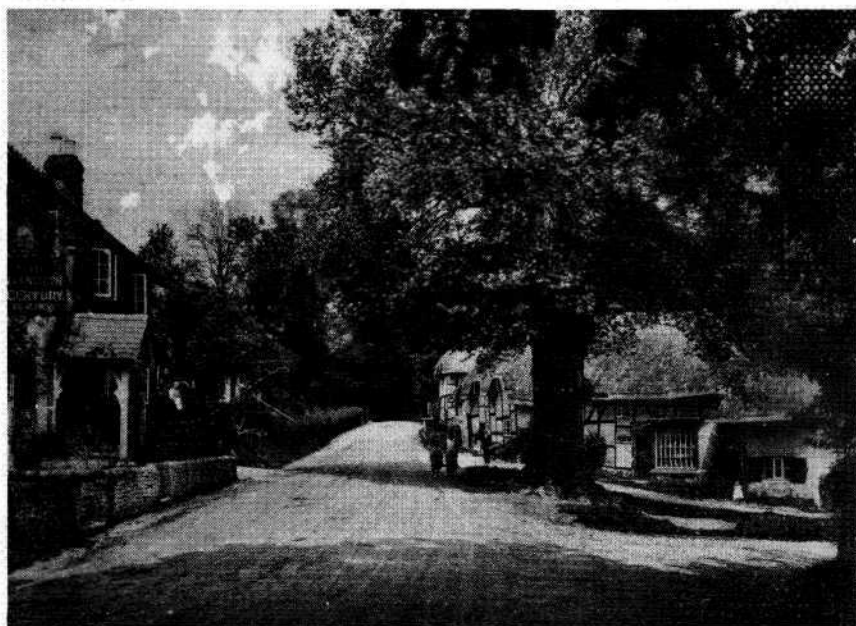


No. 0839

20p

Wherwell

Anthology VI



View of Villiage, 1913

Wherwell Playing Field Sports & Fete Programme

August 27th, 1979

Admission Free

Field Opens 1.45 p.m.



JOHN EADIE

(SPORTS & FISHING TACKLE) LTD



Expert Restring
&
Repair Service



"Your Sport is Our Business"

20 CATHERINE ST.,
SALISBURY
Salisbury 28535

5B UNION ST.,
ANDOVER
Andover 51469

*For your
shoeing
requirements,
ironwork,
etc.*

THE FARRIERY, APPLESRAW

WEYHILL 2389

A.C.R. ELECTRICAL SERVICES

UNION STREET, ANDOVER 61115



We are your Authorised

HOOVER
SERVICE CENTRE

P. C. STOKES

GREENGROCER & FRUITIER

Delivered weekly to your door

HIGHFIELD DROVE ROAD,
CHILBOLTON 403

T. J. COLLINS

NEWSAGENT

2 POUNDTREE COTTAGES
WHERWELL

Tel: Chilbolton 517



Councillor John and Grace Morgan, Mayor and Mayoress of Test Valley Borough Council.

The years '1978-1979' will undoubtedly be memorable ones for Councillor John Morgan and his wife Grace, Mayor and Mayoress of Test Valley Borough Council, who live at Dancing Ledge, Wherwell.

Their engagements have taken them all over the country — Garden Parties at Buckingham Palace, Tea Parties for pensioners etc. Yet in spite of their duties as Mayor and Mayoress their interest in 'our village' has always been given 'top priority'.

We congratulate John and Grace and hope that their second year in office will prove as exciting and as rewarding as their first year.

Simmonds Bookshop

**9 Union Street Andover Hampshire
SP10 Telephone 3012**

FACT FICTION OR FANTASY

*Whatever your choice—we have a wide selection of
titles to please.*

Any book in print available to order

BOOKS TOKENS SOLD AND EXCHANGED





THE POUND TREE

The elm on the green was always called the old pound tree but whether the pound was ever on the green is not known.

In the old days each village had its pound in which straying animals were held until their owners paid a fine and reclaimed them. If unclaimed, the animals were sold to defray expenses. In the catalogue printed when the Wherwell Estate was sold by the Ironmonger family in 1913, one of the lots includes the "Site of Pound", which is shown on the plan as being where the public telephone now stands. This can be verified on the ordnance survey map of 1871. The photograph reproduced on the front cover of our anthology this year is taken from a copy of this catalogue and it shows what the pound tree looked like then. There is, of course, no War Memorial as this was not built for another six years.

An old postcard, dated 1903, gives the impression that the elm was a very large tree then. It appears to tower behind a chestnut tree which overhangs the wall of Manor Farm House. This tree is still in evidence in the 1913 picture, though it no longer exists to-day. However on the opposite side of the road stands "Chestnut Cottage" which was named after it.

The pound tree was a favourite spot for the children of the village. Some of the branches stretched right across the road and at haymaking time, when Fred Young's loaded haycart passed beneath, the boys would climb out and stealthily drop down on top of the hay. Fred never knew how they managed to get there — so he said!

As time passed, some of the larger branches fell across the cottages and eventually the tree had to be pollarded each year. By now it was hollow and the children would climb inside and even light fires within the trunk! In 1956 it had become so dangerous that the Parish Council decided that it must be felled. There was quite a lot of opposition from the local inhabitants; it had stood there for so long and seemed an integral part of the village. It also served a useful purpose as the village notice board and a central meeting place. However, the deed had to be done and on June 13th of that year, woodmen from the Wherwell estate axed all round the base of the tree and tried to pull it over with a rope. The old tree was still sturdy enough to resist so Ted Cloud, one of the woodmen, fetched his chain saw and cut through the hollow trunk. When it was tugged over this time, one of the branches hit the War Memorial, badly damaging it, so its life did not end without incident.

There was quite a long delay in re-erecting the Memorial as the Chilmark stone originally used was very scarce. Eventually it was repaired by Page & Sons, of Andover, using most of the existing material plus some Monks Park Bath stone.

In the autumn of 1956, Mr. Vincent Reiss and his brother, Mr. Peter Reiss kindly donated a flowering cherry tree to take the place of the old elm. It has flourished and grown large, as you can see, giving a lovely display of blossom in the Spring and colourful Autumn tints.

Jeanne Nolder.





Sally Chetwyn

THOUGHTS WHERWELL 1940

I've a desperate urge to do all I can to help in the fight
to get rid of 'that man'.
I've desperate desires to put out fierce fires
Or drive a large van,
In uniform trim, with tailored shirt, instead of a jersey
An worn out skirt.
But I must stay home and try and keep sane,
With Michael and Caroline, Susan and Jane.
No call from the Palace will come for me
To receive a G.M. or an O.B.E.
Conscription for Women will pass me by
The only banners that I'll ever fly
Are a flight of white nappies
Against a blue sky!
But when the day's over, and they are tucked in their beds
Clean shiny faces, soft curly heads,
I'll sit by the fire, and at last have a rest,
I'm glad I'm still doing the job I do best.
And perhaps after all I am no Joan of Arc
For I don't like the Booms, and I can't bear the dark!

Sally Chetwyn.

"WE DIDN'T KNOW YOU WERE HERE"

So say a lot of our customers when calling on us for the first time. Our shop is not very obvious, being tucked behind Browns the jewellers near the Post Office in Bridge Street. But when you find us you will know that the range of ELECTRICAL GOODS we stock is quite something; practically everything you may need for a small repair to a complete rewire, cooker and appliance spares and many other useful 'odds and Ends'. We cater for the expert and the skilled 'Do it yourself'.

Try us first, you may save yourself a lot of time.

D. H. MITCHENER LTD., 36 Bridge Street. Tel. ANDOVER 3958.

Also, we carry out repairs and installations.

TRY US!

Nick and Selena Carter welcome
you to



The White Lion Wherwell nr. Andover

Built 1611

Real Beer on hand pumps
Bar Meals always available

Bed & Breakfast
Chilbolton 317

D. A. Rowles

HEATING & VENTILATING
ENGINEER

DOMESTIC PLUMBING

27 HIGH STREET, OVERTON

Nr. BASINGSTOKE

HANTS. RG25 3HB

TEL: BASINGSTOKE 770374

SALLY CHETWYN Wherwell nr. Andover



water colours, scraper boards, china etc.

Vauxhall

FOR YOUR

“**V**”



*MONRO'S
of
ANDOVER*

NEWBURY ROAD, ANDOVER, SP10 1DS. Telephone: 4233

Vauxhall  

Come away with Budget rent a car this Summer



TEL. ANDOVER 2696

Budget
rent a car





Sally Chetwyn

STORIES OF WHERWELL

You will all know the story and the reason for the foundation of the Abbey of Wherwell. You will know how King Edgar sent his best friend Aethelwold to ascertain if a certain young lady called Elfrida was suitable to become his queen, of how Aethelwold fell madly in love with her and married her himself, telling the King she was very unattractive and unsuitable. Of how the King became suspicious and visited the couple at Wherwell where in spite of Aethelwold's pleas Elfrida made herself as beautiful as possible, and was instrumental in arranging a hunting party in Harewood at which the King was able to kill her husband and make her his queen.

You will also know that after Edgar's death Elfrida arranged for the murder of her stepson King Edward at Corfe Castle so that her own son Ethelred should become King, and that to atone for these crimes she founded the Abbey of Wherwell and lived there in penitence for the rest of her life.

But there are other perhaps less well known stories and legends. For instance, before he had heard of Elfrida King Edgar had news of a lovely girl called Wlfhilda whose ancestor was reputed to have been found in a bird's nest by King Alfred.

Wlfhilda was placed in her infancy with the nuns at Wilton. Edgar persuaded his aunt Wenfleda to enveigle her to Wherwell under pretext of making her heiress to her property. The events after her arrival are best told in the words of the MS. of John of Tinmouth. "The girls is



ordered to her chamber to prepare herself royally, and to be brought to the King. The King made her sit down by her side, and promised her riches, a kingdom, and to become Queen and Lady of Britain if she would be united to him in marriage. But the maiden, with silent tongue yet beating heart, offered supplication to Christ, and silently prayed to be delivered. Feigning sickness, she leaves the fest for a while to rest in her chamber, as if she were weary. But the King, that she might not in any way escape, places a guard of soldiers at the door of her chamber. The maiden therefore, as if for private necessity goes whither it were disgraceful for men to follow, and having taken off her stately garments, led by an angel escapes in flight through the passage of the drain, and in the vill of Wherwell she was entertained as a beggar in the hovel of a certain very poor woman, and in the morning she comes with haste to Wilton".



Another splendid legend is that of the "Cockatrice" hatched by a toad sitting on a duck's egg. The cockatrice grew to immense size with human beings as its favourite diet. It lived in the cellars and big rewards were offered to anyone who could kill it. Many perished in the attempt but eventually a man named Greene devised a subtle trick. He held up a huge mirror in front of the creature which was so infuriated that it wore itself out trying to destroy the image. When it was exhausted Mr. Greene was able to kill it and his reward was four acres in Harewood Forest still known as Greene's acres, although I must confess that I have never found them! Villagers of Wherwell were supposed to be afraid of ducks' eggs, possibly stemming from this story.

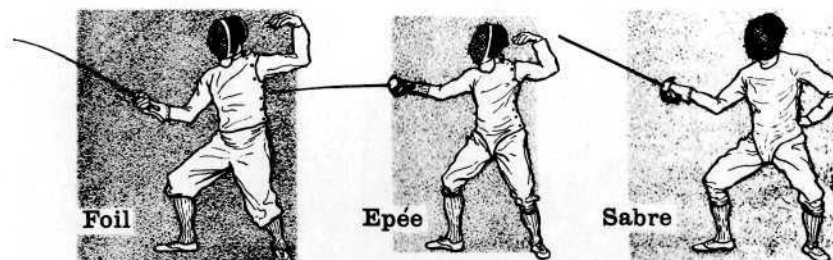
Rayn Breech

WHERWELL PLAYING FIELD

PROGRAMME OF SPORTS TO BE HELD ON THE SUMMER
BANK HOLIDAY, MONDAY AUGUST 27th, 1979

FIELD OPENS 1.45 p.m.

- | | |
|--|------|
| 1. Men, 14 and over: 100 metres | 2.00 |
| 2. Boys and Girls, 5, 6, 7: 60 metres | 2.06 |
| 3. Toddlers, 1, 2, 3, 4: 25 metres | 2.12 |
| 4. Boys and Girls, 8, 9, 10: 60 metres Sack Race | 2.18 |
| 5. Ladies 15 and over: 25 metres Egg and Spoon | 2.24 |
| 6. Super Sports Star 100 metres (on running track) | 2.30 |
| 7. Boys and Girls, 11, 12, 13, 14: 60 metres Sack Race | 2.36 |
| 8. Boys and Girls, 5, 6, 7: 60 metres Sack Race | 2.42 |
| 9. Boys and Girls, 8, 9, 10: 60 metres 3 Legged | 2.48 |
| 10. Boys and Girls, 11, 12, 13, 14: 200 metres | 2.54 |
| 11. Super Sports Star Penalty Competition (at goal near end) | 3.00 |
| 12. Men, 15 and over: Sack Race, 100 metres | 3.00 |
| 13. Ladies, 15 and over: Flower Pot Race, 25 metres | 3.06 |
| 14. Boys and Girls up to 15: Pick-a-back, 60 metres | 3.12 |
| 15. Toddlers Boys and Girls, 1, 2, 3, 4: 25 metres | 3.18 |
| 16. Boys and Girls, 5, 6, 7: 3 legged, 60 metres | 3.24 |
| 17. Super Sports Star, Running Ball (on Running Track) | 3.30 |
| 18. Boys and Girls, 8, 9, 10: 100 metres | 3.40 |



- | | |
|---|------|
| 19. Fencing Exhibition, Foil, Epée, Sabre
Andover Fencing Club | 3.45 |
| 20. Super Sports Star, Longest Throw (at goal near end) | 4.00 |
| 21. Men 15 and over: 200 metres | 4.00 |
| 22. Ladies 15 and over: Sack Race, 60 metres | 4.06 |
| 23. Boys and Girls, 5, 6, 7: Obstacle Race, 100 metres | 4.12 |
| 24. Boys and Girls, 8, 9, 10: Obstacle Race, 100 metres | 4.18 |
| 25. Boys and Girls, 11, 12, 13, 14: Obstacle Race, 100 metres | 4.24 |
| 26. Demonstration of Shire Horses | 4.30 |
| 27. Super Sports Star, Target Shooting (on running track) | 4.50 |
| 28. Men, 15 and over: Obstacle Race, 100 metres | 4.56 |
| 29. Ladies, 15 and over: Obstacle Race, 100 metres | 5.02 |
| 30. Men over 40: 100 metres | 5.08 |
| 31. Ladies over 40: 60 metres | 5.14 |
| 32. Boys and Girls up to 15: (Handicap) 100 metres | 5.20 |
| 33. Boys and Girls, 11, 12, 13, 14: 3 legged, 100 metres | 5.25 |
| 34. Super Sports Star: 1 mile, (on running track) | 5.30 |
| 35. Penalty King Finals | 5.40 |
| 36. Tug of War, Presentation of Prizes, Grand Draw | |

GRAND DRAW

Sideshows — Skittles — Tombola — Trampolines — etc.



E. Rowles, B. Ransom, R. McCulloch, D. Dooch, L. Simmonds, G. Collins,
 A. Paraman, P. Rowles, D. Smith
 M. Hewlett (Capt.), M. Fluen, I. Ransom (Mascot), P. Ayers, A. Davis,
 R. Warwick, J. Williams.

WHERWELL FOOTBALL CLUB 1978-1979

Winners of: —

The Senior League
 The President's Cup
 Five-a-Side, A League
 Five-a-Side Cup
 Five-a-Side, B League Runner's up

Andover Sunday League 'Secretary of The Year', 'Basil' Browning, (Secretary Wherwell Football Club).

The above listed achievements of Wherwell Football Club, speak for themselves! After three successful years winning promotion each season, we won the Senior League in our first year! All supporters and committee members who saw the club through the lean years, prior to our recent triumph, must now feel proud to belong to this great club.

The 'President's Cup' was a wonderful victory for us, played in front of a good crowd, with our president, Marjorie, Countess of Brecknock, watching. We started as 'underdogs' and a goal down in the first five minutes. The players were magnificent and refused to be overwhelmed. We equalised just before the 'half-time' whistle and went on to score two more goals in the second half, winning 3-1. Lady Brecknocks' pride in her team as she presented the trophies, was a joy to behold!

The Five-a-Side League has been running three years and Wherwell has won it each year. This year they added the Five-a-Side Cup and were runners up in the Five-a-Side B League — What a Season!

Special congratulations to 'Basil Browning' for winning the Andover League 'Secretary of the Year'. He has worked hard for Wherwell for many years and richly deserved this award.

My message to the players for the 1978-1980 Season — You have proved that you are good. With the same spirit and determination we will do it again.

E. ROWLES
Team Manager



Marjorie Countess of Brecknock D.B.E., President of Wherwell Football Club presents manager Mr. E. Rowles with a trophy given by his grateful team.



'Basil' Browning pictured with his 'Secretary of the Year' award.

Look at any successful organisation and one will find an efficient secretary. Basil Browning has served Wherwell Football Club for over twenty years and his great contribution to the Club has long been known. Now his dedication has been recognised by the Andover and District Sunday League in naming 'Basil', Secretary of the Year.

HUNTER STOVES

Join the heating revolution!



Burn wood &
fight rising
fuel bills

**BURNS WOOD, PEAT,
SOLID FUELS — FILL IT
AND FORGET IT.
RING, WRITE OR COME
AND SEE THEM AT:**

Carol A Poole

Distributor for:

Hunter Woodburning Stoves

Tel: CHUTE STANDEN 300

Hampshire Alternative Technology

Capture the Action at ANDOVER KAWASAKI CENTRE

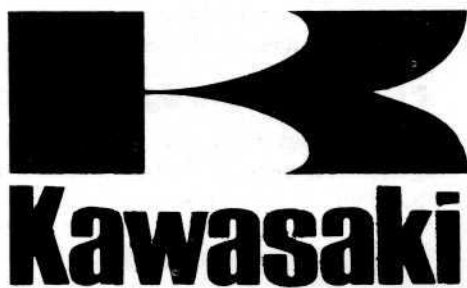
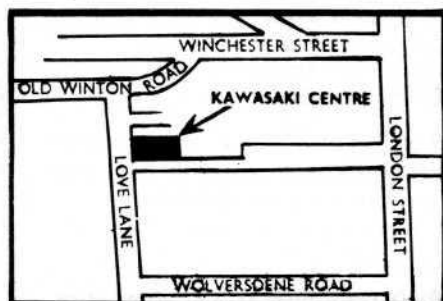
See the Full Range of KAWASAKI's
from the KH 100 to the mighty Z1300

All from 10% deposit and 36 months to pay

SUPER SUMMER SAVERS

**ANDOVER KAWASAKI CENTRE
5 LOVE LANE, ANDOVER**

Andover 54242. Open 6 days 9..00 till 5.30





THE INTERNATIONAL YEAR OF THE CHILD

The International Year of The Child has given an excuse to take a closer look at the care of children in this area. One such local survey, together with findings in other areas will be published later this year in the form of a booklet.

The project concentrated on: Hospitals, social worker, handicapped children, gingerbread group (single parent families), probation service, dealing with delinquent children. Extracts from the conclusion reached form this article.

Hospitals

Children in the age group over 0—5 years

The present facilities at Winchester Hospital are adequate but a new self-contained children's ward is under construction and a division of child health has been formed which will incorporate total paediatric care and will involve everyone concerned. Visiting times for parents are very good, in fact they can visit any time of the day or evening. There are also facilities for mothers to sleep in — two flatlets and a lodge.

Children in the age group 12-16 years

No facilities in this group. They have to go into women's or men's wards. Winchester hope to include a special unit for this age group in their new buildings. At the moment if at all possible cubicles are given to them.

Handicapped Children

There is a lack of proper counselling service, any support that is available comes from voluntary organisations.

One Parent Families

The Gingerbread Groups appear to be very independent and self-sufficient, able to take care of themselves and their children. There are over 145 families in the Andover area with two or three children over the age of six years.

Probation Service

The probation service for the delinquent child is adequate but is very under-manned. Ashbourne House, a home for delinquent boys in Winchester, does sterling work but the main trouble group is the 17 year olds. There are not enough facilities available since the 1969 Act which changed the law on many aspects of this subject. It should be stressed that the 16-17 year olds are the age group where least is done to help.

Social Work

Children's Clinics are sufficient and the community nurses are pretty good. The Health Visitors are under-staffed i.e. every 5 doctors only have one health visitor and the Andover Basingstoke area has the largest, youngest, population in Hampshire.

D.E.

AWAKE

Awake! the morning sky is the clearest crystal blue,
Follow me! see the real world is still good and true.
Through the shaded lanes and over the meadows newly green,
Where hedges of wildrose and honeysuckle with dew drops gleam.

Over the chalkdowns where tall grasses and large white daisies dance,
The still warm air and scented flowers send you into a trance.
The drowsy buzzing of the bees and heavy fragrance of newly cut hay,
Rest a while and inhale all the splendour of a summers' day.

Now stroll on towards distant woods of oak and beech so proud,
The sky now deeper blue and splashed with cotton wool cloud.
In the shade lingers yet fine gossamer web between the flowers,
The turtle dove sings his soothing notes from his hidden bowers.

Linger a while beneath elegant sweeping boughs of the beech,
Touch and caress the fresh green leaves within your reach.
Enfold your arms around the smooth sensual boughs,
With all nature and this tree form a life-long affinity now.

JEFFREY ROWLES.

LAWN MOWER AND GARDEN MACHINERY REPAIR AND OVERHAUL SERVICE

all makes and types

48 Hour Service (Subject to Parts Availability)

Quality Repairs, Service and Sales

Good Range of New Machines in Stock

The only Local Wilkinson Service Agent

Agricultural Engineers

Main Ford Dealer

WATSON AND HAIG LIMITED

MYLEN ROAD, ANDOVER

TELEPHONE: 66411

SHOE

REPAIR

SERVICE



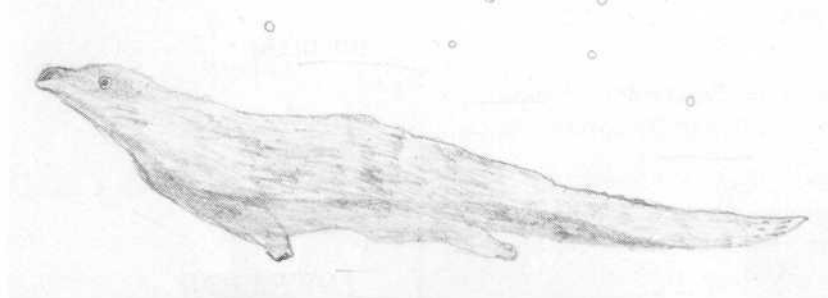
COXS



**6 UNION STREET,
ANDOVER
TEL: 3283**



WHERWELL COUNTY PRIMARY SCHOOL



AN OTTER — Dominic Anderson.

MY VILLAGE

I like living in Wherwell because it is not a built up area and it is very peaceful. I live in the White Lion and it is very old. Some of the rooms in our pub have little rooms joined on with a curtain separating it, these rooms were where in the olden days gentlemen used to powder their wigs. When we moved in to the pub we noticed that all the old beams had been covered over with wallpaper so we can't see the beams very well. Outside the pub we have an old barn that used to be an old courtroom we know this because on one wall it has painted: 'God Save the King' and on the other wall it has written on it: 'Friendship United'. We use the barn now as a garage but the swallows use it as a home because when we open the barn door about seven swallows dart in and out. We also have some stables out-side where the travellers used to keep their horses.

The Common is not very far away so I take my dog across it. The common is very beautiful with a river running through it. When it is hot I go swimmin down the Common with my friends and we have a good time.

I go to Wherwell Primary School, the school is in a very nice area because it is surrounded by grass and trees, sometimes when I am working I look up the embankment because it has a peaceful way about it.

By Lisa Fieldsend

ACKNOWLEDGEMENTS

The Wherwell Playing Field Committee wish to thank all who have contributed to 'Anthology VI'.

Marjorie, Countess of Brecknock, D.B.E.

Mrs. Jeanne Nolder

Mrs. Sally Chetwyn

Mrs. R. H. Everard

Mr. Jeffrey Rowles

Mr. D. Jenkins, B.Ed., Headmaster, and the pupils and staff of Wherwell Primary School.

Mr. E. Rowles

A special 'thank you' to the traders, who by placing their advertisements, covered the cost of printing. We sincerely hope that they benefit for giving us their kind support.

T.Y.R-H.

Wessex Pools

& MAINTENANCE LTD.

**All Types of Swimming Pools
Built to Individual Requirements**

'Suppliers' of all Swimming Pool
Accessories including : Covers,
Filtration Heating Chemicals and
Maintenance

'Agents' for the new Calorex Heat
Pumps

**OLD HILL, WHERWELL,
Nr. ANDOVER, HANTS.**

Tel. Chilbolton 278

GRAINING

SIGNWRITING

**ARTEX
CEILING**

GOLDLEAF

GLASSWORK

J. D. Raymond

***INTERIOR & EXTERIOR
DECORATOR***

**6 TOLLGATE ROAD
ANDOVER 4038**

Jean's Florist

**Flowers
for all occasions**

**Interflora Service
Delivery service in Andover
and over 100 villages**

**JEAN'S FLORIST
1B Union Street, Andover,
Hampshire SP10 1PA
Telephone: Andover 4238**

Est. 25 years

K. L. W. COOK

2 THE BROADWAY, ANDOVER

**For
HI-FI, TELEVISION,
& VIDEO RECORDERS
with full demonstration
and service facilities**

**Agents for
TECHNICS, TRIO,
YAMAHA, SONY,
MURPHY ETC.**

Phone Andover 3573

JOHN ROBINSON

High-Class Family Butcher

STOCKBRIDGE

Telephone 609

MEAT FOR YOUR DEEP FREEZE

PRIME SCOTCH BEEF

SPECIALIST DEALER IN GAME

HOME-MADE SAUSAGES
AND COOKED MEATS

ELLIOTT'S SHOES

15 CHANTRY WAY
ANDOVER

***Specialists in
Clark & Start-Rite Shoes***

Fitted by Qualified Staff

Leyanne Salon



***THE HAIR CARE &
STYLING SPECIALISTS***

***Please Ring:
STOCKBRIDGE 667***

WITH 100 YEARS EXPERIENCE IN THE TEST VALLEY



In Wherwell

HERBERTS

**Auctioneers, Surveyors,
Estate Agents & Valuers**

24 HIGH STREET, ANDOVER. TEL: 3402 (STD 0264)