

# Wherwell

25p

Anthology IX



THE POUND TREE

## Wherwell Playing Field Sports & Fete Programme

AUGUST 30th, 1982

Admission Free

Field Opens 1.45 p.m.



**WITH THE FOLLOWING FACILITIES:**

**M.O.T.  
WHILE  
YOU  
WAIT**

**EXPERT  
SERVICING  
AND  
REPAIRS**

**CHASSIS  
WELDING  
& BODY  
REPAIRS**

**Courtesy Car Service:**

We will supply you with

**A Vehicle Free of Charge**

Whilst yours is attended to!

**QUALITY CAR SALES**

**For personal service please telephone  
Barry Childs: CHILBOLTON 297**



## JEANNE MARGARET NOLDER

Regular readers will miss the interesting and informative articles of historical interest concerning the village and on local wild life, both flora and fauna, written by Mrs Jeanne Nolder. She contributed in all but the first Anthology and attempted to awaken in others, an interest in the things, about which, she cared so deeply.

Jeanne was born in Gloucester in 1912, the youngest of 3 daughters.

Her mother and eldest sister were keen naturalists and their enthusiasm was passed on to her.

Married in September 1939 she came to live in Andover and had 2 children Janice and Gillian now both married with 6 children between them.

She never liked the town life but stayed there until the children left school and in 1961 had a house built at Wherwell. This was on the railway siding where there was no soil and it all had to be imported. This gave her the opportunity to design and plant the garden as she wanted it.

In 1967 she purchased an adjoining  $\frac{1}{4}$  acre of virgin railway line mainly to preserve the large quantity of unusual wild flowers and this has been preserved as a wild area ever since.

In 1961 she was one of the local "Field Botanists" who helped compile the Atlas of British Flora published by the British Botanical Society in 1962.

In 1977 she was the "Field Correspondent" for Wherwell in the preparation of the Hampshire Treasures published in 1978 by the Hampshire County Council.

She was a keen supporter of the National Trust but her favourite was the Hampshire and I.O.W. Naturalists Trust being a member of the local committee.

Shortly before her death she undertook, for the Church Authorities, to prepare a register of all the gravestones in Wherwell churchyard. She prepared the plan and marked all the gravestones on it but had to hand over the preparation of the register to other volunteers.

In November 1979 she was told she had about 3 months to live, 6 months if she was lucky. Fortunately she responded well to treatment and this and her determination kept her alive until September 1981.

She loved Wherwell and was at least fortunate in being able to end her life looking out over the garden she had made and tended for 20 years.

Jeanne Nolders life was so full of her many interests and activities, that to try to do justice to it, in the small space available is obviously impossible. Jeanne loved life and saw the beauty and mystery of nature more readily than most. She was blessed with a wonderful husband and was well aware of this. Their deep love and respect for each other had increased during their forty years of marriage and was a joy to see.

T.Y.R-H.

---

## **A.C.R. ELECTRICAL SERVICES**

**UNION STREET, ANDOVER 61115**



We are your Authorised  
**HOOVER**  
**SERVICE CENTRE**

### **ROLAND SECURITY**

**LOCKSMITHS AND  
SUPPLIERS OF SECURITY  
EQUIPMENT**

**GEORGE YARD, HIGH STREET,  
ANDOVER 57476**

**ALL TYPES OF LOCKS  
AND KEYS SUPPLIED**

**CHUBB SERVICE  
AGENTS**

**MASTER KEY  
SYSTEMS**

**BURGLAR ALARMS**

**ENTRIES MADE  
WHEN KEYS ARE  
LOST**

## OUR SUNDAY SCHOOL

We have 45 members in our Sunday School and we meet every Sunday in the Village Hall at 10.30 a.m. As we suffer a staff shortage, all children over eight are taught by Mr. John Morgan and the rest by myself. We do not have a musician among us and so we sing our choruses unaccompanied; everyone joining in the actions which go with them.

Our social activities include a games evening each week, held at Dancing Ledge for all members over 7 years. These children are also taken on a camping weekend in April and September, which means about 21 children and 5 adults in one house!!!

All children take part in a Nativity Play at Christmas, which means a host of angels and a flock of shepherds. We usually choose the coldest night in the year to go carol singing, the proceeds going to the National Childrens Home.

Salisbury Playhouse has one performance **DISTURBED** each year when we visit them for our winter outing.

Our summer activities are swimming, tennis and a trip to the seaside. We are fully self supporting from our jumble sale and discos which are held the third Tuesday of each month.

The Sunday School also raise money for the Church by selling ices, drinks and lucky dips at the Fete.

Our new venture is a 13+ group held every other Monday at my flat.

Phyllis Daubeny

Christmas Nativity Play



# ANDOVER KAWASAKI CENTRE

NEW AND SECOND HAND MACHINES IN STOCK

REPAIRS — SERVICES — SPARES

LOW INSURANCE QUOTES ON KAWASAKIS

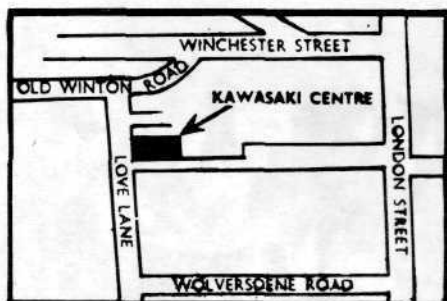
FULL RANGE OF HELMETS

CLOTHING AND ACCESSORIES

FINANCE FROM NO DEPOSIT  
ON ANY MOTORCYCLES

**M.O.T.**

*OPEN 7 DAYS A WEEK \*\*\* ANY MAKE SUPPLIED*



**at 5 LOVE LANE  
ANDOVER 54242**

# **K.W. BUTCHER**

**LTD. (Anna Valley)**

Building Contractors  
Plumbing and Heating

**SPECIALISTS IN  
COTTAGE CONVERSIONS**

**Andover 61391**

**GRAINING**

**SIGNWRITING**

**ARTEX  
CEILING**

**GOLDLEAF**

**GLASSWORK**

## **J. D. Raymond**

*INTERIOR & EXTERIOR  
DECORATOR*

**6 TOLLGATE ROAD  
ANDOVER 4038**

## **Jean's Florist**

— • —  
**Flowers  
for all occasions**  
— • —

**Interflora Service**  
Delivery service in Andover  
and over 100 villages  
Access & Barclaycard Welcome

**JEAN'S FLORIST**  
1A Union Street, Andover,  
Hampshire SP10 1PA  
Telephone: Andover 4238

EST. OVER 25 YEARS

## **K. L. W. COOK**

**2 THE BROADWAY  
ANDOVER**

For  
**HI-FI, TELEVISION,  
& VIDEO RECORDERS**  
with full demonstration  
and service facilities

Agents for  
**TECHNICS, TRIO,  
YAMAHA, PANASONIC ETC.**

**Phone: ANDOVER 3573**



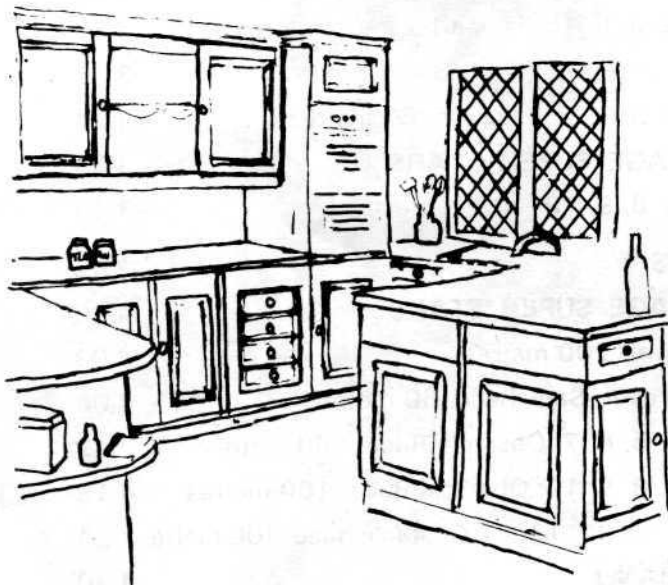
**PROGRAMME OF SPORTS TO BE HELD ON THE SUMMER  
BANK HOLIDAY, MONDAY,**

**Field Opens 1.45 p.m.**

1. Men, 14 and over: 100 metres	2.00	1
2. Boys and Girls, 5, 6, 7: 60 metres	2.06	2
3. Toddlers, 1, 2, 3, 4: 25 metres	2.12	1
4. Boys and Girls, 8, 9, 10: 60 metres Sack Race	2.18	2
5. Ladies 15 and over: 25 metres Egg and Spoon	2.24	1
6. <b>INTER VILLAGE SUPER STARS</b>	2.30	
7. Boys and Girls, 11, 12, 13, 14: 60 metres Sack Race	2.36	2
8. Boys and Girls, 5, 6, 7: 60 metres Sack Race	2.42	2
9. Boys and Girls, 8, 9 10: 60 metres 3 Legged	2.48	2
10. Boys and Girls, 11, 12, 13, 14: 200 metres	2.54	2
11. <b>INTER VILLAGE SUPER STARS</b>	3.00	



# Old Pine, Teak, Oak & Mahogany



KITCHENS

\*

BATHROOMS

\*

BEDROOM  
WARDROBES

**ALL INDIVIDUALLY DESIGNED AND CUSTOM MADE BY  
LOCAL CRAFTSMEN FROM GENUINE OLD WOOD.**

We offer friendly advice on the use of old architectural items which will enhance your home. We supply old **FIRE PLACES, DOORS, BRASS WALL, TABLE & HANGING LAMPS** plus many other architectural by-gones.

We specialise in all kinds of stripped pine furniture and have a selection of antiques in other woods.

**COME AND SEE ONE OF THE LARGEST SELECTIONS OF PINE  
FURNITURE AND ARCHITECTURAL ITEMS IN HAMPSHIRE.**



NICK OR TONI HAMMICK ON LONGPARISH 440  
or GRATELEY 661 after 15th OCTOBER

**VISIT OUR NEW SHOWROOMS AT QUARELY MANOR FARM  
AFTER 15th OCTOBER**

\*\*\*\*\* PINE STRIPPING SERVICE AVAILABLE \*\*\*\*\*

12. Men, 15 and over: Sack Race, 100 metres	3.03
13. Ladies, 15 and over: Flower Pot Race, 25 metres	3.06
14. Boys and Girls up to 15: Pick-a-back, 60 metres	3.12
15. Toddlers Boys and Girls, 1, 2, 3, 4: 25 metres	3.18
16. Boys and Girls, 5, 6, 7: 3 legged, 60 metres	3.24
17. <b>INTER VILLAGE SUPER STARS</b>	3.30
18. Boys and Girls, 8, 9, 10: 100 metres	3.40
19. <b>MAJORETTES</b>	3.45
20. <b>INTER VILLAGE SUPER STARS</b>	4.00
21. Men 15 and over: 200 metres	4.03
22. Ladies 15 and over: Sack Race, 60 metres	4.06
23. Boys and Girls, 5, 6, 7: Obstacle Race, 100 metres	4.12
24. Boys and Girls, 8, 9, 10: Obstacle Race, 100 metres	4.18
25. Boys and Girls, 11, 12, 13, 14: Obstacle Race, 100 metres	4.24
26. <b>MARCHING BAND</b>	4.30

---

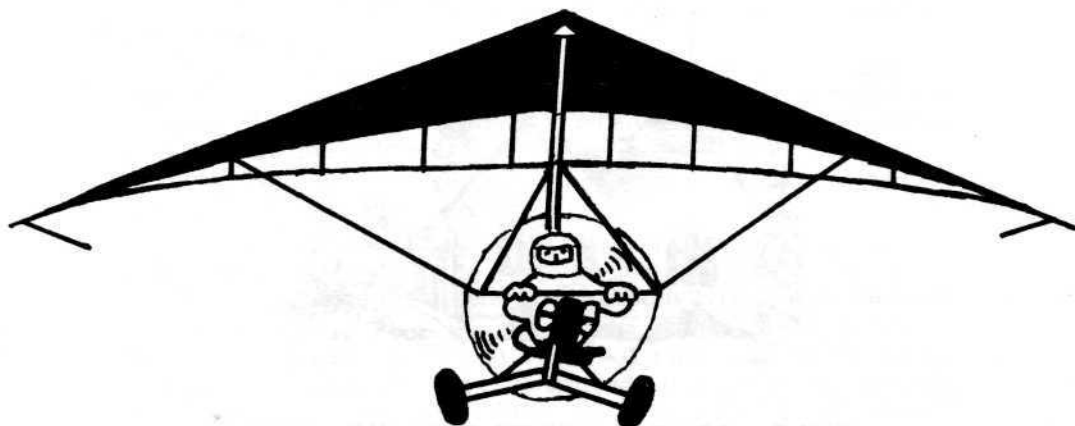


**SOLAR WINGS LTD.**

[hang glider manufacturers & design specialists]

KATHERINE HOUSE YARD,  
KENNET PLACE, MARLBOROUGH,  
WILTSHIRE, SN8 1NG.  
TEL.(0672)54414.

---



### **MICROLIGHT, GLIDER DISPLAY DURING AFTERNOON**

27. <b>INTER VILLAGE SUPER STARS</b>	4.40
28. Men, 15 and over: Obstacle Race, 100 metres	4.56
29. Ladies, 15 and over: Obstacle Race, 100 metres	5.02
30. Men over 40: 100 metres	5.08
31. Ladies over 40: 60 metres	5.14
32. Boys and Girls up to 15: (Handicap) 100 metres	5.20
33. Boys and Girls, 11, 12, 13, 14: 3 legged, 100 metres	5.25
34. <b>INTER VILLAGE SUPER STARS</b>	5.30
35. <b>TUG OF WAR. Chilbolton-v-Wherwell</b>	5.40

**GLIDER TAKE OFF WEATHER PERMITTING**

**GRAND DRAW**



### THE CHURCH OF ST. PETER AND HOLY CROSS

Without extensive research the history of the Church of St. Peter and Holy Cross, Wherwell, is difficult to trace, accurately, beyond the Reformation.

The present building is relatively modern, being built on the site of the Old Church by a Mr. Holdway in 1856.

The original Church could quite easily be the one built by the Abbess Euphemia. In the Victorian History of Hampshire it states that an Abbess Euphemia built a chapel outside the cloisters, beyond the farmery, as a place of worship for both nuns and the villagers. In another reference it says that the Church was built in the thirteenth century.

As Euphemia was Abbess from 1226 A.D. it would seem logical to suppose that this was the original Church.

In the present Church there is a stone effigy, which represents an Abbess, of supposedly 15th century origin and it would be difficult to establish which Abbess the figure commemorates without diligent investigation.

Of the Abbesses of Wherwell, Abbess Euphemia was the most entitled to fame.

The font is said to have been dug up from the river bank.

There is a detailed description of the font in the Victorian Hampshire series. However, its present beautiful condition makes the origin and age doubtful.

The Abbey, fortunately, has an extremely well documented history, which is proof in itself of the important role that it played in the affairs of the country.

Several Kings and Queens were involved with the Abbey in one way or another. Some used it as a place of refuge, while others were kept there in undeserved state of retirement or semi-disgrace.

It was far from being a peaceful abode for religious contemplation.

During the Civil War in 1141 A.D. between King Stephen and his cousin, Empress Matilda, Matilda's men defended the crossing of the Test at Wherwell. When the tide of battle turned against them the soldiers took shelter in the Abbey.

The Holy Sanctity of the Abbey was ignored, the soldiers slain and the Abbey put to the torch.

The terrified nuns were driven out, shrieking, and had to find shelter wherever they could. Fortunately the Abbey was saved and continued to be the centre of all activity for miles around.

In Domesday Book the Abbey was said to hold Wherwell, Tufton, Goodworth (Clatford), Anne (Little), Middleton (Long-parish), Bullandum (Bullington), and had interest as far away as Winchester in Flesmanger's Stret (St. Peter's Street), Scowiten's Stret (Jewery Street), Colwern Street (Parchment Street).

When we look back on the picture with the Abbess controlling this large area we can perhaps imagine the great loss felt by the community when, on the 21st November, 1540 A.D., King Henry closed Wherwell Abbey after his quarrel with the Pope.

The Abbey was ransacked of all its treasures and considerable wealth.

The last Abbess was Morphuet Kyngesmill, cousin of the Dean of St. Swithin's. Her brother, Sir John Kyngesmill, was one Commissioner for the Dissolution and used his influence to see that the Abbess and her incumbents were treated as fairly as the troubled times allowed.

The Abbess and her nuns were assigned pensions.

*In comparisons to current trends throughout the country with many churches reporting diminishing congregations, the present vicar, the Rev. Christopher Hubbard, who serves both Parishes of Wherwell and Chilbolton, has a vigorous following from all walks of life.*



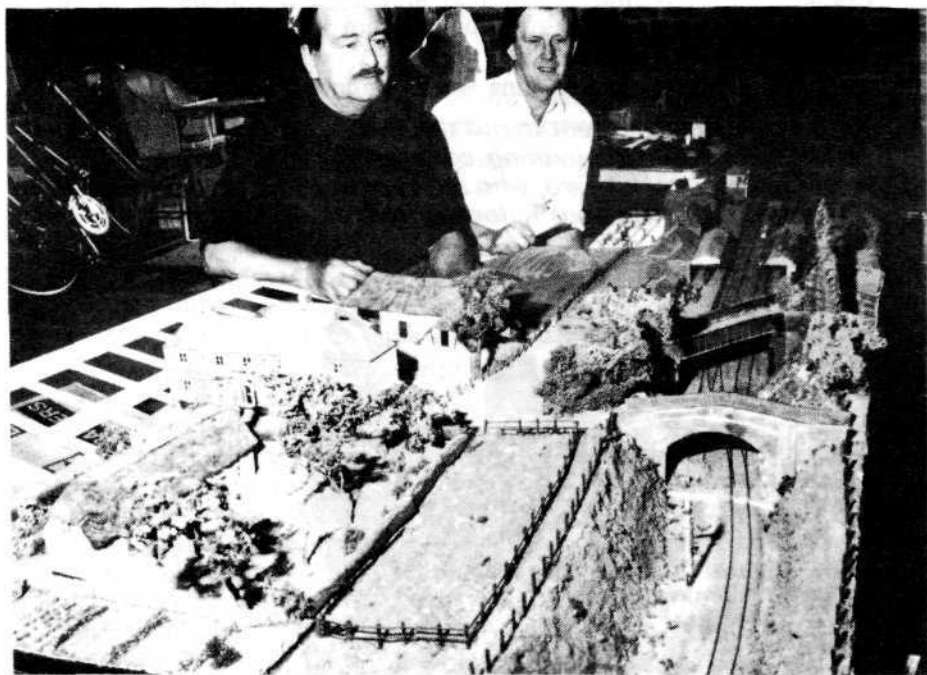
## WHERWELL MODEL RAILWAY 1910

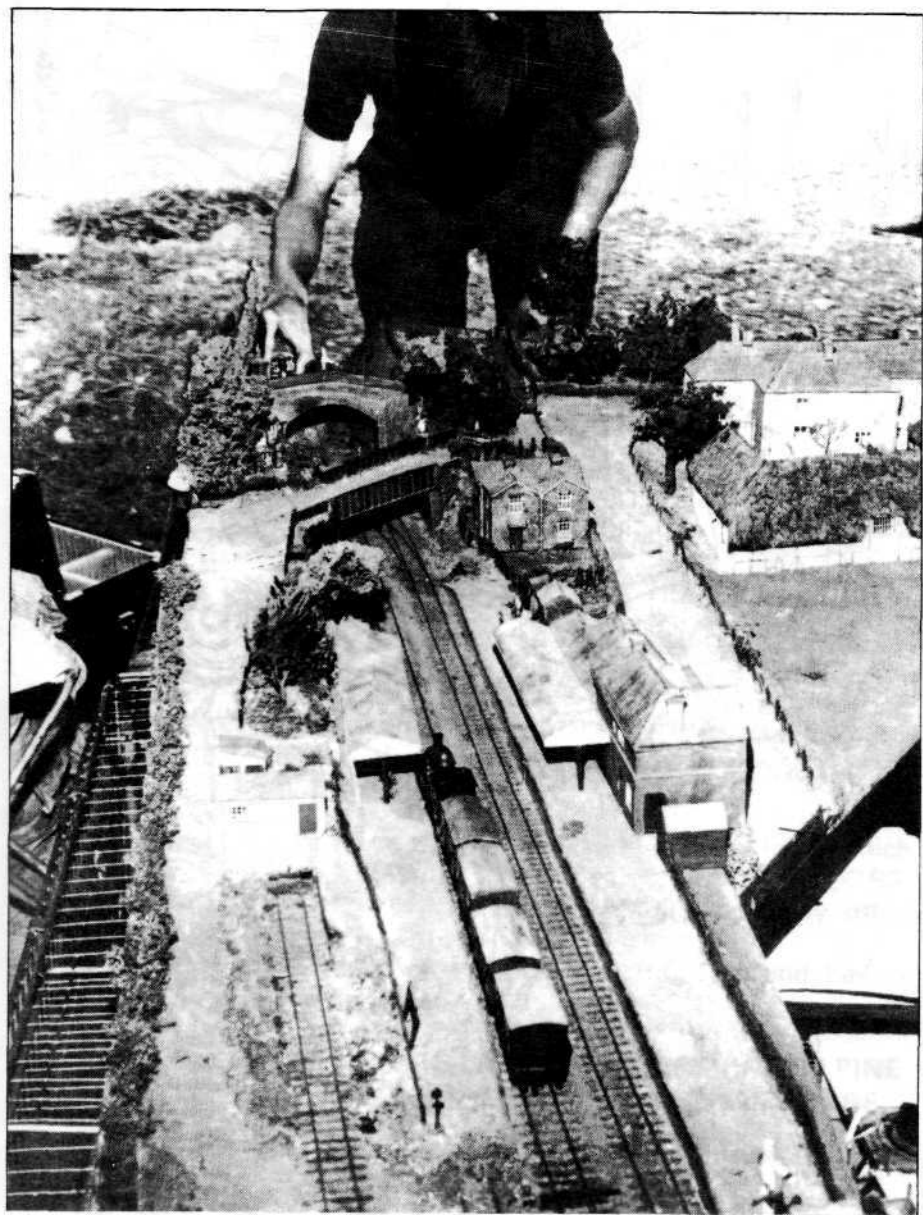
The model of Wherwell Station, as it was in 1910, has finally found its way back home. It was commenced in Micheldever, Hampshire, by Mr. John Hobson, a dedicated model railway enthusiast, who moved to Yorkshire and completed the model some ten years later, taking over 9,000 working hours.

I was made aware that the model existed in 1979, when it was illustrated in over eight pages of the Model Railway Magazine. Due to the combined efforts of Mr. David Morgan, of Winchester Major Michael Fauvelle and the Wherwell Playing Field Committee, who have purchased the model from Mr. Morgan, it has returned to Wherwell. The proceeds are going to a charity for handicapped children.

The Committee felt that the model was important, historically, to the village, and bought it to secure its long term future. The problem now is to find a place where it can be kept safely for the public to view.

**YOU HAVE THE OPPORTUNITY TO VIEW THE MODEL OF OLD WHERWELL STATION AT THE FETE AND A FUND IS OPEN FOR DONATIONS WHICH WILL BE MOST GRATEFULLY RECEIVED.**









Sally Chetwyn.



## THE BACKWARD LOOK

There were roses in their garden in sixty two or three  
"You're on the plan, the line goes here  
There's no appeal, you see"  
They arrived with all their armour  
And levelled every tree  
For trenches to take the water  
From here to Eternity.  
Long established roses, herbaceous borders too,  
Gone, to clear the way for  
A bigger and better loo.  
"They'll grow again" they shouted  
"In a year or two, or four,  
"You'll never know the difference  
"Same as it was before"  
But we cry for 'Ena Harkness'  
For 'Frau Carl Druschi' too,  
But they're in the path of progress  
There is nothing we can do"  
No privies down the garden now,  
No water butts of rain,  
No buckets from the river,  
HOORAY! WE'RE ON THE MAIN!  
And down the road they're planning now  
TO take away our train!

*Sally Chetwyn*

***D. A. Rowles***

**HEATING & VENTILATING  
ENGINEER**

**DOMESTIC PLUMBING**

**27 HIGH STREET, OVERTON**

**Nr. BASINGSTOKE**

**HANTS. RG25 3HB**

**TEL: BASINGSTOKE 770374**

**SALLY CHETWYN** Wherwell nr. Andover



water colours, scraper boards, china etc.

**Chilbolton 592**



# JOHN EADIE

(SPORTS & FISHING TACKLE) LTD



Expert Restring  
&  
Repair Service



*"Your Sport is Our Business"*

5B UNION STREET  
ANDOVER

Andover 51469

20 CATHERINE ST., 22 THE SQUARE  
SALISBURY WINCHESTER

Salisbury 28535

Winchester 64188

# SYCAMORE PRESS



LETTERHEADS / BILLHEADS

CIRCULARS / HANDBILLS

PROGRAMMES

VERY COMPETITIVE RATES

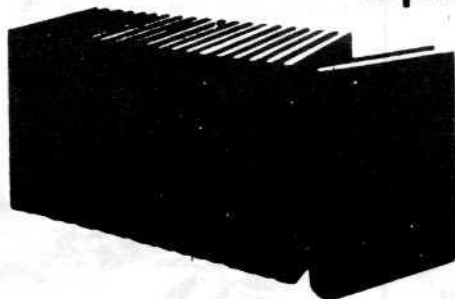


CHILBOLTON 380

## WHERWELL PLAYING FIELD COMMITTEE

Promoter: Mr. T.Y.R. Hutton,  
Manor Farm, Wherwell

## Sports Day Fete ★ Star Prize



CHILDREN'S  
BRITANNICA  
20 VOLUMES  
6,576 PAGES

OVERALL  
DIMENSIONS  
450 x 254 x 190mm

Draw will take place at the Fete.

TICKETS  
10p EACH

# JOHN ROBINSON

High-Class Family Butcher

**STOCKBRIDGE**

**Telephone 609**

---

**MEAT FOR YOUR DEEP FREEZE**

**PRIME SCOTCH BEEF**

**SPECIALIST DEALER IN GAME**

**HOME-MADE SAUSAGES  
AND COOKED MEATS**

---



**BUY  
YOUR MOWER  
WHERE YOU  
CAN OBTAIN  
SERVICE**

**MOWERS  
WEEDEATERS  
CULTIVATORS  
CHAINSAWS  
RIDE-ON MOWERS  
HEDGE-CUTTERS**

**SPECIALIST SALES/REPAIR DEALERS FOR: MOUNTFIELD—HONDA—HAYTER—FLYMO  
WESTWOOD—DANARM—STIHL—HOMELITE—QUALCAST  
MORRISON—ATCO—SUFFOLK**

**WATSON & HAIG LTD.,  
MYLEN ROAD, ANDOVER**

**Tel: (0264) 66411 (10 Lines)**

**OPEN WEEKDAYS & SATURDAY MORNINGS  
FREE PARKING FACILITIES  
DON'T DELAY—CALL IN TODAY**

**A WIDE  
CHOICE OF  
WELL KNOWN  
MAKES!**



## BRECKNOCK SPORTS AREA – TENNIS

In order to make the best possible use of our new tennis courts it was suggested that a tournament might be started. This was mainly to encourage the young. Thirteen boys and girls between the ages of 9 and 17 entered a handicap mixed singles event. This event is now in progress and it is hoped to be completed before the Fete on August 30th, so that prizes may be presented at the Fete.

Later something similar will be arranged for the over 18's. In time, if the necessary enthusiasm can be generated, we might attempt to form a mixed team to challenge villages and clubs in the area.

Any suggestions from players anxious to help should be passed on to Kenneth Wilson, 'CRANHAM' FULLERTON ROAD, WHERWELL. Telephone – Chilbolton 479.

---

## BRECKNOCK SPORTS AREA

### Floodlit All-Weather Surface



FOR BOOKINGS PLEASE CONTACT:

Mr. E. Rowles, 7, Beech Grove, Wherwell.  
Telephone: Chilbolton 632



#### FIVE –A–SIDE FOOTBALL

*Basic Rate.* . . . . . £1.00 per Hour

*With—:*

*Floodlights* . . . . . £1.50 per Hour

*Showers* . . . . . £1.50 per Hour

*Floodlights & Showers* . . . . . £2.00 per Hour

#### TENNIS

*Basic Rate* . . . . . £0.60 per Hour

---

## WHERWELL FOOTBALL CLUB

Members of Wherwell Football Club were deeply distressed by the tragic death of Ian Purver, who died on August 10th 1981.

Ian joined the club after leaving school as a player and later became a committee member. For three years he was an enthusiastic boy club manager.

Always a keen fund raiser himself, it is fitting that even after his death, money is still being raised in his name, for the Dulwich Kidney Research. Ian died because his kidney transplant failed. So far the Wherwell Football Club has raised £1,200 and the fund is still open for donations. It is hoped that this will help towards the fight against this disease.

The club also donated the 'Ian Purver Memorial Trophy' for 'Clubman of the Year'. The honour of winning the award for the first time went to Jim Hawkins.

### **The Player's Players this year: —**

First Team: Lawrie Simmonds, who has played for six years with the club.

Second Team: young David Austin, only 16 and in his first season.

## FIVE-A-SIDE FOOTBALL

For the first time since this competition started Wherwell did not win any of its matches, losing to Wallop in the final.

Wherwell was also in the finals of the open cup, losing this time to Abbots Anne.

It is hoped that this season Wherwell will return to their 'winning way'!

E. Rowles.

---

## **P. C. STOKES**

**GREENGROCER & FRUITER**

*Delivered weekly to your door*

**HIGHFIELD DROVE ROAD,  
CHILBOLTON 403**

## **WHERWELL FOOTBALL CLUB**

Sponsored by:

**KEN BULPITT CLEANING  
SERVICES**

**Tel: Andover 3898**

---

## A QUIET PLACE

In the first golden rays of the rising sun as they fall upon the stair,  
Among the lovely flowers of the garden and by the old stone wall,  
you are there.

In the sloping fields with trickling streams and spilling wild rose,  
On craggy cliffs with trees of every shade of green,  
you are there.

In the bluest sky among whitest cottonwool clouds drifting by,  
Where the wild haunting cry of the wheeling buzzard is heard,  
you are there.

Among the radiant orange glow and the deepest green of the wild rowan,  
In the shady glens of the quiet forest where deer sip from mirrored pools,  
you are there.

On the high, purple heather covered hills where white quartz stone glows,  
Where the wind blows wild and squalls with driving rain,  
you are there.

Where the silver moon climbs over the distant mountain accompanied by a  
lone star

In the crackling of the home hearth fire with its comforting glow,  
you are there.

In a lovely haunting melody once heard and never forgotten,  
In my nightly dreams, your lovely smile is there to comfort me

Jeffrey Rowles.

---

# Simmonds Bookshop

**9 Union Street Andover Hampshire  
SP10 Telephone 3012**

---

### FACT FICTION OR FANTASY

*Whatever your choice—we have a wide selection of  
titles to please.*

*Any book in print available to order*

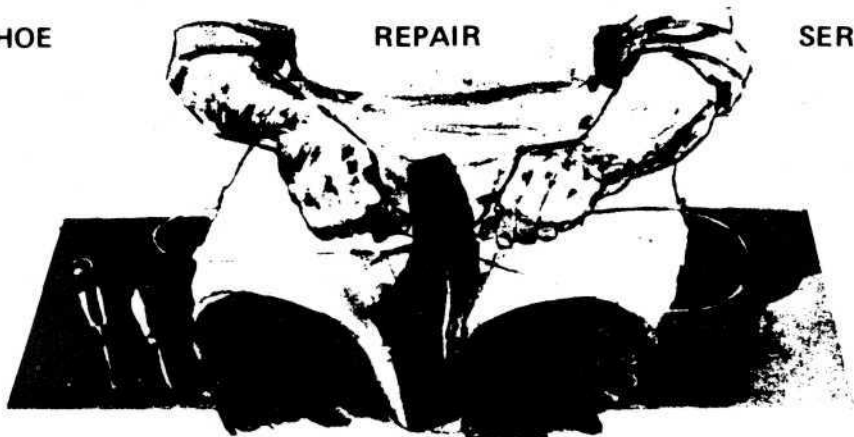
**BOOKS TOKENS SOLD AND EXCHANGED**



SHOE

REPAIR

SERVICE



**COXS**

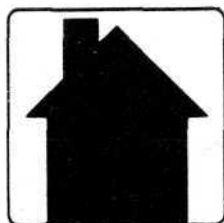
6 UNION STREET,  
ANDOVER  
TEL: 3283



Flair with  
Hair

For your next  
appointment please ring  
**STOCKBRIDGE 667**





# **HERBERTS & HOUGHTON**



**ESTATE AGENTS, AUCTIONEERS, SURVEYORS, VALUERS**



## **In Wherwell**

RESIDENTIAL AND COMMERCIAL PROPERTY SALES, FORTNIGHTLY FURNITURE/CHATELLETS  
AUCTIONS, FURNITURE VALUATIONS, FROM:

**41 LONDON STREET, ANDOVER**

**Telephone Andover 3402/3 or 64820**

RESIDENTIAL PROPERTY SALES, STRUCTURAL SURVEYS, BUILDING SOCIETY VALUATIONS,  
VALUATIONS FOR ALL PURPOSES INCLUDING: PROBATE, RATING, INSURANCE, RENT REVIEWS,  
COMPULSORY PURCHASE & COMPENSATION AND TAXATION, FROM:

**77 HIGH STREET, ANDOVER**

**Telephone Andover 3402/3 or 54155**

Local Agents for the Cheltenham & Gloucester Building Society