

# Chilbolton and Wherwell Community Magazine

As some of you may know, I come from the north of England, but have lived in Hampshire now for 25 years and I haven't lived in Lancashire since 1977. For those of you who know me well, you will realise that 'you can take the girl out of Lancashire, but you can't take Lancashire out of the girl' – for one thing, my accent is still going strong!

I have a number of things I am superstitious about – eg: no shoes on the table; no umbrellas up in the house; don't pass another person coming towards you on the stairs; if you spill salt through some over your left shoulder. My husband thinks it's my 'northern-ness' – which is an interesting thought. Is it? Or do any of you have similar things you feel uncomfortable about? It would be interesting to hear your thoughts.....

*Hilary Jennison*

Thank you to Tessa Youell and Hilary Jennison who produced this month's magazine, to Ed Treadwell for printing and Mike Keys and helpers for collation and distribution.

# Church Matters

## The Downs Benefice

The Revd Juliet Montague, BTh (normal day off: Monday)

Curate: The Rev'd Stuart Rason, The Rectory, Chilbolton Tel: 860258

**Benefice Administrators:** Vanessa Denham & Maggie Hobbs

---

### From the Parish Registers:

Chilbolton		
Baptism	16 May	Oliver Joseph Channell
	29 May	Charlotte Sophie Hall
		Francesca Faith Hall
	19 June	Polly Cooper
Wherwell		
Wedding	29 May	David John Clarke and Alexandra Rae Lawton-Bryant

**Church Services July 2010**

	St Mary the Less Chilbolton	St Mary's Crawley	St Catherine's Littleton	St Stephen's Sparsholt	St Peter & Holy Cross Wherwell
<b>Saturday 3<sup>rd</sup> July</b>					
House Communion			10.00 am		
<b>Sunday 4<sup>th</sup> July The Fifth Sunday after Trinity</b>					
Holy Communion	8.00 am		8.00 am		
Benefice Family Communion to celebrate Jennifer Brown's Priesting		10.00 am			
Evensong	6.00 pm				
Service of Peace & Heal			6.00 pm		
<b>Wednesday 7<sup>th</sup> July</b>					
Holy Communion			9.30 am		
Westholme Service			2.30 pm		
<b>Sunday 11<sup>th</sup> July The Sixth Sunday after Trinity</b>					
Holy Communion				8.00 am	
Family Communion Sunday school at Crawley		10.00 am	10.00 am		
Morning Prayer	10.00 am				
Welcome Worship				10.00 am	
Evensong					6.00 pm
<b>Wednesday 14<sup>th</sup> July</b>					
Holy Communion			9.30am		
<b>Thursday 15<sup>th</sup> July</b>					
Flowerdown			2.30pm		
<b>Sunday 18<sup>th</sup> July The Seventh Sunday after Trinity</b>					
Holy Communion		8.00 am			
Family Communion			10.00 am		
Family Service					10.00 am
CW Holy Communion	10.00 am				
Matins				10.00 am	
Benefice Evensong			6.00 pm		
<b>Wednesday 21<sup>st</sup> July</b>					
Holy Communion	10.30 am		9.30 am		
<b>Sunday 25<sup>th</sup> July James the Apostle</b>					
Holy Communion					8.00 am
Family Service	10.00 am				
Family Communion			10.00 am	10.00 am	
4 <sup>th</sup> Sunday Worship with Sunday School		10.00 am			
<b>Wednesday 28<sup>th</sup> July</b>					
Holy Communion			9.30 am		
Meditation			7.00 pm		

## Chilbolton Church – Churchyard and Summer Walks

Many of you will have noticed the difference to the view of the church as you enter Village Street at Stocks Green which has resulted from the felling of a very large conifer. This tree, a Lawson Cypress, was in fact mostly regenerated growth coming from the original trunk which had broken off in the past. A large limb recently split away, fortunately not towards the roadway or Church Farm House, and on inspection by an arboriculturalist the tree was deemed to be unsafe. It is thought that it was planted in the late 1890's at the time of the extensive building work on the church funded in the main by the Silva family. Another point of interest is that the tree was planted where the house of the village school's headmaster once stood. Some of you will be sad to see such a large tree gone whilst to some it will be an improvement. The Parochial Church Council is to liaise with TVBC over the type of tree to be planted in its place.

We would also like to mention that the Benefice has a programme of summer walks (see next article for details); Monday 16<sup>th</sup> August to Sunday 22<sup>nd</sup> August, for all five communities – Chilbolton, Wherwell, Crawley, Sparsholt, Littleton, and everyone will be welcomed. There will be six full length walks of circa 10 miles and also seven half-day walks of circa 5 miles. Bring your own picnic lunches. There is a literary theme to each walk which will pass by a building that is linked to a "literary giant." We are exploring the areas of Minstead, Freshwater Down I. o W., Chawton, Watership Down, Selborne and Twyford. Transport will be arranged to get you there and back.

In addition we will visit pubs in and around the villages on four evenings for an evening meal; the week will finish with a BBQ on Sunday 22<sup>nd</sup> August for all walkers and helpers at Eryl and Clive Thompsett's home in Littleton. In 2008 there were over 110 walkers most of whom did 2 walks on average. We are hoping again for good numbers and it is a great opportunity to socialise and see wonderful countryside linked to Conan Doyle, Tennyson, Jane Austin, Richard Adams, Gilbert White, Keats and Trollope. Details of each walk and forms for letting us know which walks you want to do are at the back of each church or you can contact either of us.

*Jane Spence and Lawrence Wild  
Churchwardens, St Mary the Less*

## SUMMER WALKS - 16<sup>th</sup> to 22<sup>nd</sup> August 2010

There will be a week of walks again this summer and we plan six circular (not linear) walks; this will help with the logistics of having cars in the right place. It is for the whole communities of Chilbolton, Crawley, Littleton, Sparsholt and Wherwell. **All are welcome.**

There will be full length walks of circa ten miles and also half-day walks of circa 5 miles. We are loosely linking each walk to a 'literary giant' and each walk will pass by a building(s) or through a landscape that is linked to the author. **BYO picnic lunch.** The six areas will be:

August	Area	Literary Link	Walk	Distance
Mon 16 <sup>th</sup>	Minstead, New Forest.	Conan Doyle	Full day Half day (p.m.)	11 miles 5 miles
Tues 17 <sup>th</sup>	Isle of Wight	Tennyson	Full day	11 to 12 miles (Tide dependent)
Wed 18 <sup>th</sup>	Chawton	Jane Austen	Full day Half day (p.m.)	10 miles 4 miles
Thurs 19 <sup>th</sup>	Watership Down	Richard Adams	Half day (a.m.) Full day	5 miles 10.8 miles
Fri 20 <sup>th</sup>	Selborne	Gilbert White	Half day (a.m.) Full day Half day (p.m.)	5.3 miles 10.3 miles 5 miles
Sat 21 <sup>st</sup>	Winchester Water Meadows & Twyford	Keats and Trollope	Half day (a.m.) Full day Half day (p.m.)	5 miles 9.5 miles 4.5 miles

In addition we will visit pubs in and around the benefice on four evenings for an evening meal. The week will finish with a BBQ on Sunday 22<sup>nd</sup> August for all walkers and helpers at Eryl and Clive Thompsett's home in Littleton. Last year we had over 110 walkers who each walked on average 2.2 walks. It is hoped that all five communities will support this initiative; it will be great to meet you.

Forms for letting us know which walks you want to do will be in each church, village shop (where practical) and pub from the end of May.

*Eryl & Clive Thompsett*

# Simply Sunday

**Wherwell Tea** Every 2<sup>nd</sup> Sunday 4 – 5.30 pm

Instead of our usual venue of Wherwell village hall, we thought it would be good to be out enjoying the summer.



**11<sup>th</sup> July Biking and Tea**

Meet at 4pm Chilbolton Village Hall –  
various rides suitable for all ages.

**Chilbolton Rectory Breakfast**

Every 4<sup>th</sup> Sunday from 8.45am  
25<sup>th</sup> July



We welcome families to come for a relaxed and informal breakfast at the Rectory followed by a family service at 10am at St Mary the Less, Chilbolton.

Simply Sunday is organised and funded by and for the people of The Downs Benefice enabling the events to be free of charge. If you would like any further information, please contact The Rev'd Stuart Rason, Tel 860258 or Gaynor and Max Childs, Tel 860044



## Collection Week 2010

The door to door collection for Red Cross Week in Chilbolton raised a total of £370.32p this year. Many thanks to the volunteer collectors and to all who contributed. The total raised in the Andover area was £5,650.09; slightly down from last year.

*Linda Taylor*

# Chilbolton Players



Present



## The Chalice

an original whodunnit

**Thursday 8th July - "The Picnic Edition"**

at 7:30pm, guests to bring their own meal and drinks

Tickets: £6

**Friday 9th and Saturday 10th July**

at 7:30pm (*licensed bar from 7:00*)

Tickets: £12.50

including 3 course dinner

Tickets available from the box office:

Richard Richardson,  
Digby Croft Cottage, Winchester Street, Chilbolton  
**01264 861082**

or The Chilbolton Village Stores & PO  
from 1st June

# Chilbolton Parish Council

The Parish Council met on Tuesday 1 June. The main topic was access to the Common, a problem fresh in everyone's mind since the weekend of troubles. This has been a perennial problem and your Council will make a determined effort to solve it. There are two facets to the problem: access to the Common itself, and the loutish behaviour of some inconsiderate people which is destroying the quality of life for the majority. Elsewhere in this magazine you will find a notice of a meeting to be called in September when the Council will be able to present to the community its plans to tackle both.

In the meantime, the problem has attracted the attention of the Police who intend to take a higher profile throughout the summer. Remember the number to ring is 101 so that the Police can build up a dossier.

The Play Area also attracted a lot of discussion. The three proposed solutions to the question of playground equipment were considered and two were eliminated. The Equipment Team will now discuss how the main proposal can be improved so that we can present to the village an agreeable proposal.

Cllr Gossling is seeking volunteers to support his four working groups. These will give impetus to the Council plan and are intended to identify projects which will enhance the village environment and residents' well-being. He will produce an article for the magazine to explain what is afoot, but he will be seeking residents to join and contribute to the groups.

On the Common the current problem is rabbits and work is going on to encourage them to go elsewhere. Natural England came to inspect the Common earlier this month and agreed that it was in pretty fine shape. As a result a letter has been sent to thank the Community Payback Team, whose efforts have been so well appreciated.

HCC Highways paid us a visit to review all outstanding works and to discuss plans for clearing culverts and streams in time for the autumn weather. As our own Cllr Gibson has agreed to become the inspector of highways works, we hope to see the condition of the roads improve and the water dispersal system fit for purpose.

Do remember that the meetings of the Parish Council are open. This means that anyone may attend. We meet in the Durnford Room of the Village Hall on the first Tuesday of the month. Our next meeting will be at 8 pm on Tuesday 6th July. We would be pleased to see you there.

*Jeremy Baines*  
*Chairman, Chilbolton Parish Council*



**PUBLIC MEETING - THE FUTURE OF  
CHILBOLTON COMMON  
14 September, Chilbolton Village Hall**

Chilbolton Common is an area of outstanding beauty and an enormous asset to the people of Chilbolton and Wherwell. Many enjoy it for exercise, dog walking or as a place of quiet contemplation. However, the very attractiveness of the Common and its appeal, particularly during the summer months, to large numbers of people is putting an increasing strain on the Common, having a negative effect of those that live on or around it, and restricting its use by many villagers.

There have been occasions already in 2010 when 250+ people have been on the Common, travelling from Andover or much further afield. The issues associated with this level of use include parking problems, increased litter, encroachment into areas designed to protect wildlife, barbeques and problems related to the lack of toilet facilities. In addition to the nuisance value that this generates, the status of the Common as a Site of Special Scientific Interest (SSSI), which is key to its maintenance, is also under significant threat.

Chilbolton Parish Council, which has stewardship responsibility for the Common, is planning to make a number of changes to the management of access to the Common in 2011. These are aimed at addressing the current issues and ensuring that the Common is maintained and preserved for the future use of the people of Chilbolton and Wherwell. However these changes may be seen as restrictions by some and may have knock-on effects in other parts of the two villages, particularly along Village Street in Chilbolton and Fullerton Road in Wherwell where additional car parking may occur. For these reasons, Chilbolton Parish Council would like to discuss their proposals at an open meeting, obtaining feedback from as wide a group of interested villagers and users of the Common as possible.

If you would like to influence the future of Chilbolton Common, PLEASE PARTICIPATE in the public meeting which will be held in Chilbolton Village Hall on 14 September, starting at 7.30pm.

*Peter Collis  
Chilbolton Parish Council*

# Ragwort Pull

Help the conservation of our Cow Common. Join the Ragwort pull for 2 hours, 10-12 am Saturday 17 July.

Bring gardening gloves, a garden fork and, if you can, a wheel barrow (best is one with an inflatable wheel)

**More information: Moya 01264 860411**



‘Why bother?’ you ask. Good question! The Common has to be grazed; in this way the grass is short enough for the rarer plants to flourish. Ragwort is poisonous to cattle and is therefore a notifiable weed under the Weeds Act. So we have to remove it as it could hurt the cattle.

It pulls up most easily when in flower – hence the timing. The Parish Council as the owner of the Common is responsible for seeing that this is done, so we need your help. Just 1 hour of your time on Saturday would be an enormous help.

## Children!

There will almost certainly be someone there to tell you the names of the flowers and the insects you will see. Bring a pencil and paper, draw what you see. Ragwort is the only flower we will be removing, all the others are precious!!

---

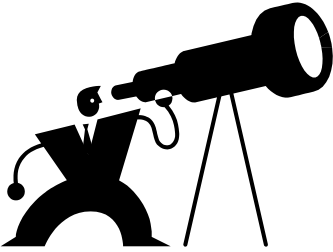


## MIDDAY MUMS

Come along to Wherwell Village Hall on Monday 19<sup>th</sup> July around 12.30, bringing something to share for lunch. It’s a time to chat or play with friends!

*Susan Ansell 01264 860775*

## Vision for Chilbolton



Chilbolton Parish Council has recently created a draft 'Vision' document. This document aims to explore some of the technology, safety, environmental and general 'where do we want the village to be' questions which we need to proactively consider if we are to plan for the next 1 to 20 years.

Some of the topics are potentially controversial, but they at least need to be discussed before being rejected. Other topics could take many years to plan for, and as such discussion needs to start straightaway. As the environment and working practises change around us, and there is increasing focus on health and well-being, we need to make sure that as and when we need to act, everything has already been planned and is ready to be implemented.

As the document develops, key topic areas will be presented to the village via evening discussions and circulation of the document, so that everyone has the opportunity to comment on the ideas being developed. To aid this process, the document explores a number of detailed areas and is broken down into related topics. These topics are then discussed and developed via a number of subcommittees. The 3 new subcommittees are:

*Technology:* data access, mobile coverage, high tech advice to other groups, etc

*Environmental:* energy saving, air and water pollution, etc

*Heath and Life Style:* fitness, medical access/support, sport, etc

We are now looking for anyone who would like to work on these important topics within the subcommittees so that we can present the first full draft of the document in six months time.

Anyone wishing to become involved should contact Cllr Martin Gossling either by email on [martin@cranog.com](mailto:martin@cranog.com) or on 861375.

*Cllr Martin Gossling*



## Jane's Kitchen

RHUBARB, some experts tell us, should not be pulled much after the end of June. The stems lose flavour, can become soft and the crown is weakened causing a poor crop the following year. However here is a quick and easy recipe for a final fling:

### **Rhubarb and Strawberry Fool** (serves 4)

250g rhubarb, chopped and cut into small chunks

60 g caster sugar

100g approx of strawberries washed and hulled

Cook the rhubarb with a small amount of the sugar until very soft. Crush the strawberries and add to the cooked rhubarb whilst it is still very hot and allow this to cool.

Bring the cream and remainder of the sugar to just boiling point. Allow to cool slightly and then stir into the fruit. Pour into serving glasses or serving bowl. Refrigerate for at least 5 hours.

*Jane Spence*

---



## Chilbolton Players

The Chilbolton Players AGM was held at the Chilbolton Village Hall on Wednesday 2<sup>nd</sup> June. The Players and committee would like to extend their thanks to all work completed by Angie Budd, Sue Austin and Andy Hawke who have stood down from the committee after many years of service.

We all look forward to seeing you at THE CHALICE murder mystery dinner. This is a play written by Andrew Coombes and performed by the Chilbolton Players on the 8<sup>th</sup>, 9<sup>th</sup> and 10<sup>th</sup> of July. We have some additional exciting projects for later in the year too so it's going to be a busy one...

*Carole Marits*

Tuesday 1<sup>st</sup> June saw Chilbolton Village Hall (CVH) hosting the Annual Summer Meeting of the Wessex region of the Institution of Mechanical Engineers (IMechE) which was attended by over 47 Engineers, spouses and invited guests from all over the Wessex region and beyond.

The evening commenced with a visit to the home of Jim and Mary Dunne to see the latest range of micro-generation technologies including a GS Heat Pump; Solar thermal System and the recent Solar PV technology which generates >2kW of electricity to be used in the house or exported into the local distribution system. This latest addition probably makes Littlemead one of the most energy efficient private houses in the district, but it was the integration of all three technologies that interested the institution members and their partners (not to mention the reduced energy costs!) Jim and Mary Dunne had a very hectic couple of hours as the visitors were shown around the plant room in small groups and fielded a large number of questions.

After the last visit had taken place at about 7pm, the members and their guests returned to the village and enjoyed an excellent meal based upon a hog roast provided by Catering 4 Occasions from Stockbridge. Everyone was offered doggie bags and lunch the next day for many people will no doubt have been the delicious roast pork.

Many of the guests commented on the excellent facilities at CVH which was certainly not what they expected when it was advertised as being in a village hall. The new stage also attracted much interest from the mechanical engineers present and the tapestries created equal interest for the ladies.

*As a footnote to this report by Carole Marits*

On behalf of IMech.E, Jim Dunne wishes to express our sincere thanks to Carole Marits for the many signs and notices she produced for the day and to George Marits who marshalled and guided all the visitors from the Village Hall to Littlemead and back (without losing one)

Thank you both very much!

*Jim Dunne*

## **Magnificent News from Chilbolton**

What a wonderful response from the people of Chilbolton to the Christian Aid Week 2010 appeal in May! The amount raised was £960.59 (later made up to £1000 by a generous gift). £622.00 was gift-aided which will yield a further £155.50.

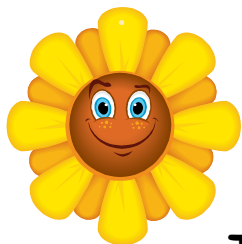
The collectors were fantastic, braving unseasonably cold weather. A big thank you to Charlotte, Davina, Debbie, Jemma, Jenny and Jolyon, Ros, Sandy, Sue, Sue and Peter, Sylvia, and Trish.

If you would like information about Christian Aid, or you were out when the collector called, there is a website at [www.christianaid.org.uk](http://www.christianaid.org.uk) or you can call 020 7523 2225.

On behalf of Christian Aid I would like to thank all those who contributed.

*Mick Batchelor*

---



**Chilbolton Horticultural Society**

**Summer Social**

**Tuesday July 13<sup>th</sup> @ 7:00pm**

**Evening Social in a member's garden**

**Wine & fruit juices & light refreshments will be provided. Members and anyone interested in joining welcome**

**For details of venue tel:**

**Sheila Evans 860 697**

## Magazine Advertising for 2010 - 2011



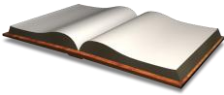
I have just taken over as Advertising Manager from Barbara North – a hard act to follow as I'm sure you all know. However, I can but do my best!

During July I will be contacting all the existing advertisers to invite them to renew for the coming advertising year that will begin with the October Magazine. A list is maintained of all who have made enquiries during the year and have had Flyers inserted. If you would like to advertise in the magazine or know of anyone who may be interested then please get in touch.

The Magazine Committee would also like to use this opportunity to thank all our Advertisers, as it is their contributions, together with all our valuable volunteers, which enables us to continue to produce the Magazine and distribute it free of charge to all 750 households in the two villages.

We are also grateful to all of you who regularly consult the Magazine when needing a service – it really helps if you tell the Advertisers where you found their details.

*Hilary Jennison*  
*Tel: 01264 861250*  
*Email: [hilary.jennison@homecall.co.uk](mailto:hilary.jennison@homecall.co.uk)*



## Dates for your diary

### July

1/2/3 July	'Garden' Stockbridge Drama	Longstock	
2 July	Film: It's Complicated	CVH	7.30pm
3 July	Wherwell Coffee Morning	WVH	10.30am
6 July	Parish Council Meeting	CVH	8.00pm
8 July	Mobile Library	See Below	
6 July	Chilbolton PC	CVH	8.00pm
8/9/10 July	The Chalice, Chilbolton Players	CVH	7.30pm
11 July	Simply Sunday Biking and Tea	CVH	4.00pm
13 July	Wherwell PC	WVH	7.00pm
16 July	Village Hall Quiz	CVH	7.30pm
17 July	Annual Ragwort pull	Chilbolton Common	10.00am
19 July	Midday Mums	WVH	12.30
20 July	WI: Mick Batchelor Machu Pichu	CVH	8.00pm
22 July	Mobile Library	See Below	
25 July	Simply Sunday breakfast	Rectory	8.45am
25 July	Removal of Sycamore saplings	West Down	10.00am
29 July	Collation	CVH	7.30pm
Tuesdays	Keep Fit	WVH	9.30am

### August

3 August	Wherwell Wives Group BBQ	Dancing Ledge	7.30pm
7 August	Wherwell Coffee Morning	WVH	10.30am
16-22 Aug	Summer walks with Eryl and Clive Thomsett		

### Mobile library

	11.15am to
<b>Wherwell, White Lion</b>	11.45am
<b>Chilbolton, Village Hall</b>	12noon to 12.45pm
<b>Chilbolton, Bannuts Farm</b>	2.10pm to 2.30pm



## WHAT'S ON IN THE AREA

### Theatres:

02/07/10: **Hardeep Singh Kohli-The Nearly Naked Chef.** At The Lights, Andover at 7.30pm. Tickets £13-£14 (£12 concessions. Tel (01264) 368368 [www.thelights.org.uk](http://www.thelights.org.uk)

18/07/10: **With Great Pleasure. A Celebration of Literature.** Presented at 7.30pm at Theatre Royal, Winchester. Tickets £18 (£15 concession). Tel (01962) 840440 [www.theatre-royal-winchester.co.uk](http://www.theatre-royal-winchester.co.uk)

20/07/10 to 23/07/10: **Blue Remembered Hills.** By Dennis Potter. Presented by RAODS in Romsey Abbey Grounds at 8pm. Gates open at 7.15pm, bring your own seating. Not suitable for young children. Tickets £10. Tel (01794) 512987 [www.plazatheatre.co.uk](http://www.plazatheatre.co.uk)

### Music:

22/07/10 to 24/07/10: **Rock Around the Clock.** At Theatre Royal, Winchester at 8pm & 2.30pm (Sat matinee). Tickets £24 (£22 concession) evenings, £18 (£16 concession) Saturday matinee. Tel (01962) 840440 [www.theatre-royal-winchester.co.uk](http://www.theatre-royal-winchester.co.uk)

24/07/10: **See The Light.** Concert in aid of Andover & District Mencap New Resource Centre performed by The Vocal Point Choir at The Lights, Andover at 7pm. Tickets £10 (£9 concession) from The Lights, Waterstones, Andover & District Mencap (Tel (01264) 321840) [www.thelights.org.uk](http://www.thelights.org.uk)

30/07/10: **A Musical Tour of Romsey Abbey** performed by Romsey Counterpoint Singers at Romsey Abbey at 7.30pm. Tel (01794) 512987. [www.romseynet.org.uk/musicromsey.htm](http://www.romseynet.org.uk/musicromsey.htm)

### Other events:

04/07/10: New Forest Road Sportive Challenge (cycling) from Hillier Gardens near Romsey. For information see [www.testvalleytour.com](http://www.testvalleytour.com)

24/07/10 to 31/10/10 **Sculpture Hunt.** Fun trail for families to follow at Hillier Gardens near Romsey. From 10am to 6pm. Free with normal admission. Tel (01794) 369318 [www.hilliergardens.org.uk](http://www.hilliergardens.org.uk)

### Country Markets:

Country Markets are held weekly in Andover and Stockbridge selling homemade and local produce. The Stockbridge market is held in the Town Hall every Thursday, 10.00am - 12.00 noon. The Andover market is held by the Guildhall every Friday, 7.30am – 1pm

### Farmers' Market Dates:

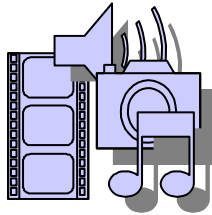
11 Jul 2010 – Winchester

18 Jul 2010 – Andover

25 Jul 2010 – Winchester

For more information, please ring (01420) 588671, or visit the website at [www.hampshirefarmersmarkets.co.uk](http://www.hampshirefarmersmarkets.co.uk).

Come to the  
Movies !!



CHILBOLTON VILLAGE HALL MANAGEMENT  
COMMITTEE

Proudly Present

**It's Complicated** <sup>(15)</sup>

"First comes marriage. Then comes divorce. And then ....."

After 10 years, a divorced couple meet up at their son's  
graduation.

A few drinks and a lot of reminiscing lead to ..... who knows  
what?

Starring Meryl Streep, Alec Baldwin and Steve Martin

In Chilbolton Village Hall

on

Friday, 2<sup>nd</sup> July, 2010, at 7.30 pm

Doors open 6.45 pm

Tickets £5.00 - In advance

Or £5.50 - On the door (subject to availability)

Price includes tea/coffee and biscuits

Wince and choc ices will be on sale

To book your ticket, please ring:

Sheila Laughton on 01264 860460

Maureen Treadwell on 01264 860380

or Beryl Lawrence on 01264 860618

**PROMS IN THE VILLAGE**  
**11TH SEPTEMBER - SAVE THE DATE**



Surely this must be the musical highlight of your 2010. Live music from far and wide, the main Proms event on the big screen, gourmet food and champagne, all you need to do is bring a friend!

WHY WATCH THE PROMS AT HOME!?!

And it's all for a good local cause. The Countess of Brecknock Hospice, which provides palliative care for those with terminal illness. Ticket price TBA, live music before the main event TBA.

*Richard Rowles*

## **Chilbolton WI**

Jack Wilson was our speaker for the evening, and he talked about the medieval history of Southampton. We were pleased, as always, to be joined by friends and husbands of our members. Jack described not only the medieval history of Southampton and its development as a city, port and spa, but revealed the living history that is incorporated into daily life now.

We join with other members of our WI Danebury group regularly and proudly surprised ourselves by achieving 4<sup>th</sup> place in the recent Group Quiz. The Group Summer Garden Party in July will be our next opportunity to meet these friends.

Next week we'll meet socially to share lunch and at our July meeting (July 20<sup>th</sup>) we are looking forward to our next guest, Mick Batchelor, telling us of his experience of travelling to Peru and climbing Machu Picchu. Visitors will be most welcome.

*Sue Keen*



**A relaxed, happy learning environment for children aged 2 years 9 months to school age.  
Come and see our beautiful rural setting**

The Children of Chilbolton Pre-school have had a busy May and start of June. Our pre-school fete was a huge success and we raised enough money to buy a wooden train for the lovely outside area.. Many thanks to everybody who supported us.

On Election Day we visited Wherwell school and were lucky enough to look at the woodland and find mini beasts. We then finished the morning off with a picnic in the new play park.

Lots of children will be leaving us to go to primary school in September and we are busy with transition visits with the local primary schools.

We invited the Reception classes of both Clatford and Wherwell schools to Pre-school to watch a Proteus Theatre Company production – Poppy and her Magical Machine. It was great to see so many children in the village hall having so much fun. Many thanks to the Pre-School Committee for organising this.

Please note that our AGM is at 8.00 pm in the Durnford Room, Chilbolton Village Hall on Tuesday, 14<sup>th</sup> July.

The summer holidays are approaching and we still have spaces available for September 2010 so if you have a child who is approaching pre-school age, please call us soon and arrange a visit.

*Sam Inglis Tel: 0773 2095 814*  
[www.chilboltonpreschool.com](http://www.chilboltonpreschool.com)



## **Refreshment Stall - Wherwell Church Fete**

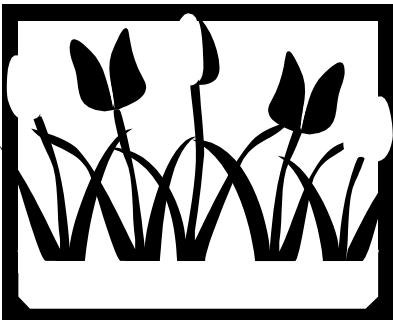


### **Thank You**

Many thanks to all the lovely ladies who contributed delicious cakes and sausage rolls to sell with the teas, they were very much appreciated.

Our special thanks to Lizzie Broadbent, Sue Blazdell, Mary Gee and Pam Wilson for all their hard work in the kitchen and ‘front of house’.

*Pam and Andrew Flanagan  
Gill and Peter Granger*



## **GARDENS OPEN FOR CHARITY IN THE AREA JULY 2010**

### **Sunday 4<sup>th</sup> July**

Longstock Park Water Garden is open from 2pm to 5pm in aid of Age Concern Winchester. Admission is £5 for adults, £1 for children under 14. Teas are available at Longstock Park Nursery. [www.longstockpark.co.uk](http://www.longstockpark.co.uk)

### **Saturday 10<sup>th</sup> July**

The Buildings, Broughton, Stockbridge open for The National Gardens Scheme (NGS) from 2pm to 5pm. Admission £3, children free (share to Friends of St Mary's Broughton and St James' Bossington. Home-made teas. [www.ngs.org.uk](http://www.ngs.org.uk)

### **Sunday 11<sup>th</sup> July**

The Buildings, Broughton, Stockbridge open for The National Gardens Scheme. As 10<sup>th</sup> July.

### **Sunday 18<sup>th</sup> July**

Longstock Park Water Garden is open from 2pm to 5pm in aid of Southampton Sight. Details as 4<sup>th</sup> July.

### **Sunday 18<sup>th</sup> July**

Crawley Gardens open for The National Gardens Scheme (NGS) from 2pm to 5.30pm. Combined admission £5, children free. Home-made teas at Village Hall. [www.ngs.org.uk](http://www.ngs.org.uk)

### **Tuesday 20<sup>th</sup> July**

Crawley Gardens open for The National Gardens Scheme. As 18<sup>th</sup> July.

# The Wherwell History Group

Last month we conducted an interview with Mrs Audrey Beckenham before she moved from Wherwell to live near to her daughter in Colden Common. Audrey was an only child who spent the WWII years in Fulham, where she had to be rescued from a bombed-out shelter. Later Audrey worked in the War Office in London, and met Walter Beckenham at a dance in Andover during an Easter holiday. Walter lived with his parents and siblings (Ted, Gordon, Dorothy and Florence) in Beech Grove. Audrey and Walter married in June 1954 and moved to No. 3 Cottonworth Cottages.

Audrey had plenty to tell us and show us, including two old newspapers and two jigsaw puzzles. The Andover Advertiser dated 7<sup>th</sup> July 1978 was important because of a wedding picture of their daughter Jennifer. The Southern Evening Echo dated 24<sup>th</sup> November 1981 contained an article about the Home Guard Club, complete with a photograph of Charlie Robbins and Walt Beckenham. The cover pictures on the puzzles may look familiar enough, but not many people can have a jigsaw which features their husband and daughter!



The History Group is keen to conduct more local interviews this summer. We have the technology! We just need a little more manpower. Perhaps one of you reading this article fancies trying their hand at being an Andrew Marr or a Jenni Murray? If so, please contact Mike Gee on 860 592.

Audrey's newspapers turned out to be both a keepsake and local history gems because they also contained articles about the following features and people:

**“Chapel Makes Way for Parking”** ... Soon to disappear under the bulldozers is the 135-year old Wesleyan Chapel at Wherwell ... The chapel, in Wherwell's main High Street, is to form car parking space for a row of cottages behind it, which Test Valley Council is doing up and offering for sale to people on its housing lists.

**“Careless Wherwell”** ... On Saturday, Wherwell batsmen made a disappointing attempt at chasing Castle's total of 121 and were beaten by 18 runs. In the absence of injured skipper Bill Picket, Mike Hardy (5 for 35 off 13 overs) and Ted Theobald bowled accurately at the uninspired Castle openers. Wherwell started competently before Alan Rowles was caught and then veteran Sid Rowles was joined by young ‘Tiger’ Redwood in a patient stand of 45 for second wicket. When Redwood was judged lbw, the Wherwell batting fell apart to the bowling of Hinxman (5 for 18 off 17 overs).

**“Dr Cecil Cope Retires”** ... After 38 years of treating sick patients in Andover and district, Dr. Cecil Cope retired on 30<sup>th</sup> June. He started in Andover on 1<sup>st</sup> July 1940 at the London Street surgery, which was to continue in use until shortly before last Christmas when the partnership moved to the Adelaide Road Health Centre. .... Formerly resident at Croye House, he and Mrs Cope built their own home at Wherwell, to where they moved 18 years ago. ... *Today, one of Dr Cope's two children (Mrs Brenda Headley) still lives at Bramshill, with her husband Richard.*

**And finally** ... all those readers who complain about poor mobile reception in Wherwell, or who video-chat with relatives in a different country, or who think their phone bill is expensive at the equivalent of three pints of beer per week, or who marvel at how so much data can be delivered to their desk through such a tiny strand of wire, may like to savour a report from the Andover Advertiser in 1928 ...

*“A new telephone call office has been opened at Wherwell. The fee for the use of the call office, including communication with any exchange within a radius of five miles will be 2d. The charge for a call to an exchange between five and seven and a half miles distant will be 4d. Trunk facilities are limited to areas embracing Salisbury, Guildford, Reading and Southampton groups, Bournemouth, Swindon, Devizes and Portsmouth (local). For instance, the total fee for a three minutes conversation with a subscriber at Salisbury would be 9d, and to Southampton 9d.”*

For readers not familiar with pre-decimal currency, 12d (12 old pence) = one shilling (5p).

*Andrew Flanagan*



Campaign to Protect  
Rural England  
HAMPSHIRE

**CPRE Test Valley  
invite you to enjoy a**

**Tranquil Cruise  
on the  
Kennet & Avon Canal  
On the horse-drawn barge “Kennet Valley”**

**Friday 3rd September 2010,  
11.30am to 2.30pm**

Starting from Kintbury in Berkshire, this leisurely cruise, which will last for 3 hours, travels along the canal in an easterly direction, transiting through Hampstead lock on the way. A ploughman’s lunch will be served during the cruise and hot & cold drinks can be bought from the well-stocked on-board bar. The cost for the trip, to include lunch, is £20 per person for CPRE members, £22 for non-members.

If you would like tickets to this event, please contact:

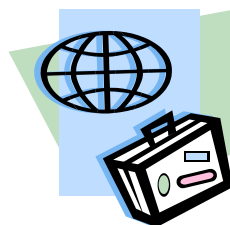
**Moya Grove, Reynard, Branksome Avenue, Chilbolton, SO20  
6AH  
Tel: 01264 860411**

---

## **Grand Tour 2010**

### **Part 1 – planning phase, then ..... up, up and away**

For quite a number of years now Phill and I have been promising ourselves a trip to Australia and New Zealand, but for one reason or another we hadn’t found the time, the motivation - whatever! I only had one stipulation, which was that the trip should last for at least three months.



Towards the end of 2009, a set of circumstances arose when we realised that maybe; just maybe, there could be a ‘window of opportunity’. We decided we would go all out to make it happen. Phill gave notice at the FE College and University that he wouldn’t be



available as a lecturer for a term and put his other work activities on hold. I got people to cover some of my work in my absence; anything that could wait would just be suspended until I got back.

First things first – the planning phase.... We met up with a number of people who had ‘done’ Australia and/or New Zealand and picked their brains about their experiences. These were people of all ages – our daughter, her boyfriend, friends of our age - basically anyone at all with any experience. From their experiences Phill put together a plan. He sent this out for comments to anyone who had contributed and made adjustments based on feedback received.

We knew that we couldn’t leave the UK until late January 2010 as Phill had exam papers to mark and I had a set of year end accounts to complete for one of my clients. We decided to visit Hong Kong on the way out for three days, New Zealand for four weeks, Australia for eight weeks, with a week in Hawaii on the way home for some relaxation time. New Zealand followed Hong Kong so that we would hopefully get the better weather there before it took a turn for the worse. We planned to visit South Island first as the weather tends to stay better for longer on North Island. Phill planned the order with rough times in each country, I then added flesh with exact dates and timings. I then booked (and paid for!) the flights – it was all starting to look real – no turning back!

In January 2010 we began to book accommodation and look at trips we wanted to do in each country. We had decided that wherever possible we would use hostels operating under the YHA banner. We saw this as a good way of meeting people like us who were travelling and also picking up tips along the way – we wanted to have a ‘backpacker’ experience. We always had our own bedroom with en suite wherever possible - no dormitories for us! We hired a car for New Zealand as we felt that was the easiest mode of travel with driving distances not being too great. In Australia we booked a lot of internal flights for the first month of our time there – flying into Perth initially, then Perth to Alice Springs, Alice Springs to Darwin, Darwin to Melbourne. From Melbourne we would use the Greyhound Bus to travel up the east coast to Cairns – we know how to live! We also went the whole hog and planned a number of overnight trips on the Greyhound Bus. At the end of our time in Australia, we would fly out of Cairns to Hawaii via Sydney.

January seemed to be flying past. We researched and booked a number of trips in both New Zealand and Australia. Some were day trips, some two or three days. We bought new luggage and a few lightweight clothes – things easy to wash and dry, but most importantly items to keep us within the 23kg luggage allowance we each had – not a lot for three months! We sorted visas for Australia and Hawaii. There were financial issues to address – payment of bills, availability of money whilst away to name but two. There were also car ‘challenges’ to take care of – tax discs and insurance expiring, my car needing its first MOT – the list went on. In general, Phill looked at the big picture, whilst I sweated the small stuff – our normal ‘modus operandi’!

On 26 January 2010 our youngest daughter dropped us off at Heathrow Terminal 5 (pre BA strikes) and off we went – on time, overnight to Hong Kong. We then use the very efficient train service to take us to our Hotel.



We had a great time in Hong Kong – it’s a busy bustling place - very cosmopolitan. We used the Star Ferries to zip back and forth across the harbour, visited the night markets, Kowloon,

Hong Kong Island, the botanical and zoological gardens, Hong Kong Park and watched the evening laser light show in the harbour – spectacular!.

We also took a ferry to Lamma Island which has a slower pace of life and seems to appeal to those seeking an alternative lifestyle – lots of alternative therapy practitioners. I had visited Hong Kong on a previous occasion but this was Phill’s first experience. He went running in the park each morning and watched people practising Tai Chi.



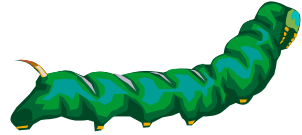
After three days in Hong Kong, we re-packed our bags (not that we ever fully unpacked them) in readiness for the overnight flight to New Zealand.

To be continued .....

*Hilary Jennison*

## Chilbolton & Wherwell Wildlife

Many of you may have recently noticed lengths of local hedgerow that have been covered by silken webs, and completely denuded of foliage. Nearly all these webs are on the bushes of Spindle (***Euonymus europaeus***), and are made by the caterpillars of a tiny white moth called the Spindle Ermine



(***Yponomeuta cagnagella***). These webs are most frequent in our area along the A30 either side of Stockbridge, and around Kings Somborne. The little greenish-yellow caterpillars feed communally in the protection of their webs, and within a couple of weeks eat all of the leaves. But then they pupate, and every year, within a few weeks, the bushes recover with fresh foliage. The Spindle infestations have been particularly dramatic this year, but they are not harmful either to the hedgerows or to humans.

However, similar webs on other types of bushes (especially Hawthorn) are made by other species - including *the* Brown-tail moth. Infestations of the Brown-tail moth can be a serious problem, because the caterpillar hairs are an extreme irritation when in contact with human skin, and the hairs can simply get blown in the wind. So, if you see webs on Spindle in late May or early June with little greenish-yellow caterpillars – no need to worry. But if you should see webs with dark brown hairy caterpillars (typically on Hawthorn, and usually a little earlier, in April) – then be careful, because they may be the webs of the Brown-tail moth.

### Some help needed:

Feel like a couple of hours in the fresh air? Your help would be very much appreciated at either/both of the following Working Parties in July:

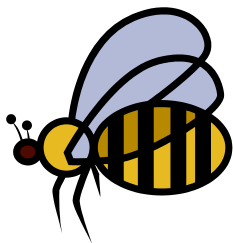
**Saturday 17<sup>th</sup> July 10:00am.** Chilbolton Common - for the annual pull of Ragwort (details elsewhere in the magazine).

**Sunday 25<sup>th</sup> July 10:00am.** West Down – to help remove Sycamore saplings from the downland slope. Meet at top car-park. All are welcome; please bring loppers or secateurs, & your gardening gloves.

The slope has been particularly good for butterflies this year, with many Grizzled Skipper, Brown Argus, Green Hairstreak, and also the rare Cistus Forester moth. But to keep these downland butterflies, it's important we prevent scrub from smothering the short turf and flora.

Glynne Evans ([hantsbto@hotmail.com](mailto:hantsbto@hotmail.com))

## Bee Diary June 2010



### The Great Chilbolton Swarm

Halfway through the harvesting of the spring honey crop, which we remove from the hives when the rape fields change from yellow to green, we arrived in the Chilbolton apiary to find a huge swarm of bees hanging off a vacant hive stand. It was one of the biggest swarms I have seen in recent years, and we were puzzled as to which hive it had emerged from. In fact it had not come from our hives at all, but had pitched into the apiary as if looking for a kindly beekeeper to house it. There must have been 25-35,000 bees in the swarm, and when we shook it into our straw skep, it overfilled it. We left it to settle down before setting up a hive to house it. Big mistake, within an hour we had Nick Brown on the phone saying that an enormous swarm had passed over his garden, heading for our house. All went quiet for a couple of days, we were expecting to hear of bees in the belfry - Errol tells me he has bees in Bibury belfry, (say that after a couple of drinks!) or in someone's roof.

Then Jeremy Baines rang. He had a large swarm in the front garden, hanging in a bush. Now this is a beekeeper's ideal swarm - large, and easy to get at. We shook it out of the bush into the skep, gave it minimum time to settle down, then wrapped it up in a sheet and took it by car to Dave Peart's new hive in Lower Wyke. Dave is a novice beekeeper who was assigned to us in April to be mentored in his first season. Coming to work with us on 25 hives could be considered more like slave labour than gentle training, but Dave has helped a lot, learnt a lot and has certainly earned his first colony. The bees are now in that complete lap of luxury, a brand new cedar hive with a proud new beekeeper all too willing to provide for their every need.

With the honey off the hives, it will soon be time to move some of them to a new nectar rich location. We have a number going into Harewood forest for the blackberries, there are acres of brambles just getting ready to flower and the bees love them. Some of the hives will stay on John Cape's farm at Hatherden, he has planted meadows of wild flowers, including a great honey producing crop called buckwheat. John does this to feed the wild birds during the winter and to encourage insects. See the RSPB website page: <http://www.rspb.org.uk/news/details.asp?id=tcm:9-251818>

Finally at the end of July we will select our twelve strongest colonies who will earn for themselves a working holiday on the New Forest heather. It's a bee's life!

*Jolyon Pope*

**Chilbolton Village Hall Management  
Committee**

**QUIZ EVENING**

**Friday 16<sup>th</sup> July**



Come and join us for a light-hearted evening of quizzing  
in support of

Village Hall Funds

commencing at  
7.30pm in the Village Hall

Ploughman's Supper included

**WINE AND SOFT DRINKS WILL BE ON SALE**

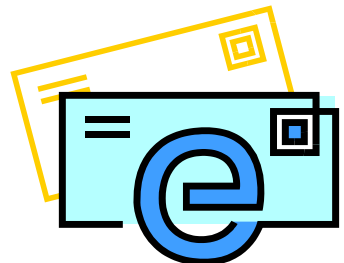
**Tickets at £5 per head, teams of 8 per table, but don't worry if  
you are unable to make up a team as gaps can filled as  
necessary**

**To book, telephone John Temple: 861334**

**Don't forget!**

Chilbolton & Wherwell Community  
Magazine now has a dedicated email  
address. Please send articles and any  
queries to:

**[cw.magazine@hotmail.co.uk](mailto:cw.magazine@hotmail.co.uk)**



## **Cycle 4 Life**

*with Inspired Living For Cancer Research UK*

**On Saturday, September 4<sup>th</sup>, 2010**

*Cycle ride of 33 miles from St Swithun's School, Winchester to  
Southsea Common, Portsmouth*

'Ordinary people do extraordinary things'

### **Entry fees:**

Single £12

Family £30

Team £36

All ability levels and ages welcome

This is the first stage of the ride from Winchester to Gibraltar for a core group of 30. We will target to raise £1M for Cancer Research.

CANCER RESEARCH UK



Please sign up on the website:

**[www.inspiredliving.org.uk](http://www.inspiredliving.org.uk)**



## **Chilbolton Football Club looks forward to the future**

Chilbolton FC prepare for the new season under the new manager, Sam Horne who will be supported by player/coach Neil Gallimore. We all wish them luck as they usher in a new era. Sam Horne is also keen to attract some new players to the squad and would like to extend an invitation to you all to call him on 07789 517710 if you are interested in playing.

The Club will be looking to work with the Parish Council to refurbish the Pavilion. This will allow us the kitchen facilities to offer

tea and cakes at matches and encourage more supporters from the village. Another intention is to build stronger ties to the Abbots Mitre and congregate at the pub after matches.

For next season, pre-season training will start again on Thursday 1<sup>st</sup> July at 6pm on the Playing Fields by the Common, and continue each Thursday evening until the end of August. All are welcome.

For further information on the Football Club and match dates, please look at the website at [www.chilboltonfc.co.uk](http://www.chilboltonfc.co.uk)

If you feel that you would like to know more about the team or details of the training sessions please contact Andrew on 01264 861138

### **Kids' Football**

Chilbolton FC is looking to set up a kids' team for the six to eight year age groups. We are also willing to have an under-ten year group if there is sufficient demand.

If you have children wishing to join the teams please contact Andrew on 01264 861138. The team would play on our playing fields on Saturday mornings and an appropriately sized pitch will be marked out.

*Andrew Gibson*

### **Articles needed!**

Do you think you could write an article for the magazine? If you have anything at all you would like to write about – eg, an unusual experience, jobs, holidays, local places of interest, outings to gardens and houses, etc. we would love to hear from you.

Our volunteers work very hard to produce the magazine each month, but we do rely on content coming in from villagers. We have our regular contributors, but we really would welcome more articles, so have a think, have a go – send something in – please..... The magazine is only as good as the content we receive.

