

Chilbolton and Wherwell Community Magazine

Happy New Year!

Our snow covering has gone for now and the new grit bins were very useful to keep our villages moving in the bad weather. It's no wonder many of us look to find some winter sunshine to beat the winter blues. January looks like ending in a dull haze but with the promise of spring to come and what a lot we have going on.

Have a look at the diary pages we have quizzes, talks, walks, coffee mornings, keep fit , balls films and panto's as well as all of our regular village activities. From bees to mobile phones and broadband we have something for everyone this month.

Welcome to 2011 and may it be your best year ever.

Carole Marits

Thank you to Sue Blazdell, Gail Budd, Ray Blazdell and Carole Marits who produced this month's magazine and to Andrew Flanagan & Michael Payne for Printing and Mike Keys and helpers for collation and distribution.



Church Matters

The Downs Benefice

The Revd Juliet Montague, BTh (normal day off: Monday)
Curate: The Rev'd Stuart Rason, The Rectory, Chilbolton Tel: 860258
Benefice Administrators: Vanessa Denham & Maggie Hobbs



From the Parish Registers:

Chilbolton		
Wedding	18th Dec	Mark Josling and Kate Riggs
Funeral	23rd Dec	Elizabeth Simeon
Funeral	6th Jan	Honor Manley
Funeral	17th Jan	Leonard Rose
Wherwell		
Wedding	11th Dec	Alexander Ashur and Hannah Gilbert

Church Services February 2011

	St Mary the Less Chilbolton	St Mary's Crawley	St Catherine's Littleton	St Stephen's Sparsholt	St Peter & Holy Cross Wherwell
Wednesday 2nd February					
Holy Communion			9.30am		
Westholme			2.30pm		
Sunday 6th February The Fifth Sunday before Lent					
Holy Communion					
Family Communion			10.00am	10.00 am	
Common Worship					10.00 am
Morning Worship		10.00 am			
Evensong	4.00pm				
Wednesday 9th February					
Holy Communion			9.30 am		
Sunday 13th February The Fourth Sunday before Lent					
Holy Communion				8.00 am	
Morning Prayer	10.00 am				
Family Communion Sunday School @ Crawley		10.00 am	10.00am		
Welcome Worship				10.00 am	
Wherwell Sunday School					4.00 pm
Evensong					6.00 pm
Wednesday 16th February					
Holy Communion	10.30am		9.30am		
Thursday 17th February					
Flowerdown HC			2.30pm		
Sunday 20th February The Third Sunday before Lent					
Holy Communion		8.00 am	8.00am		
Morning Worship			10.00 am		
Family Service					10.00 am
CW Holy Communion	10.00 am				
Matins				10.00 am	
Meditation on Pilgrimage- Benefice Service		6.00pm			
Wednesday 23rd February					
Holy Communion			9.30 am		
Meditation			7.00pm		
Saturday 26th February					
House Communion			10.00am		
Sunday 27th February The Second Sunday before Lent					
Holy Communion					8.00 am
Family Service	10.00 am				
Family Communion			10.00 am	10.00 am	
4 th Sunday Worship with Sunday School		10.00 am			
Peace & Healing			6.00pm		

Thoughts from Stuart

As I sit and write this article reflectively, looking out at a wet January day and musing about what this year will hold for us all, I wonder how we will approach the challenges that it will bring. One of the news articles about a recent plot in the BBC's 'Eastenders' programme caught my attention. The plot, which I confess I only know second hand, seems to revolve around two women who both give birth to a baby, one of these babies then tragically dies, and the bereaved mother swaps her dead baby for the other one.

This caused a bit of a media storm about the treatment by the writers of the issues of cot death, kidnap and various other related themes. My thoughts led me to wonder why the writers tackled this issue - was it to inform, educate, raise awareness or debate, or to entertain? How will they resolve the issues and to what conclusion?

None of the various comments that I have seen, decrying or defending the plot line, seem to realise that the plot is an ancient one! The judgment of Solomon, where the king is asked to adjudicate between two women in the same situation (the biblical reference is 1 Kings Chapter 3), is a gripping and vibrant scene from which we get the phrase the Wisdom of Solomon. But why was this story included in the Biblical narrative? The Eastenders plot was designed to 'entertain', Solomon's story was recorded to show the value of wisdom and how it leads to justice. Wisdom is a virtue much prized in the Bible and many cultures, but is it prized today in our culture? We prize information, being well informed by the constant news and entertainment in every form that is available to us, but do we prize wisdom, either in our personal lives or the wider society? Other societies nurture and develop wisdom in their understanding of the world because it leads to integrity, virtue and justice in its widest sense encompassing wholesome relationships and ethical living. How do we develop wisdom? Well an old friend of mine once advised me to read a proverb a day, which may not keep the doctor away, but would nurture wisdom. The Biblical view of wisdom is based upon a right relationship with God. Perhaps we should choose at the beginning of this year to seek for and develop wisdom in our lives and in the life of our nation, and see what a difference that makes to our year.

Rev. Stuart Rason

Letter from Juliet

Dear Friends,

Lent is late this year, with Ash Wednesday falling on 9th March, and as always we will be holding a service at St Catherine's, Littleton for the whole Benefice, in which people may receive a cross of ash on their foreheads symbolizing our fallen humanity. For many of you this annual preoccupation with the sinfulness of mankind may seem old fashioned, unnecessary and peculiar, but I believe a call to repentance is as necessary now as it has ever been. To many people the church seems to use guilt to keep Christians in subjection.

I think that was partly true if we think back to the time when everyone was supposed to know their station in life and keep to it, and when the church and the 'establishment' were so strongly linked. Nowadays the church is less powerful in this country, although we still have the Lords Spiritual, the Bishops who sit in the House of Lords, but the church overall is far less influential in the political sphere than it used to be. Frankly nothing could be healthier for the church than to be on the margins of society, and to be powerless - it keeps us following in the steps of Christ.

Our society today is focussed upon achievement and success. Failure in others brings forth criticism and condemnation, while our own failure often leads to depression or despair. Intellectually we can subscribe to the notion that we all learn most through our failure, but we would prefer not to have to actually engage with that kind of learning. If you want a clear vision of how this works I suggest you watch an episode of 'The Apprentice' and see how ambitious young people, with often a little too much self confidence, fare with Alan Sugar who does not tolerate failure.

Far from being able to get it right on our own, the evidence shows that mankind continues to make all the mistakes we have ever made. Each generation, each individual must start afresh - we do not seem to learn much from history.

I came across a quote the other day from George Bernard Shaw, in the preface to 'Androcles and the Lion', he wrote: 'Why not give Christianity a trial? The question seems a hopeless one after 2,000 years of resolute adherence to the old cry of 'Not this man (*Jesus Christ*) but Barabbas.' Yet it is beginning to look as if Barabbas was a failure, in spite of his strong right hand, his victories, his empires, his millions of money and his moralities and churches and political constitutions. 'This man' has not been a failure yet; for nobody has ever been sane enough to try his way.'

When we do, we find that Lent is not about grovelling in abject humility before a judgmental God, but coming to a loving Father for the assurance of love and forgiveness, and the encouragement to try again. With love in Christ,

Juliet Montague

Confirmation

It is time to begin preparing people for Confirmation this year. If you would like to be confirmed, or have a child of secondary school age who is interested, please tell me, Stuart, Jennifer or a churchwarden. The course we run takes about ten hours, spread in a way that is most helpful to the participants.

It aims to increase your understanding of what it means to be a Christian, as well as preparing you to receive Holy Communion. Adults of all ages are welcome to join an adult group, hopefully we will also have a group for young people.

I have always accepted children for confirmation from a young age especially if they have been brought up within the family of the church and are eager to become full members. It is also easier for younger children to find time to attend a confirmation group before the demands of school and social life become too great. There is no commitment involved at this stage and tentative enquiries will be welcome.

Rev. Juliet Montague



WHERWELL CHURCH FLOWERS



I am looking to recruit a couple more people to join the flower arranging rota in Wherwell, to help keep our Church looking beautiful. The task is not an onerous one, nor do you have to be an 'expert' florist. In fact you may only have to take a turn once, or sometimes twice, a year. As the saying goes 'many hands make light work'. If you think you can help, or would like to know a bit more about it, please give me a ring on 860319.

I look forward to hearing from you

Jo Baughen

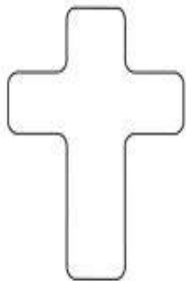
MOBILE LIBRARY

Currently the library visits:

WHERWELL - alternate Thursdays at Cottonworth on the Fullerton Road at 10.50 -11.10 and the White Lion car park from 11.15 -11.45.

CHILBOLTON – alternate Fridays at the village hall 10.10 – 11.30 and at the Cart Lane turning on the High Street from 11.35 – 12.00.





Tea @ Wherwell village hall every 2nd Sunday at 4–5.30 pm

13th February and 13th March (none in April)

Breakfast @ Chilbolton Rectory every 4th Sunday at 8.45 followed by the family service at St Mary-the-Less, Chilbolton

27th February and 27th March. No breakfast on Easter Sunday

If you would like any further information, please contact

Rev'd Stuart and Ros Rason, tel 860258 (parents of Tim, class 4) or Gaynor and Max Childs, tel 860044 (parents of Tim, class 3 and Susannah, class 1)

Downs Benefice discussion group

Are you seeking fulfilment and the opportunity to explore faith and life issues at greater depth?

If so why not join a group which will meet at the home of Alistair and Noni Lang, will be led by Rev. Bill Sykes and will draw on anthologies written by Bill, which, in turn, are inspired by what theologians, philosophers, poets, thinkers, novelists and the authors of the books of the Bible have said over the centuries. The topic for discussion is agreed by the group, and after a period of reflection is then discussed. The whole session lasts no more than an hour.

This is a framework which has brought inspiration, understanding and reassurance firstly to generations of Oxford students, from all faiths and to those of no faith, and now to groups scattered around the world. The method enables everyone to approach the topic in their own way.

If you would like to know more or to attend the first meeting of the group at 7.30 pm on 11th March 2011 at Alistair and Noni Lang's house please contact Alistair Lang at 01962 776204 or alistairlang@mac.com

Chilbolton W.I. Chilbolton Village Hall 7.30pm February 15th

Come and join other members in a convivial atmosphere. Chase away the winter blues at an American Supper. *Sue Batchelor*

Uganda visit

The October visit of Isaac, Elly, Dennis & Alber from Uganda to Andover Deanery was a great success. Thanks to all those involved who welcomed and hosted our visitors, and to the many others who contributed to the programme, or offered hospitality and car rides etc!

To build on our Link with the Diocese of Madi & West Nile, Andover Deanery would like to nominate a Link person in each Benefice who will be matched by a Link person in their link Archdeaconry in Uganda. The aim is to develop the personal contact already made and to create a small group in each Benefice to lead the links with our Ugandan partners in the Diocese of Madi & West Nile.

Planning starts shortly for a visit to Uganda in 2012 (after the Olympics!). Each Benefice is invited to nominate 2 or 3 people to visit Uganda to visit their link Archdeaconry. (In the case of the Downs Benefice, the link is with the Terego Archdeaconry, comprising 17 parishes and over 80 Churches). It is intended that the cost will be met by the individuals concerned but it is hoped that parishes may help raise funds towards their costs. We would also like to encourage young people to be included in this visit.

In the build up to the 2012 visit, the aim will be to develop our links with the Terego Archdeaconry and to come to an understanding of where our skills, ideas and resources can be applied in a practical way both before and during the visit.

For information about this exciting trip in 2012, and for further information about the Terego Archdeaconry, please contact Alistair Lang on 01962 776204, alistairlang@mac.com or Rev. Andrew Ashdown on 01264 357032.

Alistair Lang

(Downs Representative on the Deanery Overseas Committee)



GARDENS OPEN FOR CHARITY IN THE AREA FEBRUARY 2011

Sunday 20th, Monday 21st and Tuesday 22nd February

Little Court, Crawley, near Winchester. Gardens open for The National Gardens Scheme (NGS) from 2pm to 4.30pm. Admission is £3, children free. Home-made teas available. www.ngs.org.uk

Wherwell Parish Council

We were very pleased to welcome two new residents of the village together with two other members of the public and County Cllr. Andrew Gibson and District Cllr. Jim Neal to our recent meeting.

Support has been given to the planning applications for alterations to the hayloft at the Old Rectory, Church Street and for internal and external alterations to 21 Winchester Street. Permission has been granted for the conservatory at 1 Manor Cottages, Fullerton.

The PC has unanimously agreed that the parish precept remains unchanged, again this year, at £7500.

The condition of the old flint wall at the bottom of Church Street is causing concern and advice is being sought from TVBC's arboriculturalist regarding the close proximity of trees to the wall.

Several new grit bins have been placed on various sites within the parish. A further bin, to be positioned in the vicinity of the church car park, has been requested. **The grit in the bins is specifically for use on the roads and pavements/footpaths and not for use for private properties.** Please inform the PC clerk tel: 860385 if a bin is in need of a top up.

Repairs to the road sign at the Wherwell exit off the A303 together with the replacement of the bollard at the junction of the Winchester Road and the A3057 are being chased up.

Thanks to Pete Grainger and the ongoing work of Phill Jennison we are now awaiting the proofs of the local walks leaflet and the information to be included on the mapboards.

At last it does seem likely that the footpath down from Chant Close, in front of the pub, will be constructed. As the PC has to contribute half towards the £7K costs, which is nearly the whole of our annual precept, we are endeavouring to get some funding from TVBC and Testway Housing.

The playing fields committee and Santa's helpers must be congratulated and thanked that, in spite of the very seasonal weather, they raised £2k from manning the Christmas Grotto at the Andover Garden Centre. Without all the fundraising done throughout the year, by the members of what is a small committee, most of whom do not play sport, the facilities at the playing field would fall into disrepair. In spite of the recent setback caused by HCC withdrawing from the purchase of part of the site of the existing tennis courts the committee is determined to provide tennis facilities and a multisport court in the future. Joining the WPF 200 club is a one good way to support their efforts. There are monthly prizes of £25 and in June and December there are additional prizes of £200, £100 and £50.

Continued on page 10

Application forms are available in the White Lion, from me or Alan Rowles tel: 860544. Your support will be very much appreciated.

Next PC meeting commencing at 7.00pm in the Colonel Jenkins' Hall on Tuesday 15th March. Please note temporary change of date from the normal 2nd Tuesday of alternate months.

Jane Andrews. Tel: 860635 email: flyjohnandrews@aol.com

WATCH OUT! THIEVES ARE ABOUT!

Wherwell beat policeman PC Richard Jewell recently attended the village coffee morning and warned that there had been several thefts from sheds and garages in Longparish. You are advised to ensure that all outbuildings and garages are securely locked. As the price of heating oil has escalated dramatically a lock on your oil tank could be a wise investment.

The community policeman will no longer attend the village on a monthly basis. If you wish to contact the police for a non-urgent matter you should ring either 101 or 0845 045 45445.

COLLECT STAMPS FOR NAOMI HOUSE

Used postage stamps are collected by Naomi House. Please save stamps off your mail by cutting them off the envelope leaving a good sized margin. Please put the saved stamps in an envelope and either put them through the letter box of the village hall or bring them to the monthly coffee morning in the hall on the first Saturday of every month.

An invitation to all from Wherwell Wives Group

Wherwell Wives Group invite all Chilbolton lady residents and their friends to join us on February 22nd in Wherwell Village Hall at 8pm. Jane Gulliver is the Trading Standards Officer for Hampshire and she will be giving a talk on 'Rogue traders, distraction burglary and scams'. Jane herself says that it will be an interesting and enjoyable talk on a rather serious subject.

There will be a small admission fee to cover costs. Coffee, tea and biscuits served. Everyone most welcome. For more information contact Gill Granger on 860870 or e-mail gill.granger@googlemail.com

Chilbolton Parish Council

Our main concern over the past two months has, of course, been the freezing weather and how our surface water dispersal system would cope with it. And, by and large, the Council think it did pretty well. Just before the weather struck, HCC repaired several of the worst potholes and delivered six grit bins for villagers to use in dangerous places. Then the Council inspected and repaired the streams and ditches that feed water to the Common. Finally, HCC introduced a new system for reporting flooding concerns which has proved responsive. We have some things still to do – we are discussing putting a bund by the allotments to make that corner safer – but the Council feel that we are well prepared for any heavy weather which may come over the next two months. We need the rain; the volume of water in the River Test is very low indeed.

We were rather disappointed that the idea of overhauling the Neighbourhood Watch system attracted so little interest. There is an appeal elsewhere in this magazine and the commitment is modest, so, please, read the appeal and join the scheme. Towards the end of last year, there were two incidents of criminal damage and a theft from a garden shed in the village. Villagers should remain vigilant and report any suspicious activity to the Police.

The work on the Common, which was so well received at the public meeting last September, will begin shortly. When complete, the hope is it will improve the management of the increasing numbers of visitors and protect the Common. Meanwhile horse riders and cyclists have caused damage through not sticking to the bridleways and readers are asked to respect this. New signage will make it clear.

The Ramblers Association have launched an initiative using historical maps to locate footpaths which formerly existed but are no longer recognised. They are seeking volunteers and if you are interested you should contact the Parish Clerk. The Association is working with HCC Countryside Services to improve path 14 on West Down and to refresh the fingerposts.

The playing field is once again suffering from moles. This is being tackled before the pitches become unplayable. As well as this, we plan to create a grasses and wild flower area to increase interest in a redundant part of the field.

We hear that BT is installing superfast broadband in all villages but when it will reach Chilbolton is unclear. Meanwhile the Council has purchased the telephone kiosk on Grindstone Green. Also under technology, we are now putting copies of the minutes of Parish Council meetings on the village website.

Finally, careful management of our budget has enabled the Parish Council to hold the precept for the third successive year.

The next meeting of the Parish Council will be at 8 pm in the Durnford Room on 1st February 2011.

Jeremy Baines

Wherwell Christmas Fayre

The PCC of Wherwell would like to thank all those volunteers who helped with the wonderful Christmas Fayre which was held on Advent Sunday, 28th November 2010. There were wonderful stalls offering Christmas gifts, decorations, produce, as well as the chance to indulge in waffles and mulled wine. Santa's grotto was very popular with the children too!

The Fayre was followed by a 'Ponkey' (pony with donkey ears attached!) procession to the church for a wonderful Advent Carol service taken by Rev. Stuart Rason. After the service we all walked up to the White Lion where we listened to the Wherwell Singers and watched the lights being switched on. A great time was had by all! *Anna Lipa*

Poor Mobile Phone Reception?

I realise that this doesn't apply to everyone but..... if like me you have been suffering from lack of a mobile signal in either of our villages you might be able to improve it, near and in your house, depending on the handset you have. If you have a mobile phone that is capable of a standard called UMA, or you have a brand new phone, you may be able to make and receive calls and text messages via your broadband, and in many cases depending on your tariff these calls can be totally free. If you are in doubt please contact your mobile provider for more information to see if they offer this service, and to see if your handset is compatible. In my case on Orange it was free to make the change and all the calls appear as zero cost items on my monthly invoice, and the change was painless as I already had broadband setup for it, but didn't know it! I hope it works for you too, it could save you a fortune even if you have good reception.

Richard Rowles

Middy Mums



This month we are meeting on **Valentine's Day**, Monday 14th February. (It's a week early as its half term on our usual Monday) Come to the village hall in Wherwell from 12.30 bringing something edible to share for lunch. While the Mums chat and the children play it's a good time for catching up on friends and meeting new ones.

Susan Ansell 860775

SPRING BALL

7.30pm till midnight
Saturday 12th March 2011

Chilbolton Village Hall

Dress to impress and join us for an evening of fine wine, fabulous food courtesy of *Taste Catering* and live music from the fantastic *No Kando!*

Tickets only £50 each to include drinks reception and 3-course dinner

Tickets limited to 100 – book now to avoid disappointment

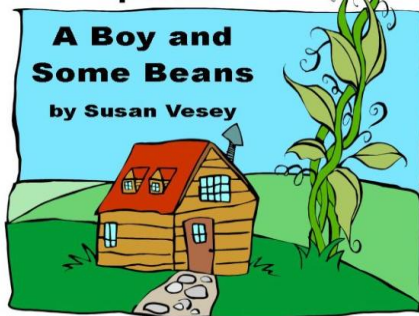
Why not book a table of 10 for you and your friends?

Tickets can be purchased from

Nina Carey-Hodges 01264 861281 or Clare Gibson 01264 860204

All profits to Genesis Research Trust, raising money for vital medical research to improve the prevention, diagnosis and treatment of devastating conditions affecting women and babies

The Somborne Players
present



Performances
Friday 25 February at 7.30pm
Saturday 26 February at 2.00pm
Saturday 26 February at 7.30pm
at
Kings Somborne Village Hall
Ticket Box Office

Andrew Flanagan – 860560

Reminder

A New NHS Dentist

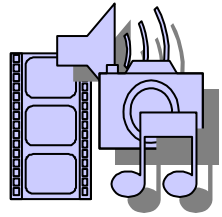


A new NHS Dental Practice recently opened in Winchester and they have a mobile unit which visits Stockbridge every Monday and Wednesday from 9:30 to 16:30, and the dates up until 4th April 2011 are on the website.

The website is <http://www.iosisclinic.co.uk/> where you can register and also book appointments. If you need to be seen as an emergency there is a contact telephone number for help with an appointment.

The Movies are back !!!

CHILBOLTON VILLAGE HALL
MANAGEMENT COMMITTEE



Proudly Present

Made in Dagenham

(15)

1968 – It's a man's world – but not for long"

From the Director of *Calendar Girls* - Sally Hawkins, Miranda Richardson and Bob Hoskins star in this entertaining account of the strike at the Ford Dagenham car plant, when female workers walked out in protest against sexual discrimination.

In Chilbolton Village Hall

on

Friday, 4th February, 2011, at 7.30 pm

Doors open 6.45 pm

Tickets £5.00 - In advance

Or £5.50 - On the door (subject to availability)

Price includes tea/coffee and biscuits

Wince and choc ices will be on sale

To book your ticket, please ring Sheila Laughton on 01264 860460,

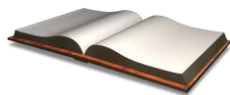
Maureen Treadwell on 01264 860380

or Beryl Lawrence on 01264 860618

Chilbolton Care Group

On 21st December another £200 was paid to the Countess of Brecknock Hospice on behalf of the Chilbolton Care Group. Once again a big thank you to all the volunteer drivers, and a happy new year to all.

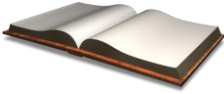
Mike Davis



Dates for your diary

February 2011

1 Feb	Chilbolton PC	CVH	8pm
1 Feb	Wherwell Fitness	WVH	9.20am
3 Feb	Mobile Library, Wherwell	White Lion	11.15-11.45am
3 Feb	Mobile Library, Chilbolton	CVH	12-12.45pm
3 Feb	Mobile Library, Chilbolton	Bannuts Farm	2.10-2.30pm
4 Feb	Film: Made in Dagenham	CVH	7.30pm
5 Feb	Wherwell Coffee Morning	WVH	10.30am
7 Feb	Red Garter	CVH	7.30pm
8 Feb	Wherwell Fitness	WVH	9.20am
8 Feb	West Down Work Party	West Down	10.00am
13 Feb	Simply Sunday tea	WVH	4.00pm
14 Feb	Middy Mums	WVH	12.30pm
15 Feb	Wherwell Fitness	WVH	9.20am
15 Feb	Chilbolton WI American meal	CVH	7.30pm
17 Feb	Mobile Library, Wherwell	White Lion	11.15-11.45am
17 Feb	Mobile Library, Chilbolton	CVH	12-12.45pm
17 Feb	Mobile Library, Chilbolton	Bannuts Farm	2.10-2.30pm
18 Feb	Wherwell History Group	WVH	8.00pm
19 Feb	Chilbolton Coffee Morning	CVH	10.30am
19 Feb	Chilbolton Horticultural Soc'y	Hillier's Arboretum	2.00pm
22 Feb	Wherwell Fitness	WVH	9.20am
22 Feb	Wherwell Wives	WVH	8.00Pm
24 Feb	Magazine collation	CVH	6.30pm
25 Feb	Kings Somborne panto	KSVH	7.30pm
26 Feb	Kings Somborne panto	KSVH	2.00/7.30pm
27 Feb	Simply Sunday breakfast	Chil.Rectory	8.45am



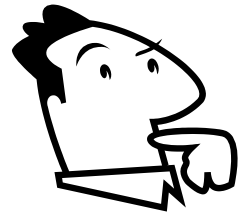
Dates for your diary March 2011

3 Mar	Mobile Library, Wherwell	White Lion	11.15-11.45am
3 Mar	Mobile Library, Chilbolton	CVH	12-12.45pm
3 Mar	Mobile Library, Chilbolton	Bannuts Farm	2.10-2.30pm
4 Mar	Film: The Kings Speech	CVH	7.30pm
5 Mar	Wherwell Coffee Morning	WVH	10.30am
11 Mar	Benefice discussion group	Winchester	7.30pm
12 Mar	Spring Ball	CVH	7.30pm
13 Mar	Simply Sunday tea	WVH	4.00pm
15 Mar	Wherwell PC	WVH	7.00pm
15 Mar	Chilbolton WI	CVH	7.30pm
17 Mar	Mobile Library, Wherwell	White Lion	11.15-11.45am
17 Mar	Mobile Library, Chilbolton	CVH	12-12.45pm
17 Mar	Mobile Library, Chilbolton	Bannuts Farm	2.10-2.30pm
19 Mar	Chilbolton Coffee Morning	CVH	10.30am
19 Mar	Jumble sale	CVH	2.00pm
25 Mar	Quiz night	CVH	7.00pm
27 Mar	Simply Sunday breakfast	Chil. rectory	8.45am
31 Mar	Magazine collation	CVH	6.30pm,
31 Mar	Mobile library, Wherwell	White Lion	11.15-11.45am
31 Mar	Mobile Library, Chilbolton	CVH	12-12.45pm
31 Mar	Mobile Library, Chilbolton	Bannuts Farm	2.10-2.30pm

Chilbolton Spring Quiz Night

Friday 25th March

Chilbolton Village Hall at 7.00 p.m.
(for 7.30 p.m. prompt start)



Tickets £7.50 (including hot supper) from:

John Temple 861334

A bar will be available for the purchase of drinks
Enter either individually and join a team on the night or as a member of a team of eight. Get together with your friends and/or neighbours and join us for this friendly event. You may even surprise yourself with what you know! There will also be a raffle and all proceeds will go towards improvements to the hall

WHAT'S ON IN THE AREA

Theatres:

01/02/11: **Ruby Wax-Losing It.** At The Lights, Andover at 8pm. Tickets £20-£21. Tel (01264) 368368 www.thelights.org.uk

03/02/11 to 05/03/11: **The Constant Wife** by W Somerset Maugham. Performances at 7.30pm (Mon-Wed), 2.30pm & 8pm (Thu & Sat, no matinee 03/02 & 05/02), 8pm (Fri) at Salisbury Playhouse. Tickets £13.50-£20. Tel (01722) 320333 www.salisburyplayhouse.com

04/02/11: **Mark Ponsford-Refugee from The Queen's Nay-Vee.** By Mark Ponsford. A programme of music and musings at Plaza Theatre, Romsey at 7.30pm. Tickets £8. Tel (01794) 512987 www.plazatheatre.co.uk

17/02/11 to 18/02/11: **Private Peaceful.** By Michael Morpurgo. Presented by Scamp Theatre & Greenwich Theatre at 7.30pm & matinee (Fri) 1.30pm at Theatre Royal, Winchester. Tickets £15 (£13 concession), Schools £7.50. Age recommendation 8+. Tel (01962) 840440 www.theatre-royal-winchester.co.uk

19/02/11: **Potted Panto.** By CBBC's Dan & Jeff. At The Lights, Andover at 2pm & 7pm. Tickets £10-£11 (concessions £9), family £35. Tel (01264) 368368 www.thelights.org.uk.

Music:

20/02/11: **The International Southern Minstrels Show 2011.** Remembering the Battle of Britain, commemorating 100 years of aviation at Southampton/Eastleigh Airport and more. At Theatre Royal, Winchester at 7.30pm (matinee Sat 2.30pm). Tickets £7. Tel (01962) 840440 www.theatre-royal-winchester.co.uk

24/02/11: **Andover Music Club – James Toll (violin) & John Paul Ekins (piano)** at The Lights, Andover at 7.30pm. Tickets £10. Tel (01264) 368368 www.thelights.org.uk.

Other events:

06/02/11: **Garden Tour.** A tour of Hillier Gardens near Romsey at 2pm. Gardens open 10am to dusk. Free with normal admission. Book in person on the day. Tel (01794) 369318 www.hilliergardens.org.uk

Country Markets:

Country Markets are held weekly in Andover and Stockbridge selling homemade and local produce. The Stockbridge market is held in the Town Hall every Thursday, 10.00am - 12.00 noon. The Andover market is held outside the Guildhall every Friday, 7.30am – 1pm

Farmers' Market Dates:

06 Feb 2011 – Romsey

13 Feb 2011 – Winchester

20 Feb 2011 – Andover

27 Feb 2011 – Winchester

For more information, please ring (01420) 588671, or visit the website at www.hampshirefarmersmarkets.co.uk.

Securing Faster Broadband for Chilbolton

In his new book *Village Britain - The Five Hundred Villages that Made the Countryside*, Clive Aslet speculates that with fossil fuel dwindling and the internet connecting us in an ever expanding variety of ways, a renaissance of rural life may be at hand. The decline in fossil fuels is an inescapable fact, and points toward the need to conserve energy and perhaps travel less. But the capacity of the internet to allow really effective working from rural locations, to deliver a whole array of services and entertainment to the home, and to offer a meaningful lifeline to those unable to travel, is not yet established. This is because the superfast broadband, which is now widely available to those living in towns and cities, is not yet available in villages and rural areas, such as Chilbolton and Wherwell. Superfast broadband offers speeds of at least 25 megabytes per second (Mb/s), and even 100Mb/s or more. To put this in context, at 50Mb/s a copy of the entire Star Wars film (legal version, not the North Korean pirate copy please) could be downloaded in three minutes. However, many people in this village may struggle to get 6Mb/s, and perhaps often find that their average speed is around 2Mb/s.

At the time of writing, Chilbolton is buried under six inches of snow and many people, unable to leave the village, are doubtless working from home - unlike the present writer who is engaged in a close study of daytime television - and will be making extensive use of their broadband connections. Faster speeds would make use of the internet for both work and leisure purposes far more effective and efficient.

The challenge is that it is not currently feasible for the private sector to bear the costs of rolling out access to superfast broadband to rural areas such as this. However, the Government recently announced it was revealed that, over the next four years, £530 million of the BBC's annual income from the licence fee will be allocated to help bring "superfast broadband" to rural areas:
<http://www.bis.gov.uk/assets/biscore/business-sectors/docs/b/10-1320-britains-superfast-broadband-future.pdf>.

The Government has said that it would like to encourage public-private partnerships - between local authorities, broadband suppliers and community groups - to bid for chunks of the £530m to help roll-out. For those that are interested in exploring access to much faster broadband.

There are a couple of ways that this can be taken forward. The first is to fill out this short survey asking about broadband speeds and from Test Valley Borough Council at: <http://www.testvalley.gov.uk/Default.aspx?page=9801>

The second is to email me at: chilboltonbroadband@gmail.com and to just briefly say that you would support much faster broadband in Chilbolton, Wherwell and the surrounding area. If we have sufficient number of replies this will enable a small sub-committee of the Parish Council, chaired by Councillor Gossling, to engage with Test Valley Borough Council and/or Hampshire County Council and to ensure that a tiny portion of the ringfenced BBC money is used to increase significantly broadband speeds in our villages and the surrounding area.

Neil Watson



The children of Chilbolton Pre-school were very busy with Christmas activities in December. They were invited to a very special birthday party at St Mary the Less church in Chilbolton. Each year, parish residents Susan and Anthony Ansell kindly host a celebration which really engages the children and gives

the true message of what 'Christmas is all about'.

Firstly, Susan and Anthony told the story of the Nativity using a 'knitted' cast of characters and plenty of audience participation. The children, parents and staff then sang some carols and festive songs, with musical accompaniment. Then on to the party games – namely 'Pass the Parcel' – with a lovely Christmas story tree decoration gift for everyone and finally, after refreshments, a balloon to go home with.

What a wonderful way to celebrate Jesus's birthday. Sincere thanks to the Ansell's for taking the time to give us this most memorable morning.

Festivities continued throughout December with the Pre-school's own Christmas production, carol singing around the tree and a party with a very special seasonal guest - Father Christmas himself!

January promises to be as eventful, with lots of new children joining the Pre-school - fun is planned for all!

If you would like your child, aged 2-5, to have the opportunity to attend this unique and beautifully situated learning environment, then please do contact us for more information or to arrange a visit.

Call 07732 095814 or 07919 130777 or email willrj@hotmail.co.uk
www.chilboltonpreschool.com

Chilbolton Neighbourhood Watch

Although we are lucky enough to live in a village with a relatively low crime rate, as mentioned in the December issue of the Parish Magazine, it is my aim, with the help of others, to promote a greater awareness of the care taken to keep it that way. Please let me know if you would like a Neighbourhood Watch sticker for your property, If you wish to receive the bi-monthly police beat report for our area, or I should be grateful to hear from the area representatives who have not yet been in touch.

Maria Watson, Neighbourhood Watch Co-ordinator.

Tel: 01264 860415 Email: mwatson.cottage@hotmail.co.uk

Chilbolton WI, January

With three new members joining us, and a past member re-joining, the WI is thriving. We were entertained this month by a local speaker, Zoë Hazell, who works for English Heritage as an archaeologist. Her expertise is in analysing plant remains. First, she explained to us the huge remit of English Heritage, and then focussed on her area of study. It was fascinating to learn how much information can be gleaned from something as microscopic as a pollen grain found in a soil sample.

Our members voted on the National WI Resolutions, topics which will be put forward for debate at the Annual General Meeting in June. Two topics, *'Encouraging the Govt to refuse planning permission for megafarms'* and *'Urging the Govt to ensure the protection of local library services'* were the two resolutions to gain the most votes.

Next month's meeting, on February 15th, will be an American Supper. Everyone attending is to bring a dish to share. The meeting on March 15th will welcome Frances Mason from the New Forest, who will talk about her Angora goats. Visitors will be most welcome. *Sue Batchelor*

Recycling

Aluminium foil is a valuable resource that cannot be separated from other materials at recycling plant. The Magpie Community Recycling Project which is run by the Andover Day Centre working with TVBC has now got yellow foil recycling bins at various local sites.

The nearest for our villages is at Chilbolton at the bottom of Chilbolton Downs near the Mayfly.

Others can be found in Stockbridge and Andover in the Asda car park or in St George's Yard car park.

Money raised from the recycling will help to fund the Day Centre for people with learning difficulties who are actually involved in the collection, sorting and pressing of the foil.

Jane Andrews

Open to the public from Friday 19th November re:refresh your inner teenager

re:refresh is Winchester's newest coffee house. Run by the YMCA for the city's young people, it's open exclusively to under 19's from 3pm Monday to Saturday. Before that, most of our customers are at school or college, so the café is open to all ages.

Come in and re:lax. Enjoy a re:viving coffee or your choice of Fair Trade re:freshments and delicious cakes and snacks with your friends. Or re:visit your youth by trying your skills on our pool tables and pc games. Wi-fi is also available in the café. You never know, you may be better than you, or your kids, think!

All funds raised are ploughed back into the Youth Café and the YMCA's programmes for the youth of Winchester. There are other ways you can help too:

- Pray for the success of the venture, the staff and the young people using the café
- Volunteer to serve in the café (all volunteers will be CRB checked)
- Donate to help fund the YMCA's youth programme
- visit www.ymcawinchester.org.uk to find out more

re:refresh St John's House, The Broadway, Winchester, SO23 9BE
Opposite Abbey Gardens and King Alfred's statue

Opening Hours :

Monday to Friday	10.00 – 14.30 all ages
	15.00 – 18.00 Monday- Wednesday under 19's only
	15.00 – 21.00 Thursday/Friday under 19's only
Saturday	10.00 – 2.30 all ages
	15.00 – 18.00 under 19's only

www.ymcawinchester.org.uk Tel: 01962 864234

Jumble Sale on behalf of Chilbolton Village Hall

Please search out all your unwanted goods for our Jumble Sale in Chilbolton Village Hall on Saturday, 19th March. Further details in March magazine.

Jane's kitchen

I made up this slice when desperate for a pudding & to use up all those leftovers from Christmas baking. Serve with cream or ice-cream.



New Year (or Desperation) Slice

Oven 180 degrees C; Tin 28 cm x 18 cm; Makes 10 slices.

For Crumble Base

75g soft butter 75g demerara sugar
1 tsp mixed spice 145g plain flour 50g oats

Topping

1 eating apple, peeled & chopped small 3 – 4 tsp mincemeat
500g mixed dried fruit (chopped apricots, sultanas, dates, cherries ,
prunes, peel, etc.) 1 tsp brandy

Method

Rub butter into flour. Add sugar, oats & spice. Press lightly into greased tin & bake for 15 minutes.

Remove from oven. Mix all topping ingredients together & spread over base. Return to oven for 15 minutes, then leave to cool in tin.

Vivien Shrimpton

Chilbolton Horticultural Society

Calling all members!

There is a change to the date in the calendar. The February outing to the *Winter Garden at Hillier's Arboretum* will now be on **Saturday 19th February**. A guided tour starts at **2.00pm**. This visit will, of course, be subject to prevailing weather conditions! Car-sharing would make sense, so contact Sheila Evans on 860697 to find out who else is going. Non-members are welcome to join us.

Wherwell History Group



An illustrated talk by
Jack Wilson

MEDIEVAL SOUTHAMPTON

At
Colonel Jenkin's
Memorial Hall

Wherwell SP11 7JJ
Friday 18th February
at 8.00pm

All Welcome
Admission £3.00
Tea/Coffee/Biscuits
included



Wherwell History Group

Our open meeting in December was a great success. The meeting was in two halves, and started with a display of items from our own archives. These have grown considerably during our first two years, with nearly thirty contributions from about twenty local people. On display were extracts from the Old School Log Book (pre 1929) with school photo & teacher Vera Rose (1919), extracts from the Guests Ledger at the White Lion (c.1914) with photographs of landlord Fred Pyke, photographs of the Wherwell Car, photographs of buildings in High Street, Church Street and Fullerton Road, and photographs of local people (Hilary Thrupp with Quilt, Cricket Club 1961 and Home Guard members).



Interval refreshments included home-made biscuits from Judith Herridge and mince pies. The second half was a display of items 'from the floor'; a veritable treasure trove which included two substantial collections of village postcards, village school group photos (c. 1934), Dublin Farm Barn (then & now), Grace Morgan and friends, a map of Wherwell (c. 1800), a souvenir BBQ lucky programme celebrating 1000 years of Wherwell Priory (987 to 1987), a souvenir

Continued on Page 25

programme for Fete Champetre (July 1989 in the presence of HRH Prince Philip to raise money for Countess of Brecknock House) with a set of souvenir champagne flutes, a ginger beer bottle (Miles of Andover) and C18th & C19th coins from a garden in Fullerton, and restoration drawings for the Church Bells. The whole evening had plenty of buzz and warmth, and by popular request we will run another Open Evening in December 2011.

Can You Help (1) ? In the photograph above, taken in 1933/34, not all the children have been identified. The front row (left to right) is complete;

Eileen Orman, Diana (Judy) Vincent, Muriel Robbins.

The back row (left to right) has three 'gaps';

William Baverstock, D Harding, ?, Ivy Annel, ?, ?, Jim Perry, W Beckingham

A clearer view of the school photo can be seen in the Wherwell website at <http://www.wherwell.net/chilbolton-and-wherwell-parish-magazines.htm>

Can You Help (2) ? In the Parish Mag for September 2010, where I was looking at cuttings from the Andover Advertiser for 1985, I asked for information about the Chilbolton Dance Group. Unfortunately, the photo is not of good enough quality for reproduction within. Here are some extracts from the newspaper article:

"The girls of Utopia, a recently turned professional dance troupe, pictured at Wherwell Village Hall where they topped the bill of 'Spotlight'. This is an annual dance event produced by Marianne Frost, a former professional dancer, and her Chilbolton Dance Group. ... The group holds classes every Sunday night at Chilbolton Village Hall and has over 50 members aged five to 21 and offers a variety of dance tuition, including rock/jazz and disco. Our picture shows Utopia, with Jackie Dunne, Nicky Geary, Joanne Lincoln and Emma Barratt"

The History Group would be delighted to hear from any reader who can give us names for the unidentified children, or who has any similar school group photographs (any decade!) from which they would allow us to take a copy. Similarly, we would be very interested to learn more about the dance group and the girls of Utopia.

Please email wherwellhistory@gmail.com

or telephone Andrew on 860 560.

Thank You.

Andrew Flanagan

The Hawk Conservancy Trust



Located in Weyhill near Andover, the Hawk Conservancy was opened in 1981 by Reg and Hilary Smith, and was originally a farm where their aims developed into the conservation of injured birds of prey. On show here are over 150 birds of prey, ranging from the beautiful Peregrine Falcon to the sinister Griffin Vulture. However this is not the extent of their work; the conservancy works with other groups to help conserve birds of prey for future generations. More importantly, the trust has been successful in re-introducing the Red Kite to North-West Hampshire and helping The Great Bustard Group by giving them enclosures to exhibit the birds – because of their help, the GBG have been able to re-introduce the Great Bustard - the world's heaviest flying bird that was once thought to be extinct - back to Salisbury Plain.

You may think this is the limit to what they do, but no. If you visit the conservancy, you can experience all ranges of activities, or even just look at the wide range of beautiful birds. If you find this a bit tedious to be doing all day – it was for me – then stop and take a look at one of what can only be described as enchanting and extravagant displays of the birds – where they display their deadly hunting instinct, soar over the audience's heads and bare their natural colours, in a way simply looking won't. The conservancy also hosts activity days and master classes, perfect if you want something a little more personal.

The owners, Reg and Hilary Smith, devised a plot of land into a charitable organisation – they bought the land in 1952 and farmed on it until 1966. From then they both developed the Weyhill Wildlife Park for injured birds, brought by the public for special care, and some were released back into the wild. Reg and Hilary both developed a passion for Raptors and with the help of their son Ashley the Hawk Conservancy was opened in 1981. Sadly, Reg died in 1995 and a further seven acres was purchased in his memory and named Reg's Meadow - a field full of natural and beautiful wild flowers - as well as being the venue for one of the Conservancy's more popular shows. Finally, in 2002, the Hawk Conservancy Charitable Trust was set up by a board of trustees, and has carried on the amazing work started by Reg and Hilary to this day.

If you want to find out more about any of the items mentioned, or just about the Hawk Conservancy itself, please visit their website at <http://bit.ly/hawksite>.

We have written this article for our GCSE Citizenship coursework – we would greatly appreciate it if you could spend a few moments of your time to take a short questionnaire about what you thought of the article itself at <http://bit.ly/HCquiz>.

Thank you.

Phill Raynsford and Geoff Ramplin

The 1st All Saints Winter Lectures All Saints Church, Upper Clatford

All Saints PCC has pleasure in announcing the first of what it is hoped will become an annual series of lectures to raise funds for the Church. In 2011, the Church plans to install Photovoltaic's in the roof of the Meadow Room, to reduce our carbon footprint and as a way of generating a long term guaranteed income stream under the Government Renewables Feed In Tariff.

The Political & background to British interventions in the Middle East

Military and political intervention in Iraq, Afghanistan and Pakistan has resulted in huge military expenditures and significant loss of life - both civilian & combatants. These wars have been variously justified as "Dealing with failing states" or "Mitigating modern threats such as 9/11 or 7/7".

7th February 2011 - 'Post 9/11 - UK political strategy in Iraq, Afghanistan and Pakistan' - *Sir Hilary Synnott KCMG*

Hilary, a resident of Goodworth Clatford, is a career diplomat with postings in Paris, Amman and India, before being appointed High Commissioner to Pakistan from 2000 to 2003, coinciding with 9/11. His final posting was as Coalition Provincial Coordinator (CPA) in Southern Iraq in the immediate aftermath of the second invasion and the removal of Ambassador Ole Wolhors Olsen, the Dane who complained of a lack of reconstruction efforts. Sir Hilary has published a book about his time in Basra called 'Bad Days In Basra'

14th February 2011 - 'The First Gulf War - what it achieved and what it led to' - *Major General Patrick Cordingley DSO DSc FRGS*

Patrick is best known for commanding the 7th Armoured Brigade - the Desert Rats - during the first Gulf War. Having had a highly successful military career spanning four decades, he retired in 2000 and has become an authoritative commentator on international affairs and has appeared on various television programmes and is a regular on BBC Radio 4. In 1996 he was appointed Military Advisor to His Majesty Sultan Qaboos of Oman. He has written two best selling books, "The Eye of the Storm" and "Captain Oates".

Venue, Time and Tickets - These lectures will take place in King Edward VII Memorial Hall, Upper Clatford, Andover SP11 7QL starting at 8.00 pm. Tickets are £10.00 for each lecture which includes a glass of wine. Speakers will sign copies of their books if available with any profit to the cause.

Continued on page 28

Tickets can be bought at Anna Valley Store or Goodworth Clatford Village Store, or requested by writing to Charles Crosthwaite Eyre at The Old Malthouse, Upper Clatford, Andover, SP11 7QL or e-mail on charles.eyre@eyreconsulting.co.uk. Cheques payable to All Saints PCC.

Charles Crosthwaite-Eyre

News from West Down

Many thanks to all of you who came to help us on the Down this month. The weather was kind with mild temperatures and occasional glimpses of sun which showed the Down at its winter best. We worked in two areas, removing sycamore scrub and cutting back the brambles, which has resulted in a large area reclaimed for the chalk grassland. I'm sure you'll notice the site as you walk through, on the downhill side of the Test Way.

Next month we will be working on the Down on Tuesday 8th February. You are very welcome to come and join us and help make a difference to the site.

Tuesday 8th February 10:00 to 15:00

Meet at the top car park at 10:00.

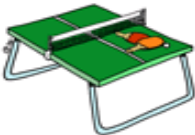
Please wear stout foot wear and gloves.

If you have them please bring loppers and bow saws.

For more information ring Lesley Key at the Countryside Service on 01962 860948 or Glynne Evans on 01264 860697

Anyone for Table Tennis?

GREAT NEWS!! Wherwell's Colonel Jenkins Memorial Hall now has a NEW Table Tennis Table...



All you need do is check availability, book a time, and you'll be given a Key Code. You can come down to the hall and play at a time convenient to YOU!

Wherwell Village Hall Bookings: Phone Julie Dickenson on 861494

Chilbolton FC – Monthly Update December 2010

Results:

21.11.10	Chilbolton FC	2	v	Chineham Athletic	4 (Cup)
28.11.10	Wallop Wanderers Res.		v	Chilbolton FC	Postponed (Frozen Pitch)
05.12.10	Chilbolton FC		v	KTF Reserves	Postponed (Snow)
12.12.10	Chilbolton FC	2	v	Tidworth Royal Res	1
19.12.10	Chilbolton FC		v	Enham FC	Postponed (Snow)
09.01.11	Chilbolton FC	4	v	KTF Reserves FC 2	(Cup)

It has been a fragmented month with two games lost to the bad weather and a loss and a win either side of them.

We faced Basingstoke side Chineham Athletic in the North Hants Cup and with a weakened side struggled to get into our usual rhythm and found ourselves 0-3 down at half time needing something special to turn the game round. Despite a much better performance in the second half with goals from Chris Logan and Hiro Niadiara, Chineham proved too strong and scored again dumping the home side out of the cup.

For the next two weeks the weather was the winner, firstly a frozen pitch at Wallop and then the snow came down and the Chilbolton playing fields were mostly covered by snow making it impossible to play.

Despite the cold weather continuing the home game against Tidworth went ahead with a delayed start and it proved to be worth the effort as we took all three points with a hard fought 2-1 victory. Goals from Ollie Southworth and Steve Jenkins either side of half time ensuring that we stayed second in the league.

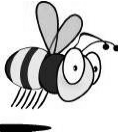
The final game of 2010 was cancelled again thanks to the snow but we restarted on the 9th January 2011 and did so in style with a 4-2 victory in the Martin Turner Cup against KTF Reserves. Despite going behind early on Chilbolton used the long throw to great effect with Steve Jenkins heading home to go into the break 2-1 up. Second half goals from Luke Donovan and a superb free kick from Ollie Southworth saw us through to the next round.

Are next home game is not till the 30th January but all fixtures on the website (www.chilboltonfc.co.uk) so come down have a cup of tea/coffee and cheer us on then come down to the Mitre to talk over the game with the team over a pint. I hope you all had a good Christmas and a very Happy New Year from the team and management!!

Sam Horne



Bee Diary February 2011



The snow through December caused the local green woodpeckers to take an unhealthy interest in beehives, and holes started appearing. Normally the woodpeckers would be fully engaged in drilling your lawn during the winter, but not in times of snow and heavy frost. For the bees, all wrapped up snug and warm under their duvets, the arrival of a pneumatic drill can't have been restful, and the disturbance to the clustering colony is potentially as serious as the damage to the hive. Thankfully, John Fry set to in the frost to cover all 25 hives with chicken wire, and this has done the trick with no further attacks so far.

All our hives are now equipped with wire mesh Varroa floors and removable trays below which collect the debris, and dead mites, that fall from the clustering colony of bees. Inspecting the fallout on these trays through the winter is a good way to judge how strong the colony is and how it is surviving the winter. Bees don't seem to mind the cold. As long as the hive is draught free and dry, they can survive long periods of sub-zero temperature.

During the cold weather, the bees form a tight cluster covering several frames. The temperature inside the cluster is maintained by a number of "central heating bees" which shiver excessively and consume more honey than the others, but radiate heat. As the queen starts her programme of spring egg laying, the central heating bees maintain the temperature within the cluster at 35° C, to enable the eggs to hatch and the young larvae to grow. By early February, in colonies with young viable queens, the brood nest is expanding and the bees are quite literally converting stored honey and pollen into young bees. The bees' ability to expand the colony in cold springs depends upon a heavy store of food gathered the preceding summer and enables them to dominate the nectar gathering in April and May with expanding colonies of young bees. Wasps by contrast over winter individual queens only and it is not until high summer that they become a pest.

For beekeepers, February is a time for holidays and equipment repairs. It is between now and April that the vast majority of colony losses occur, as old bees die and the ability of the colony to maintain a heated cluster breaks down. As long as the hive has plenty of stores, there is not much the beekeeper can do but hope and pray they will make it through to spring.

Jolyon Pope

Chilbolton & Wherwell Wildlife

Throughout the year, I try to input to the appropriate recording schemes all my records of birds, moths, and butterflies. But year-end is a time when I try to sweep up the miscellaneous bits and pieces – interesting wildlife that I just happen to have seen during the year, but not part of my routine recording effort.

Examples this year included a relatively rare fungus at Broughton, and an interesting tree at Leckford. I discovered the tree in April and because I didn't recognise it, I photographed the flowers. Then by coincidence, the County Flora Recorder also quite independently came across it, and was also puzzled!

When he told me about it, I sent him the photo of the flowers, which he in turn forwarded to a national expert. The tree has now been identified as a North American Red Maple – *Acer rubrum*. It's not that unusual as a parkland tree, but not something to be expected in ordinary countryside. We suspect our specimen was probably planted by John Spedan Lewis when he lived at Leckford about sixty years ago.

I also try to collate all my notebook records of mammals, and forward these to the Hampshire Wildlife Trust. The Trust is always pleased to have these records – especially of Brown Hare because it is a national Biodiversity Action Plan species, and said to be increasingly rare in some parts of England. Fortunately, the species continues to be widespread, and fairly numerous in north-west Hampshire.

Slightly less welcome are the increasing numbers of Muntjac deer that I'm seeing. The Muntjac is a very secretive animal that looks more like a dog than a deer. Twenty years ago I hardly saw any in this area, but now my sightings of them are becoming fairly frequent. So watch out for any roses in your garden; the Muntjac think they're a delicacy!

Finally, I'll quickly mention that we'll be meeting again soon for some more important conservation work on the chalk-slope of West Down. Details are elsewhere in the magazine, but do come along if you can. The work-party sessions are on second Tuesdays of the month – 8th February and 8th March.

Glynne Evans
hantsbto@hotmail.com