

## Chilbolton and Wherwell Community Magazine

One of the final jobs that falls to the magazine team is to write a few words of introduction. Being original is always a tough call at the end of a hectic production process. This month, however, the magazine speaks for itself so there's no need to try! This bumper issue not only features our regulars and all the news about what's happening in the villages, but there are several fascinating articles that will undoubtedly capture your interest. Thank you to those who have turned journalist this month – as the magazine doesn't employ roving reporters we rely on your contributions to add variety and make the magazine a 'good read'. Someone whose contribution must be singled out is Marion Gilmour. After many years of unstinting involvement on the magazine committee and production teams, Marion is standing down to attend to her many other commitments. She will however, still be compiling the What's On section that she started when the magazine had a revamp. Thank you, Marion, for being such a great member of the team, for all your hard work, for your inspirational perseverance with new technology, and, of course, your wonderful cookies!

*Victoria Ramsay*

Thank you to Tessa Youell, Victoria Ramsay, Euan Ramsay and Ed Treadwell who produced this month's magazine.

**CLOSING DATE FOR COPY: 15<sup>th</sup> of month**

**See Diary Dates for magazine collation day**

**For all enquiries, our contact email is [cw.magazine@hotmail.co.uk](mailto:cw.magazine@hotmail.co.uk)**

# Church Matters

## The Downs Benefice

The Revd Juliet Montague, BTh (normal day off: Monday)

Curate: The Rev'd Stuart Rason, The Rectory, Chilbolton Tel: 860258

---

### From the Parish Registers:

#### Chilbolton

Baptism	8 Aug	Charlotte Eleanor Booth
Wedding	15 Aug	David Cusworth & Angela Walker
Wedding	5 Sept	Murray Kernohan & Lindsay Horne
Funeral	28 Aug	Derek Coggins; Freddie Blakemore
Burial of Ashes	12 Sept	Nancy Anderson

#### Wherwell

Funerals	28 Aug	Edward (Ted) Daubney
----------	--------	----------------------

### October Flower Roster

#### St Mary the Less

Beryl Lawrence

Dawn Rickatson

#### St Peter and Holy Cross

Mrs Rowles 3<sup>rd</sup> & 10<sup>th</sup>

Mrs Ansell 17<sup>th</sup> & 24<sup>th</sup>

Mrs Whiteside 31<sup>st</sup> Oct & 7 Nov

## Church Services October 2009

	St Mary the Less Chilbolton	St Mary's Crawley	St Catherine's Littleton	St Stephen's Sparsholt	St Peter & Holy Cross Wherwell
<b>Sunday 4 October The Seventeenth Sunday After Trinity</b>					
Holy Communion	8.00am		8.00am		
Family Communion				10.00am	
All Age Worship			10.00am		
Morning Worship		10.00am			
Harvest Festival					10.00am
Evensong	6.00pm				
Service of Peace & Healing			6.00pm		
<b>Wednesday 7 October</b>					
Holy Communion			9:30am		
<b>Sunday 11 October The Eighteenth Sunday After Trinity</b>					
Holy Communion				8.00am	
Family Communion		10.00am			
Morning Prayer with children's activity	10.00am				
Welcome Worship				10.00am	
Harvest Festival			10.00am		
Evening Communion					6.00pm
<b>Wednesday 14 October</b>					
Holy Communion			9.30am		
<b>Sunday 18 October Luke the Evangelist</b>					
Holy Communion		8.00am			
Family Communion			10.00am		
Family Service					10.00am
CW Holy Communion with REME	10.00am				
Harvest Festival				10.00am	
<b>Wednesday 21 October</b>					
Holy Communion			9.30am		
BCP Holy Communion	10.30am				
<b>Sunday 25 October Bible Sunday</b>					
Holy Communion					8:00 am
Family Service	10.00am				
Family Communion			10:00 am	10:00 am	
4 <sup>th</sup> Sunday Worship		10:00 am			
<b>Wednesday 28 October</b>					
Holy Communion			9.30am		

## Pause for Thought

THE RECTORY,  
LITTLETON

Dear Friends,

A slightly frustrating advantage of driving between our villages is that I can listen to Radio 4, but never a whole programme! That was how I came to hear an interview with Kenny MacAskill, the Scottish Justice Minister, in which he was being asked about the reasons for the release of the Libyan, Al Megrahi. MacAskill said that Megrahi would soon be under a higher judge than us, which brought forth an immediate response along the lines of: 'So do you think his cancer is God's judgement upon him?' This wilful misinterpretation is offensive, not only to the many victims of serious illness but to God himself. The King of Love could not behave that way. The sufferings of this world fall upon good and bad alike.

When it comes to the release of Al Megrahi, it seems to me that prison has three purposes: - to protect the public from danger; to rehabilitate an offender; and to allow a person to pay their debt to society. These all become irrelevant when the prisoner's life will end in a few weeks or months, as is also the case with Ronnie Biggs the 'great train robber'. Mr MacAskill was right in saying that they will then come before a higher judge than us. But when we look forward to the day of judgement for people like this, we need to remember that we are all accountable for our lives and our actions, and we can be truly thankful that God is compassionate and merciful. Sometimes it seems as though we are very grateful for his forgiveness for ourselves and those we love, but rather less so for those we feel deserve punishment. That is nothing new. When Jonah had called down God's vengeance upon the corrupt people of Nineveh, only to find that God forgave them when they repented, he sat down under a tree and sulked.

What God chooses to do with Ronnie Biggs or Al Megrahi when they depart this life is not our concern, but the healing power of compassion is. Anything that helps to bridge the great gulf of fear and mistrust between people and nations has to be a good thing, and certainly in the case of Al Megrahi. His release as an act of mercy in his last days may do something to redeem the tragedy of the Lockerbie bombings, may indeed find a way to bring love out of hate, and that must surely be God's will.

*With love in Christ,  
Juliet Montague*



## Exciting Observatory developments

I'm delighted to bring you up-to-date about some exciting new research activities that are planned for the Chilbolton Observatory.

As those of you who were able to join us for our 40th anniversary Open Day in 2007 will know, the Observatory is part of the Science and Technology Facilities Council (STFC); a Research Council with responsibility for promoting and supporting high-quality scientific research.

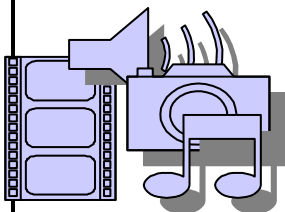
Over the next few months there are plans to install new equipment for two projects - one that will enable scientists to improve weather forecasts and another that will provide a new way to study the universe. The Met Office plans to install a wind profiler that transmits pulses of radio waves up into the sky and then uses the reflected signals to analyse wind speed and direction at different heights. This profiler will work alongside other equipment already at the Observatory to enable more accurate forecasts of severe weather. The second project, LOFAR (LOw Frequency ARray), will see two antennas constructed that will form part of a European telescope network which will receive radio waves from a variety of sources in our Universe including galaxies, pulsars and stars. Observations from LOFAR, which will be commissioned in spring 2010, will enable scientists to address some of the key scientific questions about the formation and evolution of the universe.

We hope to start constructing both facilities in October and expect it to take a few months. You shouldn't notice any great increase in the amount of traffic moving to and from the Observatory, though plant vehicles will be needed to undertake necessary site preparation. We anticipate minimal inconvenience to the community and hope to provide you with an opportunity to visit the Observatory to discover more about these projects once the equipment has been installed.

*Charles Wrench STFC*

### Cover Photograph

Thank you to Bryan Cox from Chilbolton for the lovely autumn scene that he photographed.



CHILBOLTON VILLAGE HALL  
MANAGEMENT COMMITTEE  
Proudly Present

## Morris – A Life with Bells<sup>(12A)</sup>

An ambitious and beautifully made comedy 'mockumentary' about a Morris dancer and his team, struggling against the monolithic forces of the National Morris Dancing Circle which wants to stamp out any diversions from the norm. Cast includes Greg Wise, Harriet Walter and Derek Jacobi.

In Chilbolton Village Hall

Friday, 6<sup>th</sup> November, 2009 at 7.30 pm

Doors open at 6.45 pm

Tickets £5.00 - In advance

Or £5.50 - On the door (subject to availability)

Price includes tea/coffee and biscuits

Wine and choc ices will be on sale

To book your ticket, please ring Maria Watson on 01264  
860415,

Sheila Laughton on 012364 860460, Maureen Treadwell on  
01264 860380, or Beryl Lawrence on 01264 860618

## Chilbolton Parish Council Report

Your Council met on 1st September after its summer break. They heard that the road between Chilbolton and Wherwell had now been repaired, as had the severed pipe in Joys Lane, which should improve surface water drainage during heavy rains. Meanwhile, on the Common, the ragwort pull and the thistle cut had been completed satisfactorily and the river cleared to keep the water flowing.

The Council has met with the staff of the Observatory. Over the years the fences defining MOD land have fallen into disrepair, allowing walkers to roam freely around the Observatory. These boundaries are to be repaired or replaced which will inevitably constrain walkers. The Observatory will be putting a notice in the Community magazine in due course.

The Playing Field Committee told the meeting that a new football team was now using the second pitch and that plans are now in draft to upgrade further the pavilion.

TVBC Planning Department came to Chilbolton to brief the Council and Wherwell Parish Council on proposals to review the rules governing development in the villages of Test Valley. Across the Borough there are villages which are in decline, evidenced by a fall in population over the past three decades and TVBC need to establish whether existing planning laws are flexible enough to offset this. The project will not be complete until the end of 2010 and further bulletins will be published as new information becomes available.

As for the proposed Play Area, responses to the Questionnaire showed support for facilities for the 4-8 years age group, with the Hall area the preferred location. The Council are now drawing up plans to take this forward. Meanwhile work on the allotments has been completed and three new tenants have applied. We are grateful to Mr Baz Hook who has offered a sizeable donation of stable manure.

Finally, it has been brought to the attention of the Parish Council that once more, speeding and dangerous driving have become a feature of life in the village, in particular along Drove Road and Little Drove Road. Could I please entreat all users of these roads, as well as other roads through the village, to exercise caution before we have a serious accident. The Council are discussing options with the HCC Road Safety Committee, but the best one lies with all road users acting responsibly.

**The Council will next meet at 8pm on Tuesday October 6th.**

*Jeremy Baines, Chairman, Chilbolton Parish Council*



## WHERWELL PRIMARY SCHOOL PTA NEWSLETTER - OCT 2009

---

### **Welcome Back**

Hi all, and welcome to the first PTA newsletter of the new school year. Welcome especially to all the new parents. Hopefully your children (and you!) are settling into the school routine.

### **Saturday 3<sup>rd</sup> October, 9.30am**

Fancy some fresh air? The woodland pond is drying up due to the extensive vegetation, so we need some volunteers to help clear the pond. Open to all - just come along on the day.

### **14<sup>th</sup> October: Open Morning for Existing & Prospective Parents**

The school will be hosting an open/coffee morning for all parents whose children currently attend the school and for all potential parents that would like to register their children here. Further information to follow – so watch your book bags!

### **Easy fundraising**

This is an easy way to raise money for the school – we now have 27 members and have so far raised £79.93. So thank you to everyone who has shopped through this site.

### **AGM: Monday 12<sup>th</sup> October, School Hall, 7.45pm**

Would you like to help raise money to benefit your children, and have some fun at the same time? Everyone is invited to come to the AGM to see what has happened over the past year. Without new members the PTA will not be able to function. Why not come along and see if you are able to help in any way - come along for a drink and some nibbles. Hope to see you there.

*Clare Gibson*

### **WHERWELL PRIMARY SCHOOL**

### **OPEN MORNING FOR PROSPECTIVE NEW PARENTS**

**Wednesday 14th October 2009**

**Are you looking for a school for your little one?**

**Come and have a tour of Wherwell Primary School.**



Please contact the school for further details – 01264 860384

CANTORIAN MADRIGAL  
ELISABETHAIDD



ELIZABETHAN  
*Madrigal*  
SINGERS

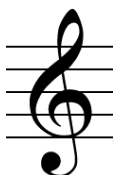
## Elizabethan Madrigal Singers & Wherwell Singers In Concert

**Saturday 3rd October, 7.30pm**  
**St Peter & Holy Cross Church Wherwell**

This collaboration between the 2 choirs will celebrate music of the 16th century, including Allegri's famous Miserere and Byrd's Mass for 4 Voices. We will also sing Welsh folk songs, madrigals and part songs

Tickets: £6 (£4 concessions), available on the door, from Dale Webb (860074) and the White Lion pub  
Refreshments will be sold in aid of Wherwell church roof appeal

Tickets are already selling fast, so please get yours early!



## Choirs of the Downs Benefice and Lydia Morrell on the harp Saturday 17th October, 7.30pm St Peter & Holy Cross Church Wherwell



This is a fundraising concert in aid of Wherwell's church roof and is supported by all the choir of the Downs Benefice. Please join us in our efforts to raise money for a new church roof.

Tickets: £5. Family ticket - £15. Available on the door

## **The Wherwell History Group**

### **The Churches Conservation Trust in Hampshire**



The Churches Conservation Trust is a national charity which cares for over 340 historic churches no longer required for regular worship. Nine of these are in Hampshire. Dr Frances Hurd will give a brief account of each of these, and also describe the work of the Trust and some of the challenges involved in caring for these wonderful buildings.

#### **ST MARY'S, ASHLEY**

There is no mention of Ashley in Domesday Book, and it is almost certainly a Norman settlement in its present form, although Roman and prehistoric material have been found in the locality. This early 12th-century church probably originated as a chapel for Gains Castle, the Norman fortification within whose outer earthworks it stands.

There are sixteen other early Norman castle sites in Hampshire, but this is the only one with a church within its boundaries. Its construction of flint rubble covered by rendering is typical of a small Hampshire country church, making use of surrounding materials, although it has worked stone at the corners.

It is one of three churches close to Kings Somborne which are now vested in the Churches Conservation Trust, the others being St John the Baptist, Upper Eldon (unusually positioned in the middle of the lawn of Eldon House) and All Saints, Little Somborne, at the gates of Somborne Park. While all three are small country churches, they all have their different points of interest, which will be described in a talk to the Wherwell History Group on October 16th at 8.00 pm in Wherwell Village Hall, Church Street. Guests welcome, admission £3, tea/coffee & biscuits served after the talk.



## Moving to Dancing Ledge

We were asked to write about our move to Wherwell, so here are a few thoughts.

When we first moved to Hampshire seven years ago, we got very close to moving into a house in the Fullerton Road, Wherwell, a few doors from Joyce's aunt, Grace Morgan. However for various reasons, we decided to rent a house in Chilbolton while we continued our house search – hence our link with the church there, a link which continued even during our six years in Goodworth Clatford.

Amazing Grace, as she became known, died in January this year and as the house and village have so many fond memories for both of us (especially the large family reunions every summer), we felt that we should attempt to keep the house in the wider family. Dancing Ledge, as we have since discovered, plays host to all sorts of gatherings and we thought that it would be good to keep many of these traditions going. We hope we shall be as welcoming as Grace was.

Buying and selling houses in one of the worst recessions for decades was bound to be quite a challenge, but after the usual hiccoughs both our sale and purchase were secured. Parts of Dancing Ledge are over 200 years old and originally it was three cottages. Then it became a shop and bakery before being converted into a house. The name, if you are not familiar with the Purbecks, stems from a large sea-water rock pool near Swanage.

We do not underestimate the amount of time and effort we will need to put into the property, but the rewards of living in the heart of this lovely village where we already know many friendly people will be great. Of course, people in Chilbolton have made us very welcome over the past few years and we are pleased to be finally living inside the Benefice.

Our children and grandchildren, some of whom had initial concerns over upsizing at our age, are looking forward to visiting and staying. We are sure that many others will also be invited to the house but early guests may well be given a paint brush or wall-paper stripper – you have been warned!

*Michael and Joyce Payne*



## Patrick Pirie-Gordon's Desert Island Hymns

On Sunday 6th September, I was privileged to be Roy Plumley at the Church to Patrick Pirie-Gordon's Castaway in a programme of Desert Island Hymns, which a good number of you attended.

Everyone knows Patrick Pirie-Gordon as a 30-year resident of Chilbolton, sometime Churchwarden, and choir member renowned for his commanding voice (and, famously, for going up in flames one Sunday in the choir stalls when his surplice had an argument with a candle!) Not so many, however, know the Colonel Pirie-Gordon who was a distinguished banker; is a member of Her Majesty's Royal Company of Archers; a Freeman of the City of London and Past Master of the Worshipful Company of Skinners – and the 14th Laird of Buthlaw, in a family line of Scottish lairds dating back to 1664.

Patrick was born in 1918, as the war was drawing to a close. He attended prep school in Seaford in Sussex, going on to Winchester College and subsequently to university at Oriel, Oxford. The Second World War interrupted his studies, although he was awarded his MA after the war, and he was commissioned into the Army as a Gunner/Surveyor in 1938.

He had an eventful war, having been evacuated from France in 1939, not having slept for a week. In early training he found it was a requirement for an officer to learn to ride a horse (the horse responding to instructions in Flemish, thereby adding to Patrick's language skills!) This was an accomplishment which he fortunately never had to apply in action. A particularly significant event was being billeted as a Major on a certain Mrs Grace Colebrooke, a widow with three young children. In 1947, he and Grace were married and began a very long partnership.

One of Patrick's last military duties was a posting to India in 1947, when as a colonel he was charged with putting down a mutiny by sections of the Malabar Special Police, which of course he did quietly and efficiently, unarmed and single-handed.

After the war Patrick took up a career as a banker, becoming a director of the private bank, Glyn Mills & Co in Whitehall. The family grew up in Woking, where Patrick and Grace lived until his retirement, when they decided to move to the country and quickly settled in Chilbolton, first at Down End and then in Paddock Field.

The Pirie-Gordons have a fascinating Scottish family history. Patrick's branch of the Gordons trace their family tree back to 1537, with the Piries joining some 200 years ago.

*(Continued on page 13)*

The family lands, comprising of a number of farms, from 1664 brought with them the rights and title of Laird of Buthlaw; and although part of the land was commandeered by the Government during the war, Patrick became the 14th Laird.

The family has a colourful past, including one member who was prosecuted in 1715 for praying for James the Eighth. Patrick is one of a line of Pirie-Gordons appointed as a member of Her Majesty's Royal Company of Archers, the Monarch's ceremonial bodyguard in Scotland. Being armed with a bow, Patrick does admit that he might have had some difficulty with a determined terrorist attack – but points out that his Roman short sword would have allowed him to deal with any such minor difficulties in one way or another!

Among his many other honours and achievements, Patrick is a member of the Worshipful Company of Skinners, one of the oldest of the London Guilds, having been a Liveryman for seventy-three years and an eminent Past Master.

Perhaps one of his most intriguing achievements, however, is to have a glacier in the Antarctic named after him– the Gordon Glacier in the Shackleton Range. For quite some years Patrick was Hon. Treasurer of the Royal Geographic Society, and played a large part in organising a number of major expeditions to both North and South Poles. Patrick knew explorers such as Sir Wally Herbert and Sir Vivien Fuchs very well, and as Patrick said, he is happy to have the distinction of leaving a substantial mark on the Antarctic without once having to get his feet cold!

On the night, Patrick and I had to compress over 90 years into an hour – but we managed it! He chose, as you might predict, four traditional hymns for us to sing together (rather loudly) – Guide Me O Thou Great Redeemer; I Cannot Tell; Abide With Me; and Jerusalem, and the choir sang beautifully a piece Patrick is fond of from his school days. The book he chose to be cast away with was “Kim” by Rudyard Kipling (“it has all of India in it”), and his luxury was a box of Thorntons dark chocolates.

*Andrew Kent*



### **Freddie Blakemore**

Please accept my sincere thanks to all friends and neighbours who have provided me with such wonderful words of comfort and acts of kindness following the loss of my husband. I particularly want to thank the two Parish Councils and the WI for their understanding during this difficult time. I have appreciated so much the help and support I have received and it is giving me much strength and encouragement to cope. Thank you. *Liz Blakemore*



## **CHILBOLTON VILLAGE QUIZ**

(In aid of the Hampshire Air Ambulance and  
the Village Hall)

**FRIDAY 23th OCTOBER**

To be held at the Chilbolton Village Hall  
Doors open 7pm and quiz starts 7.30pm

£7.00 per person inc. hot meal  
(please bring your own drinks, glasses and puddings)

Make up a maximum of eight per team, and to assist in catering  
requirements, please book your place:

Telephone Mary/Graham on 01264-860795

### **Chilbolton Village Hall**

The AGM of the Chilbolton Village Hall Management Committee will take place on the 9<sup>th</sup> of November 2009 at 8.00pm.

Last year we were fortunate to have three new volunteers join the Committee. Two of our numbers will be moving out of the village later this year. If you would like a challenge, can turn your hand to small repairs and maintenance, work with a great team, fund raise and help run a fantastic facility for the community. Please contact John Temple on 861334 or any other committee member. Our task is so much easier with a large group of volunteers.

By the time you read this month's magazine you would have noticed that the hall has been completely redecorated. My thanks go to 'Painters Direct', for all their hard work and cooperation in working around other contractors, hiring's and to complete on time. They also gave assistance in refitting the embroideries.

On behalf of the committee, I would like to thank all those who have been unconvinced during the Stage Project. It has lasted longer than was planned but I hope you would all agree that the new facility will be a great asset to the Community. Our thanks also go to Jim Dunne (Stage Project Manager). Without his leadership, drive and technical knowledge you would not have the stage. Well-done Jim.

*Anthony Bliss*



## Play Survey Results

Five hundred leaflets were printed and delivered to local residents in Chilbolton during July with responses by mid August. By the closure date, 73 responses had been received which is a 14.6% return. It must be noted that some people gave more than once choice for the location of the play space and all results were recorded in order to give a fair reflection of all views.

### Results:

*Q: Do you support the provision of a play facility for 4-8 year olds?*

For	63	Against	9
-----	----	---------	---

*Q: Where is your preferred location?*

Village Hall	39	Test Rise Green	9
Playing Fields	29		

*Q: Other locations put forward:*

Coronation Oak site

Rear right hand corner of village hall is this is only site available

*Q: Would you prefer we support additional equipment for Wherwell play facility?*

For	16	Against	46
-----	----	---------	----

*Q: Would you be prepared to be part of a committee?*

Yes	15	No	58
-----	----	----	----

A number of responses included comments stating that the village should be more child friendly and that we should have our own play facilities.

In the coming months those people who expressed an interest in being part of a committee to facilitate a play space in Chilbolton will be contacted to arrange an initial meeting. This committee will then prepare proposals for presentation to the Parish Council based on the results and comments received, and they will look into sources of funding. In the future it is the intention of the Parish Council to then have a demonstration of the short listed scheme(s), for the village to view and provide comment before proceeding to commissioning the play space. Obviously there is still no guarantee that we will be able to achieve the desired outcome, but be assured all endeavours will be made to make this a success if at all possible. Further articles will be published to provide villages with updates on the progress of the committee. In this way the committee will maintain engagement with the community throughout the project.

*Cllr Picco, Chilbolton PC*





Campaign to Protect  
Rural England  
HAMPSHIRE

## **CPRE Test Valley District Group**

**Invite you to**

### **‘An Evening with Birds’**

**at The Hawk Conservancy Trust  
Sarson Lane, Andover SP11 8DY**

**on Wednesday 21st October 2009**

The past two years have seen CPRE Hampshire hold very successful talk and supper evenings at Longstock Village Hall, which have been enjoyed by members and their friends. This year we have something a bit different planned – a private visit to the Hawk Conservancy Trust for an evening supper, flying display with bird handling, and an illustrated talk on the Great Bustard’s re-introduction to the UK.

The evening starts with a two-course supper in Duffy’s restaurant, followed by an illustrated talk by David Waters of the Great Bustard Group, to be held in the comfort of the newly-refurbished Griffon Room. In 2004, David was responsible for the re-introduction of the Great Bustard on Salisbury Plain and gives a very entertaining talk about the project, trips to Russia to collect young chicks, and the trials and tribulations of releasing young birds on the plain. There will also be an opportunity to sign up for a private visit to the secret release site, where you should be able to see these amazing birds in a completely natural setting. (Fee payable).

After the talk, we will move outside (ensure you have warm clothing!) to the illuminated woodland arena to watch an ‘Owls by moonlight’ flying display, with an opportunity to handle some of these beautiful birds.

The cost of the evening is £25 for CPRE members, £28 for non-members. This includes entry to the Trust, a two-course meal, and the illustrated talk, followed by the flying display and bird handling.

For tickets to this event, please telephone 01962 843655 or email [admin@cprehampshire.org.uk](mailto:admin@cprehampshire.org.uk)

*Please Note:* Numbers are strictly limited, so please book early.

Alternatively, if you are unable to come but would like to make a donation, you can send a cheque, payable to CPRE Test Valley, to CPRE Hampshire, Beaconsfield House, Andover Road, Winchester, SO22 6AT. Your donation will be used to help fund the work being done by your local group to preserve and protect our local Test Valley environment.

*John Cooper Test Valley DG Chairman 2009*

## The Wherwell History Group



It is many a year since the walls of Wherwell echoed to the jingle of harness, the rumble of iron-shod wheels and the cheery tootle of the coach-horn. But they did on Wednesday 26th August when the “Nimrod” coach and a team of four great black horses rolled to a halt in the yard of The White Lion.

*The ‘Nimrod’ at Wherwell*

This was not part of a film or TV advertisement but a group of friends who share an enthusiasm for and an interest in four-in-hand coaching and who each year take a two-day journey to celebrate the pleasures of coaching and keep alive old traditions. This year the journey started at Kings Somborne, via Horsebridge and Houghton to Stockbridge on the first day: then from Stockbridge through Longstock, Testcombe and Chilbolton to Wherwell and back to Stockbridge via Longstock, stopping at all available hostelrys and the River Test Smokery to collect lunch.

The coach, owned by John Brown of Leigh in Kent, was built in 2005 to the pattern of an original 19<sup>th</sup>-century Road Coach. Before railways, these were the equivalent of today’s trains and buses – infinitely more glamorous and probably less comfortable ! John drives the coach with his team of Gelderlander horses at County Shows. In previous years he has won the coaching class at Royal Windsor and The Royal County of Berkshire Show. For those who saw us, I hope we raised a smile and gave a glimpse of how things might have been.

*Colin Pawson  
(Guard to the ‘Nimrod’)*

Photograph provided by courtesy of David Lowman



Wherwell Christmas Fayre  
Sunday, 29<sup>th</sup> November

## CAKE STALL

*Please donate cakes, pies, cup cakes, breads, chutneys, jams,  
or whatever your baking speciality...*

*Bring to the Wherwell Village Hall  
between 12:30pm and 1pm on Sunday, 29<sup>th</sup> November*

*Thank You Very Much!! Judy Conte: 860 789*

## Advertising

October marks the beginning of a new advertising year for the Magazine. Once again some of the previous businesses have decided not to renew for a variety of reasons, however there have been more than enough new advertisements to fill our pages and I have already had to start a waiting list.

The income from these advertisements pays for the Magazine to be produced and enables it to be provided each month free of charge to about 750 households. Please do have a good look through to spot the new advertisements and remind yourself of the huge variety of services on offer. And if you do choose to use someone then please do let them know that you saw their advertisement in the Magazine

During the year we are able to include flyers for a charge of £25 - normally up to two per issue - for which we need 750 copies a couple of days before collation is scheduled. It's always better to reserve a space in advance by emailing or ringing me.

A big thank you to all our advertisers and also to Bulpitt Print for their flexible and cheerful support, whilst organising the various copy from the eighty different businesses.

As always, if anyone has any questions or comments relating to advertising then please do get in touch.

*Barbara North*

Tel: 860766 or [barbara.north@talk21.com](mailto:barbara.north@talk21.com)



## Derek Coggins

Sheila Coggins and family wish to thank everybody for their cards, flowers, letters and support during this difficult time. Thanks also to all those who attended the funeral. The donations to the Countess of Brecknock Hospice Trust in memory of Derek, have been greatly appreciated.



### ***Hello Pud-Swan* by B.D.B. (Bryan Beggs)**

#### **A Unique Children's Book**

Thanks to the generous 'spreading of the word' last autumn by editors of over a hundred parish and village magazines, Naomi House Children's Hospice has now received £2000 from the sale of this newly-published storybook for children, by Andover author Bryan Beggs.

*Hello Pud-Swan* (a three-part set) is a story with a difference, which aims to capture the imagination of readers aged from 7 – 10 years, in an INTERACTIVE and EDUCATIONAL way. Topics of geographical, historical, scientific, and cultural interest are woven into the storyline, as are the 7, 8 and 9 times mathematical tables!

In each of the three books, there are pages for a reader to do his or her own illustrations, encouraging imagination and creativity and making the book personal and special to each individual child. 'It makes an ideal present.'

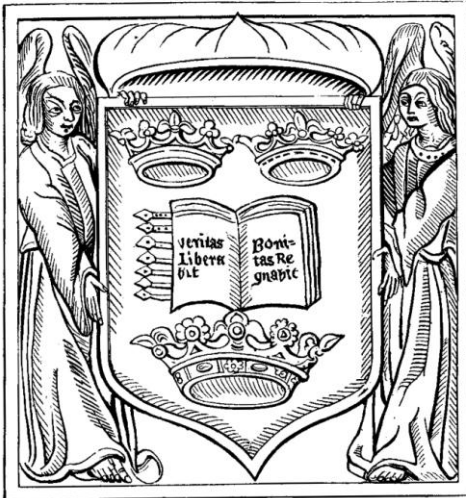
All information can be found on the book's own website [www.pud-swan.org](http://www.pud-swan.org). However, *Hello Pud-Swan* may be ordered from all well-known bookshops or directly from the publisher, T.V.C. Book Society in Andover, (01264) 365190. The complete 3-part set in a slip-case costs £20, or each part may be bought separately for £8.99 each.

# Wherwell History Group



An illustrated talk by  
Dr. Frances Hurd

## The Churches Conservation Trust in Hampshire



© J. CROFT 2011

At  
Colonel Jenkin's  
Memorial Hall  
Wherwell SP11 7JJ  
Friday 16th October  
at 8.00pm  
All Welcome  
Admission £3.00  
Tea/Coffee/Biscuits  
available

## Chilbolton Flower Show 2009

Who would have thought that a scaffolding tower could come in so useful? Decked out with jumpers for Zimbabwe it became a thing of beauty. Seventy (yes, seventy!) brightly coloured garments which had been knitted as a result of our joint WI/Flower Show appeal were hung up to be admired. Fund-raising will now be needed to raise the money to post them off. We would like to say a big thank-you to all those who contributed.

Around the country, flower shows are becoming a thing of the past, but not so in Chilbolton. The busy Hall was testament to continuing interest. There are no cash prizes, but our coloured cards are much-prized.

Despite strong winds the previous two days which played havoc with flowers, entries were still of a high standard. The cups for Fruit and Vegetables and for Flowers were won by Jennie Ewer. Unsurprisingly, she also carried off the Parish Council Cup for the most points in the show, having achieved a staggering seventy-one points.

The Photographic Section proved very popular and will probably be extended next year. The standard of photography was high, particularly the beautiful winter shots which brought back memories. Carole Marits won the Prevett Award for Craft.

The Cookery Section was smaller than before but the standard high: Sue Batchelor won the WI Plate.

There was intense rivalry in the Floral Art, with Maggie Duffy narrowly beating Noreen Colvin for the Marc Dale Cup.

The Junior Section turned out to be a family affair, with Poppy Williams winning the Atkinson Trophy and Molly and Jacob Williams sharing the Bellis Cup.

Sue Batchelor and Maggie Duffy were delighted to receive commemorative engraved vases to mark their continuing involvement in the Flower Show since its inception in 1984.



*Jennie Ewer receiving the Parish Council Cup for the most points in the show.*



## The History of Chilbolton Flower Show

Chilbolton Flower Show was started in 1984 in response to a national WI directive to 'Start a new venture in your locality'. WI members, Sue Batchelor and Maggie Duffy, had both grown up with Flower Shows and were keen to get one going in Chilbolton.

WI fundraising took place to get it started. They advertised the idea locally and were joined on the committee by David Waghorn, Jean Henderson and Betty and John Dale. Betty and John had grown and shown Fuchsias for years and knew exactly what needed to be done.

The idea was to hold a Flower Show with some crafts exhibited as well. David came up with the idea of a full-scale Craft Exhibition, to run concurrently with the Show, which he would organise, and Richard and Tessa Youell kindly agreed to loan Bannuts Barn for this.

The Show, with a limited number of classes, was a success. Visitors were able to walk to and fro between the Show in the old Village Hall and the Crafts in the Barn. A board was put up, asking for the names of those interested in joining a Horticultural Society, and the number warranted its inauguration the following year.

In those days Hampshire County Council ran a Village Ventures competition. Maggie and Sue were encouraged to enter and were delighted to be 'Highly Commended', especially as this included a cash prize to swell the Show coffers.

The Show has run every year bar one (when ill-health on the part of two committee members forced its cancellation), so the 2009 Show was its 25th.

*Sue Batchelor*



**Note : We did not have room in this month's magazine to print the full list of Chilbolton Flower Show 2009 winners. If you want a copy of the list, please contact Sue Batchelor on 860307.**

Chilbolton WI had an excellent September meeting. Our speaker was a charismatic lady, Jayne Lewis, who spoke on the unlikely topic of creative embroidery using many unusual materials such as bubble wrap, sweet wrappers and nappy liners. Unpromising you might think, but her work was highly original, practical and absolutely beautiful. She belongs to the Winchester Embroiders Guild and we look forward to seeing her work again at their exhibition in October in the Winchester Discovery Centre.

Our WI knitting Jumpers for Zimbabwe appeal caught the imagination and we have received over 80 colourful jumpers from members, friends and family from Chilbolton, Wherwell, Southend, Chipping Norton and Andover.



Stuart Pocock from Pocock's Roses will join us next month, Tuesday 20th October 7.30 in Chilbolton Village Hall (Stuart's talk at 8pm). Visitors, male and female will be welcome (£3).

Our programme of the year's events is always in the Village Hall. If you are interested in finding out more about us or coming along at any time please either just turn up or contact our President, Sally Griffiths (860313) or me (860571).

*Sue Keen,*  
*Secretary Chilbolton WI*

## Test Valley Decorative and Fine Arts Society (TVDFAS)

Passionate about Art and Culture? Enjoy the Arts with like-minded people. The Test Valley DFAS arranges first class lectures; subjects include Old Masters, Ceramics, Furniture Design, Jewellery, Silverwork, Architecture and Contemporary Art. Visits are also arranged to Museums, Galleries and Historic Houses.

The Society meets in the Weyhill Fairground Hall on the first Tuesday of the month at 10.30am for morning members, and 2.15pm for afternoon members.

The next lecture is on Tuesday, 6<sup>th</sup> October, 'Chateaux and Gardens of the Bordeaux Region' by Helen McCabe BA(Hons), author, art and architectural historian.

If you wish to come along on 6<sup>th</sup> October as a guest, and for more information please contact Julie Lloyd (Tel: 01264 860686)



## Dates for your diary

<b>October</b>		
2nd	Film <i>'The Young Victoria'</i> - Chilbolton VH	6.45 for 7.30pm
3rd	Wherwell Coffee Morning – Wherwell VH	11 00 am
3rd	Elizabethan Madrigal Singers - Wherwell Church	7.30 pm
4th	Harvest Festival Service - Wherwell Church	10.00 am
4th	Harvest Lunch – WVH	12 for 12.30 pm
5th	Red Garter – CVH	7 30pm
6th	Horticultural Soc meeting - CVH	7.45 pm
6th	Chilbolton PC - CVH	8.00 pm
16th	Hampshire Churches – WVH	8.00 pm
16th	Wherwell History Group – ‘Hampshire Churches’	
17th	Concert - Wherwell Church	7.30 pm
19th	Midday Mums bring & share lunch - WVH	12.30 pm
20th	WI meeting – CVH	
23rd	Village Quiz - CVH	7 for 7.30 pm
27th	Wherwell Wives Group - WVH	8.00 pm
28 <sup>th</sup>	Magazine collation – CVH	6.30 pm
<b>November</b>		
2nd	Red Garter – CVH	7.30 pm
3rd	Horticultural Soc meeting - CVH	8.00 pm
5th	Wherwell PC – WVH	7.30 pm
6th	Film <i>'Morris: A Life With Bells On'</i> - CVH	6.45 for 7.30pm
7th	Wherwell Coffee Morning - WVH	11.00 am
9th	AGM CVH Management Committee - CVH	8.00 pm



### Notice board

Badminton in the Chilbolton Village Hall every Thursday at 8pm. All levels welcome. For further information contact Jill Lord, 860667.

Scrabble in Wherwell Village Hall every Friday at 2.15 for 2.30pm

## Chilbolton Horticultural Society



Tuesday October 6<sup>th</sup> 2009  
7.45pm Chilbolton Village Hall

### Herbal Lore & Legend

Sue Bowser, practising Commoner in the New Forest  
Visitors (£3) very welcome

## Wherwell Church Fundraising Events

Wherwell are having two forthcoming events which need support:

**On Sunday, 4th October** we will be holding our Harvest Festival Service in the Church at 10am and this will be followed by a Harvest Luncheon in the Col. Jenkins Memorial Hall, 12 noon for 12.30. Cost £5 per person, family ticket (two adults and two children) £15.

All are welcome to one or both of these events. Please let Malcolm Lloyd know if you wish to attend the luncheon:

Tel: 01264 353635 or e-mail: [wizardmal@hotmail.co.uk](mailto:wizardmal@hotmail.co.uk) I would appreciate notification by 2nd October please.

Produce will be auctioned on the day and any proceeds will be put to the Andover Food Bank. All tinned goods will also be donated to the same organisation.

**On Saturday, 17th October, at 7.30pm** in the Church, there is to be a concert given by Choirs of Downs Benefice, including Wherwell Singers. This Concert will also feature Lydia Morrell playing the harp.

Tickets will be £5 and family Ticket £15, available on the door. Drinks and refreshments will also be available at a modest cost.

These should be entertaining events and hopefully give much enjoyment to those who attend and at the same time raise money towards the Church.

Looking forward to seeing you there. *Malcolm Lloyd, Churchwarden*

## Notice from Reverend Juliet Montague

## Wherwell graveyard

As many of the residents of Wherwell are probably aware, we are running out of burial spaces in the churchyard. The law allows us to re-use spaces after 100 years, but I and the PCC propose to go further back than that. The section we wish to use is to the left of the path as you approach the church porch from the lych-gate, and stretches from the end of the William Henry Iremonger mausoleum to the gate in the Priory wall, excluding the mausoleum, the grave of William Henry Iremonger (1911&1945), the double grave of Colonel and Mrs Jenkins (1945 & 1959), and the large cross of Lewis Payne (1881).

We believe that some of the stones are not in their original position because they are abnormally close together. The likelihood is that they were moved when the new church was built.

Diocesan regulations require that we re-site any of the stones that are of architectural interest, or bear readable inscriptions. We propose to do this on the other side of the path where a convenient space is available.

The regulations also require us to make reasonable efforts to trace any surviving relatives of those named on the gravestones. To this end, if any of you have information about any of the families of the following, would you please contact the Vicar (01962 880845) or a churchwarden: Anna Lipa (01264 860879) or Malcolm Lloyd (01264 353635)

<i><b>Name &amp; date on Headstones as they can be read</b></i>	
John & Elizabeth Stare. 1815 & 1825	Mary Moody. 1759
Ann Noyes. 19/05/1825	William Moody. 1763
James Blake. 1782	Thomas & Elizabeth Friend. 1748 & 1739
Jane Blake. 1781	?. 1750
Thomas Banting. 1802 – son of Charles & Elizabeth	Mary Asquith. 1782
?? Brooke. 1791 & 1789	John Asquith. 1791 (75 years old)
William ?. 1701	William son of & Hannah Matthews. 1770 & 1771
Benjamin & Kittura Stanbrook. 1806 & 1807	Jenkins 1945 & 1959 – to remain
Richard Stanbrook. 1817	Mary Stanbroke. 1765
unknown.	Unknown
TS & HS ?. 1813	John Canteloe 1782
RS ?. 1847	Elizabeth Goater . 1777
Charles Banting. 1771	Thomas Reeves. 1740



# HARVEST FESTIVAL LUNCH

in the  
Colonel Jenkins Memorial Hall  
Sunday 4 October 2009  
12 noon for 12.30 p.m.

Tickets £5

from Anna Lipa 860879 or  
anna@stefanlipa.co.uk  
Malcolm Lloyd 353635 or  
wizard@hotmail.co.uk



# Harvest Festival Service 10.00 a.m. in St Peter & Holy Cross Church



## **Chilbolton & Wherwell Wildlife**

Over the past few weeks, several of you have commented on again seeing Red Kites over our villages. Years ago, we used to see Red Kites only in central Wales, but since the introduction of the species to the Chilterns twenty years ago, they've gradually increased in numbers and spread in Southern England. This year there were at least ten pairs nesting in north-west Hampshire, some of them not very far away from us. In the spring, sightings over Chilbolton and Wherwell may have been of these nesting birds as they hunted for food, but the more recent sightings are more likely of young birds as they disperse and look for suitable territories.

If you have binoculars, it's worth taking a good look at any Red Kite that you see. Apart from being wonderful to watch their elegance and superb agility in the air, many carry coloured wing-tags that can tell us about their movements. Nine of this year's Hampshire chicks were fitted with wing tags, so there's a very good chance of seeing one with tags. Let me know if you do, but be sure to accurately record which colour is on the bird's right wing, and which on the left wing.

Another quite different kind of colour-marking is taking place this September. Migrant moths at coastal locations, are being adorned with small spots of extra colour on their wings. Then on National Moth Night (18-19th September), and during the following week or so, moth enthusiasts throughout the country will be examining all the moths that are caught in their light-traps, and looking out for any that carry the coloured spots. It's the first time this has been done on a national scale, and hopefully some of the marked moths will be found again. This will provide a lot more knowledge about the direction and

speed of movement of moth migration. I shall of course be running my moth-traps in and around Chilbolton, and next month I'll let you know whether I find any of the colour-marked moths.

*Glynne Evans (hantsbto@hotmail.com)*

## WHAT'S ON IN THE AREA

### Theatres:

01/10/09 to 24/10/09: **After Miss Julie.** A version of Strindberg's Miss Julie by Patrick Marber. Performances at 7.30pm (Mon-Wed), 2.30pm & 8pm (Thu & Sat, no matinees on 01/10 & 03/10), 8pm (Fri) at Salisbury Playhouse. Tickets £12-£19. Tel (01722) 320333 [www.salisburyplayhouse.com](http://www.salisburyplayhouse.com)

08/10/09 to 10/10/09: **Alan Bennett's Talking Heads.** Presented by RAODS at Plaza Theatre, Romsey at 7.30pm. Tickets £6. Tel (01794) 512987 [www.plazatheatre.com](http://www.plazatheatre.com)

13/10/09 & 14/10/09: **Shakespeare Schools Festival.** Four local schools stage four different half hour plays at Theatre Royal, Winchester at 7pm. Tickets £5.50-£7.50. Tel (01962) 840840 [www.theatre-royal-winchester.co.uk](http://www.theatre-royal-winchester.co.uk)

27/10/09 to 31/10/09: **Mort.** By Terry Pratchett. Presented by RAODS at Plaza Theatre, Romsey at 7.30pm. Tickets £9. Details above.

### Music:

10/10/09: **Ralph McTell.** At Theatre Royal, Winchester at 8pm. Tickets £17.50 (concessions £15.50). Details above.

12/10/09: **Georgie Fame & Sons.** At The Lights, Andover at 7.30pm. Tickets £17.50-£18.50. Tel (01264) 368368 [www.thelights.org.uk](http://www.thelights.org.uk)

22/10/09: **Andover Music Club –Britannic Ensemble, Flute, Oboe, Piano.** At 7.30pm at The Lights, Andover. Tickets £10. Details above.

### Other events:

03/10/09 & 04/10/09: **Hampshire Harvest Weekend.** In the Outer Close, Winchester Cathedral from 10am to 5pm. See [www.hampshirefare.co.uk](http://www.hampshirefare.co.uk)

09/10/09 to 11/10/09: **Winchester Film Festival** at various locations across the city. For more details see [www.winchesterfilmfest.com](http://www.winchesterfilmfest.com)

30/10/09: **Hallowe'en Party.** At Hillier Gardens, near Romsey 5.30-8pm. Dress up, bring a torch and carved pumpkin for fun and frights with Forest Forge Youth Theatre. Suitable for under 10s. Book before 16 Oct £6 each, from 16 Oct £8 each. Tel (01794) 369318 [www.hilliergardens.org.uk](http://www.hilliergardens.org.uk)

### Country Markets:

Country Markets are held weekly in Andover and Stockbridge selling homemade and local produce. The Stockbridge market is held in the Town Hall every Thursday, 10.00am - 12.00 noon. The Andover market is held by the Guildhall and in Rendezvous, Union St. every Friday, 8.00am - 12.15pm

### Farmers' Market Dates:

04 Oct 2009 – Romsey

11 Oct 2009 – Winchester

18 Oct 2009 – Andover

25 Oct 2009 – Winchester

For more information, please ring (01420) 588671, or visit the website at [www.hampshirefarmersmarkets.co.uk](http://www.hampshirefarmersmarkets.co.uk).



## Jane's Kitchen

As I write this, my first 'trial' of the carrot cake, which I'm entering in the Horticulture Show, is in the oven. By the time you read this, we will know who made the best one. The show is one of the highlights of the village 'year' and creates a buzz of friendly rivalry among the residents. It also means the end of summer and the beginning of the time of 'mellow fruitfulness' – or rather time to get the preserving pan out and use up all the excess produce there is around at this time of year.

I have mentioned before that I have quite a collection of recipe books but nowhere can I find a recipe for 'beetroot and ginger chutney'. Please has anyone got one to pass on? I would love to have it as I tasted some of this delicious and quite piquant chutney recently.

I have got a bit carried away with this – my cake is rather too brown around the edges – have to have another go!

Hope your entry was a winner.

*Jane*

### District and County Councillors

Wherwell: Cllr Jim Neal

01264 720429

[cllrjneal@testvalley.gov](mailto:cllrjneal@testvalley.gov)

Chilbolton: Cllr Peter Boulton

01794 301212

[CllrPBoulton@testvalley.gov.uk](mailto:CllrPBoulton@testvalley.gov.uk)

County: Cllr Andrew Gibson

01264 861138

[andrew.gibson@hants.gov.uk](mailto:andrew.gibson@hants.gov.uk)



### MIDDAY MUMS.....

will be on Monday October 19th at 12.30 p.m. for a bring and share lunch in Wherwell village hall. Look forward to seeing you and your children then.

*Susan Ansell 860 775*





## Curtain up for the Chilbolton Stage

In 2002, Mr Tony Batteye, a long term and well respected member of the Chilbolton Players, died on stage in while performing in Wherwell. He kindly left £20,000 to the Village Hall Committee to be used for a stage which would be designed and constructed in liaison with the Chilbolton Players. From the start the project was not as easy as it had first appeared. The Rev. Errol Williams set the wheels in motion. Early assessments were for a large extension to the village hall. This and other alternatives were dismissed on cost grounds.

In June 2004 Winchester College conducted a feasibility study as a training exercise. One solution here was a suspended stage. However this option declined on Health and Safety grounds. The next major development in 2006 following a public meeting was the conception of a working party who freely gave their time and skills to progress this project. During the following year there were several changes in the working party. This included chairmanship passing to Mr Jim Dunne, a retired project engineer, who has maintained this role throughout the life of the project.

Their first consideration was also the extension route as this would benefit both the Chilbolton Players and the Village Hall generally. All users of the village hall were considered as the venue has a diverse clientele from playgroup to short mat bowls and Badminton as well as private hire (some seeking use of a stage and others not). The aim was to achieve as much as possible with as little disruption to the users of the facility as possible. However costs were looking to be in the range of £150-£200K. No option was left unexplored. A theatre architect was engaged to investigate six major ideas.

In August 2007 the final decision was made by the working party for a 5M wind up stage at the south east end as the best solution based on its operability, cost and acceptability to other hall users. When stored it would be vertical against the south east wall. A short set of stairs would be installed in the Durnford room to provide access to the stage. The solution was about to become a reality. Generous proportional grants were awarded by Hampshire County Council and Test Valley Borough Council under a previously existing scheme of grants.

In early 2008 the requests to tender were sent out for the main work to two professional stage companies and two local companies with selection based on design concept and cost effectiveness. In May 2008 a local provider LTL of Stonefield Park was awarded the contract. Further quotations were then sought for the building and electrical works. Work began in earnest. It was not as simple as just getting access and getting on with the job till it was finished. Work sessions were scheduled around the playgroup and other daytime users of the village hall.

By August 2009, the stage was functional. Carpets and curtains (purchased by the Village Hall Committee with a substantial donation from the Chilbolton Players) were ordered, but there was still more work to do to enable the stage to be automatically lifted. This was scheduled to be completed in September.

I can't end this piece without thanks to Jim Dunne, without whom the Chilbolton Players would not be able to use such a unique and effective stage. *(cont)*

*(Continued from page 31)*

He thought he had retired from project management yet he led the program thorough all of its challenges, had the sleepless nights and dealt with the issues as they arose. And also to Mary Dunne who has put up with Jim throughout this lengthy process.

This has been the realisation of a legacy and has only been achieved through the dedication and tenacity of our village team. What an achievement for a village community, thank you and well done to all involved over the last 7 years. If you have not seen the stage down already, then put a date in your diary for the February pantomime production by the Chilbolton payers on 18<sup>th</sup> – 20<sup>th</sup> February 2010.

*Carole Marits*

### **A note from Jim Dunne, Chairman of Stage Working Party**

I would like to thank my fellow working party members for giving up their valuable time in to bring Tony Batteye legacy to conclusion. They include Wendy Andrews, Brian Fakes, Pam and Chris Mason, Nigel Munns, Terry Gilmore, Alan Crisp and Tony Bliss. If the legacy had not been forthcoming nothing would have happened. After five years of effort we may have delivered something which is far better than originally envisaged. I am sure Tony will feel we have used his legacy wisely.



### **Kilimanjaro Hiking Challenge**

My name is Amy Bennett and I grew up in the villages of Chilbolton and Wherwell, attending Wherwell School and Test Valley School in Stockbridge. The current economic climate has surely affected all of us in some way, and charities have been particularly hit as people have had less facility to make donations. Because of this, Macmillan Cancer Support have teamed up with my employers, Capita Group, and issued Capita employees with the Kilimanjaro Hiking Challenge. I will be one of only three people locally (at nineteen, I think I'm the youngest) attempting to hike up Mount Kilimanjaro over a period of eleven days in January 2010.

Those of you who know me well will also know that I'm a bit of a 'girlie' girl, so this is an enormous personal challenge for me, but one that I'm determined to embrace. My training for the climb is being organised and monitored by Energie Fitness in Andover. My employers, Capita, have agreed to pay for my return flight to Tanzania. Now I need to ask for your help in sponsoring me, so that I can raise as much money as possible for Macmillan Cancer Support. Whether you are a local business or a private individual, I'd really appreciate any sponsorship contribution you may be able to make, no matter how small.

Cheques made payable to 'Kilimanjaro Hiking Challenge', can be sent to me c/o 5 Chapel Court, Wherwell, Andover, SP11 7JQ. Alternatively, you can contribute online at [www.justgiving.com/capitakilimanjarotrek](http://www.justgiving.com/capitakilimanjarotrek) - just click on 'donate now' and write 'sponsorship for Amy Bennett' in the comments box. I will, of course, update you as to how much money I managed to raise at the end of the challenge.

*Amy Bennett*



## Bee Diary October 2009



As the days shorten, the honeybee colony adopts its winter mode of operation. In mid summer, worker bees live for about six short and hectic weeks, being literally worked to death foraging for honey. Worker bees that are hatched in October are likely to live up to six months. Their main task will be to huddle together, shivering somewhat, in order to keep the brood nest at a constant 33 degrees centigrade. On sunny days, they may venture forth from the hive to collect water or to dirty the neighbour's washing, but most of the time they will be confined in the winter cluster. By now all the hives should be crammed full of winter stores, honey and pollen and every hive should weigh at least 40lbs and preferably more.

For the beekeeper, the outdoor work is mostly done by the start of October; he can do the equipment repairs inside. Before leaving the bees, mouse guards are fixed to the entrance of each hive to prevent mice from entering. In summer a mouse would be stung to death in seconds if it entered a hive, but in winter they can get in and make a huge mess without being attacked by the bees.

Of great concern this year has been the number of queen bees that have hatched, been mated, started laying and then within a month or two have been considered inadequate by the bees in the hive. This results in new queen cells being constructed and new queens raised. The likely cause of this is poor mating with the drones, the male bees in the hive. It could be that varroa mites have weakened the potency of the drones, or possibly that agricultural pesticides have harmed the drones or the queen. If all goes well, new replacement queens will get mated and supersede the defective queen, but if the new queens are raised too late in the year, there are few drones around to mate with them. This could be one of the reasons for the large number of colony losses over the winter. New scientific research into bee losses will hopefully solve this crucial problem of early queen supersedure.

By October the beekeeper should have done everything he can to prepare the bees for winter. The hives should be heavy with stores, the number of varroa mites within them should have been minimised with integrated pest management through the summer. The hives should be in a sheltered spot, out of the prevailing wind. There is little more the beekeeper can do, but hope and pray they will come through the winter. Between 1992 and 2006 we lost virtually no colonies over winter, but in the last two years the losses have increased significantly.

*Jolyon Pope*



## **Chilbolton Football Club begin the new season with a draw**

Sunday, 13 September 2009

Chilbolton FC 2 – Wallop Wanderers Res 2

Chilbolton goal scorers – Robert Floyd (1), Oliver Southworth (1)

Chilbolton got their season started with a well deserved 2-2 draw at home to Wallop Wanderers Res. Wallop took the lead early on through a defensive error but Chilbolton equalised shortly after through Robbie Floyd. Wallop took the lead again when ex Chilbolton player Micky Clark set up one of his team mates but the veteran striker had little impact on the game due to the tight marking of defender Simon Gibson. The second half saw both sides have attempts on goal but it was Oliver Southworth who equalised for the home side late on. This was a solid start for Chilbolton and with several players coming back from injury, the season looks promising.

Training is continuing at the Playing Fields at 06.00pm each Thursday evening while the light lasts when we will move to Test Valley School where we are able to hire the gym for an hour each week. This year we are selling coffee, tea and cake's at home matches. We will arrange a few tables and we hope to see more villagers enjoying the relaxed atmosphere of home fixtures.

*For further information on the Football Club and match date's the website is [www.chilboltonfc.co.uk](http://www.chilboltonfc.co.uk) If you feel that you would like to know more about the team or details of the training sessions please contact Andrew on 01264 861138*

## **Longparish Second Sunday of the Month 5Km runs**

Chilbolton is providing an increasing number of athletes for the monthly runs in Longparish. This month our own Andy Hawke won the race in a time of 19mins 05 secs which is a really fast time by any standards over the 3.1mile course.

Last month Sue Sheath won the Women's race for the second time and has made dramatic improvements in her time going from beginner to top performer in a matter of months.

It is a really good way to start off your Sunday and refreshments are available at the finish after a run through some really pleasant countryside.

## **Mobile Library**

Wherwell & Chilbolton are on the same route and the library calls FORTNIGHTLY on a THURSDAY. It is at the White Lion, Wherwell from 11.15am to 11.45am and moves on to Chilbolton Village Hall from 12noon to 12.45pm and then to Bannuts Farm (assume 'Barn') from 2.10pm to 2.30pm.

## **Mobile Police Office & Beat Surgery**

Chilbolton – 2nd Monday of each month, in Village Street, from 1pm.  
Wherwell – 4<sup>th</sup> Tuesday of each month in Home Guard Car Park from  
12 noon



## **Community Policing**

Although I am continuing to operate the mobile police office, because of staff shortages, I am required to conduct more crime enquiries etc., which take precedence over the mobile unit. For the whole of November 2009, I will be temporarily transferred to Andover, and so as far as I know, the unit will not be in operation for that period.

Otherwise, my visits to your village will be sporadic, although I will do my best to attend on the scheduled days.

My monthly visits to Wherwell should be on the 4th Tuesday of each month, 10:00-12:00 hours.

Apologies for any confusion caused, if you know of anyone who wishes to see me, please send me their details and I will make arrangements to visit them.

*John Viney*